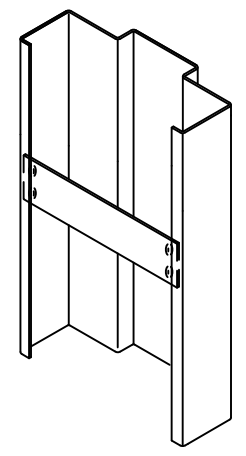
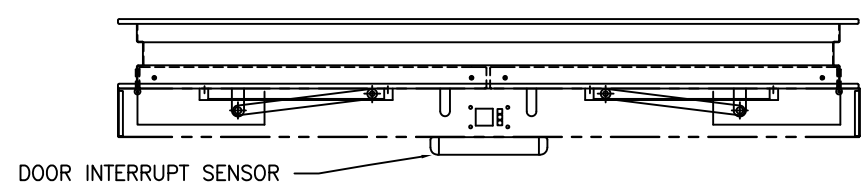


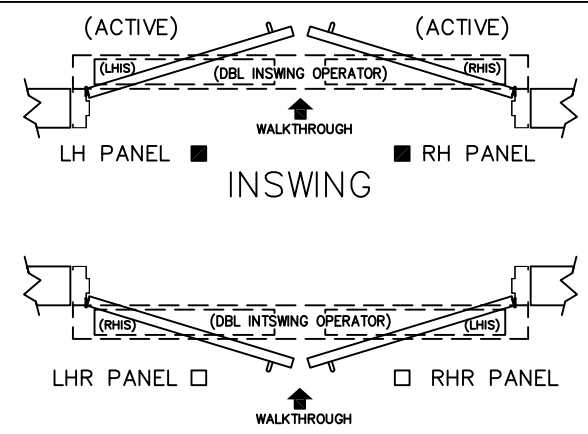
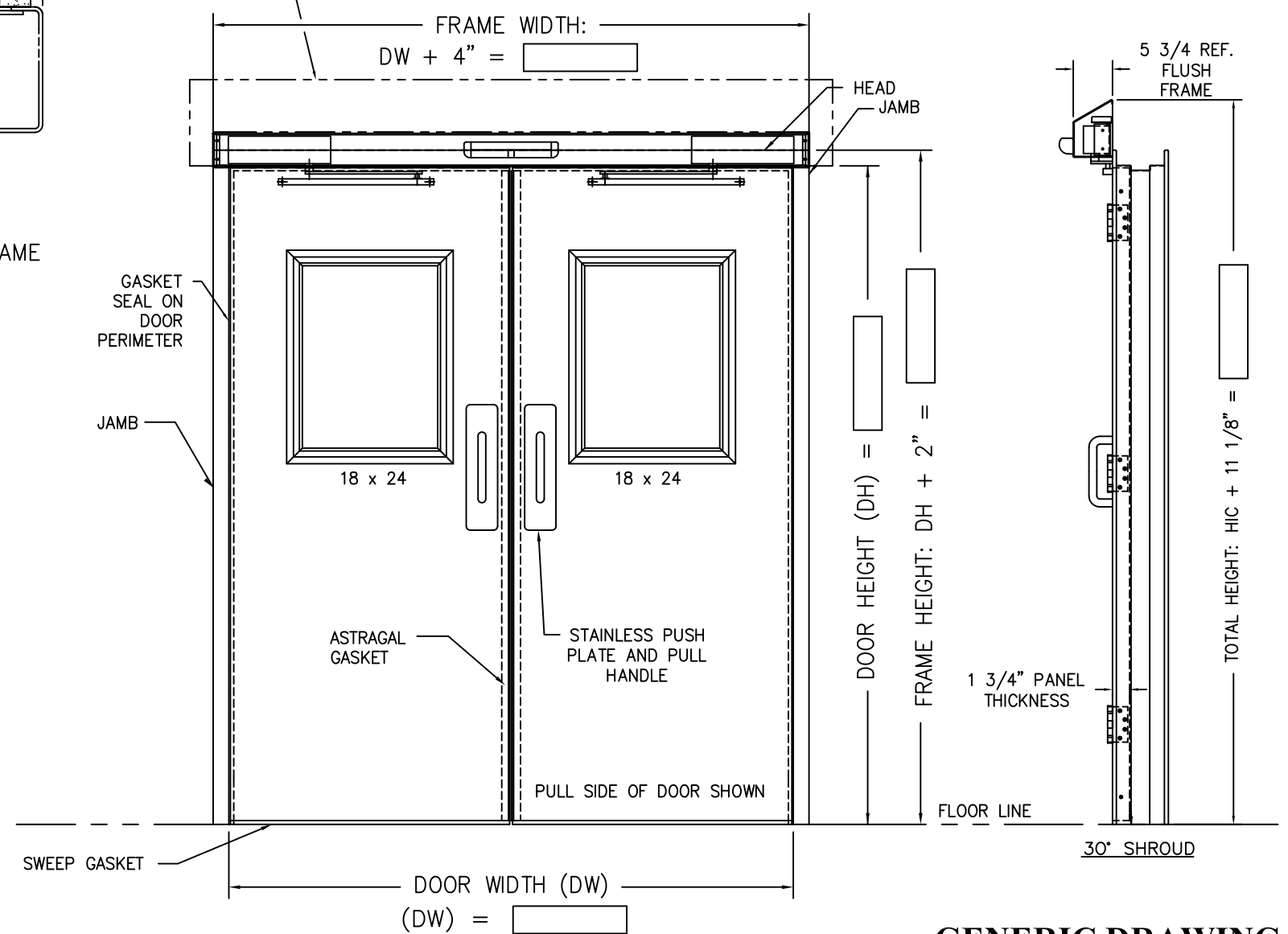
JAMB PROFILE, SLIDE-IN S/S FRAME



- WELDED STRAPS TO BACKBENDS OF
- STAINLESS STEEL FRAME
- NEW STEEL STUD AND DRYWALL,



NOTE: WALL MUST BE REINFORCED. OPERATOR IS MOUNTED DIRECTLY TO WALL. 7 GA PLATE, 8" HIGH STARTING AT TOP OF ROUGH OPENING EXTENDING TO (1) STUD PAST EACH SIDE OF FRAME. MIN. REQUIREMENT, BY CUSTOMER.



GENERIC DRAWING

- OPTIONS**
- Y
E
N
S
O
- □ MOLDED FIBERGLASS PANEL: ■ WHITE (STD) □ OTHER _____
 - ■ 16GA. 304 #4 STAINLESS STEEL PANEL
 - □ 20GA. 304 #4 SS CAPPING □ 20GA. 316L #4 SS CAPPING
 - □ 16 GA. 304 #4 STAINLESS STEEL DOOR FRAME
 - WELDED □ KNOCKDOWN
 - □ ANCHOR STYLE - WELDED STRAPS
 - NEW STEEL STUD WALL
 - NEW MASONRY WALL
 - EXISTING
 - ■ 45° HOSPITAL STOP:
 - 4" HIGH □ 6" HIGH
 - □ WINDOW (18" x 24") 1/4" CLEAR TEMPERED GLASS WITH SLOPED 304 #4 STAINLESS STEEL VISION FRAME KIT
 - ■ WINDOW (_____) FLUSH CLEAR TEMPERED GLASS
 - □ PULL SIDE KICKPLATE, HEIGHT: _____ 304 #4 STAINLESS STEEL
 - □ PUSH SIDE KICKPLATE, HEIGHT: _____ 304 #4 STAINLESS STEEL
 - □ HINGES
 - 6 HINGES (DH < 90") □ 8 HINGES (DH >= 90")
 - □ SHROUD □ 0" ■ 30" □ 45"

VOLTAGE 115 VAC, SINGLE PHASE
ANY AND ALL NECESSARY WIRING TO BE SUPPLIED BY OTHERS

- STANDARD & LOOSE PARTS ITEMS**
- * PROVIDE (1) N35-B100 TYPE DBL OPERATOR
 - * PROVIDE 304 #4 STAINLESS STEEL SLOPED SHROUD
 - * PROVIDE (1) ACUSENSOR 3 MOTION SENSOR
 - * PROVIDE (2) PUSHPLATE (23A227), LOOSE, STANDARD (X042)

SPECIAL NOTES

TAG DOOR AS: ***ADVISE***

NOTES:

***** **ADVISE** *****

- * SWING: RH, LH (SHOWN), OR RHR, LHR
- * OPERATOR: INSWING (SHOWN) OR OUTSWING
- * WALL THICKNESS:
- * WALL CONSTRUCTION:
- * FRAME STYLE: WELDED (SHOWN) OR KNOCKDOWN
- * ANCHOR STYLE:
- * JAMB PROFILE: SLIDE IN/FLUSH (SHOWN) OR A WRAPPING WALL

CLEANSEAL[®]

Controlled Environment Door Systems

ASI Doors, Inc.
5848 North 95th Court
Milwaukee, WI 53225
1-800-558-7068
www.asidoors.com

APPROVALS

FABRICATION CAN PROCEED ACCORDING TO THE SPECIFICATION SHOWN EXCEPT AS NOTED.

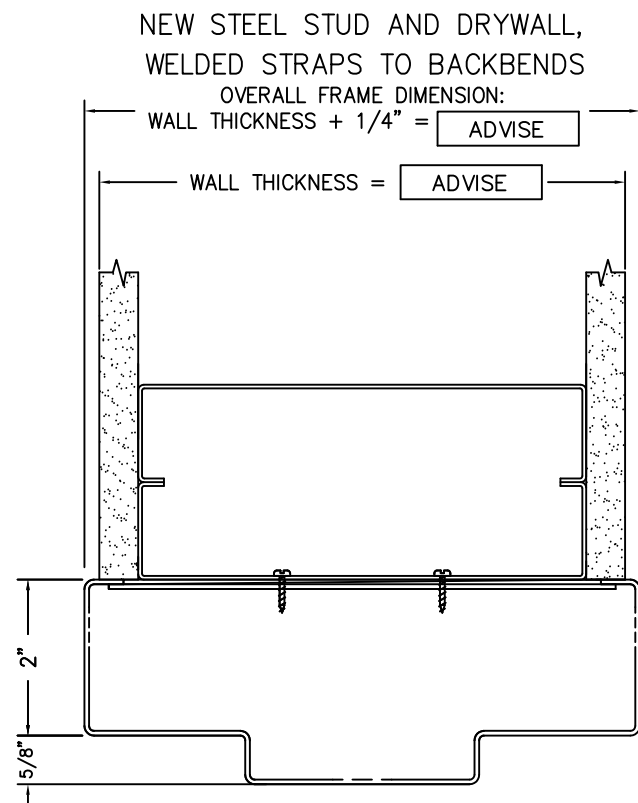
BY _____ DATE _____

ASI JOB NUMBER:
CUSTOMER ORDER NUMBER:
SOLD TO:
SHIP TO:

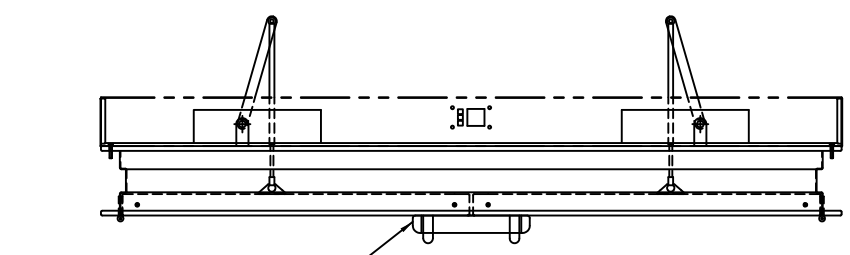
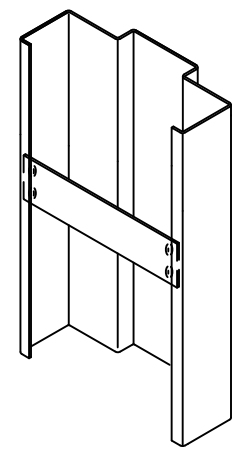
QUANTITY OF DOORS:
QUANTITY OF PRINTS: 1
DOOR ASSEMBLY NO: 235
ELECTRICAL DRAWING NO: -

TITLE 235 POWER PAIR OF SWING DOORS

DRAWN BY	DATE	SHEET 1 OF	DRAWING NO. 235RHI	REV.
----------	------	---------------	-----------------------	------

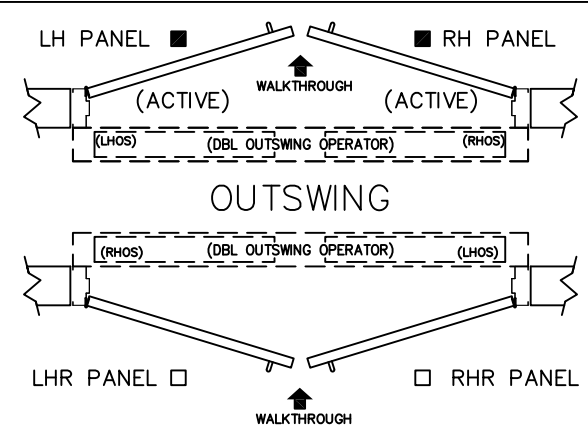
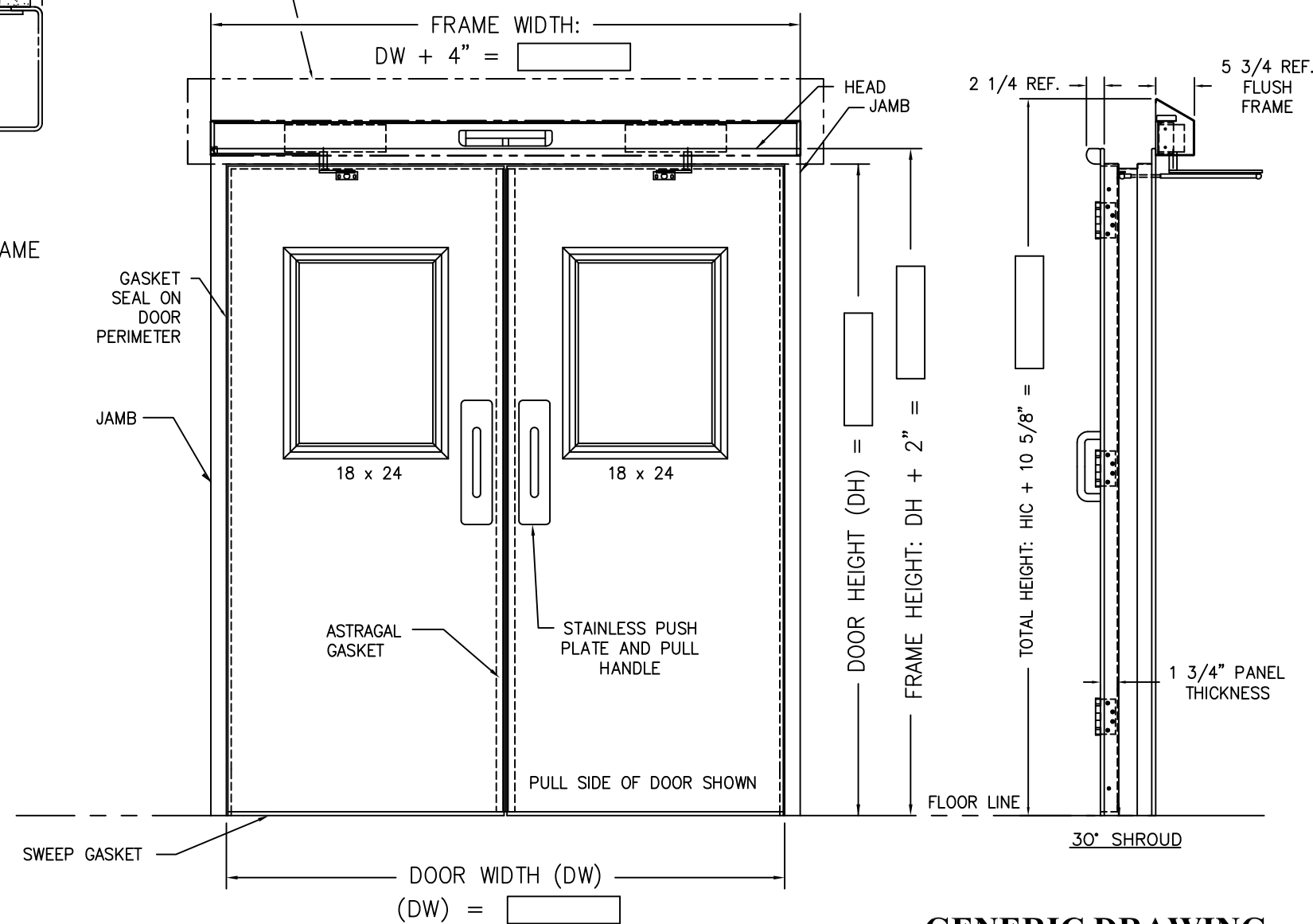


JAMB PROFILE, SLIDE-IN S/S FRAME



DOOR INTERRUPT SENSOR

NOTE: WALL MUST BE REINFORCED. OPERATOR IS MOUNTED DIRECTLY TO WALL. 7 GA PLATE, 8" HIGH STARTING AT TOP OF ROUGH OPENING EXTENDING TO (1) STUD PAST EACH SIDE OF FRAME. MIN. REQUIREMENT, BY CUSTOMER.



GENERIC DRAWING

- Y E N S O**
- OPTIONS**
- MOLDED FIBERGLASS PANEL: WHITE (STD) OTHER _____
 - 16GA. 304 #4 STAINLESS STEEL PANEL
 - 20GA. 304 #4 SS CAPPING 20GA. 316L #4 SS CAPPING
 - 16 GA. 304 #4 STAINLESS STEEL DOOR FRAME
 - WELDED KNOCKDOWN
 - ANCHOR STYLE - WELDED STRAPS
 - NEW STEEL STUD WALL
 - NEW MASONRY WALL
 - EXISTING
 - 45° HOSPITAL STOP:
 - 4" HIGH 6" HIGH
 - WINDOW (18" x 24") 1/4" CLEAR TEMPERED GLASS WITH SLOPED 304 #4 STAINLESS STEEL VISION FRAME KIT
 - WINDOW (_____) FLUSH CLEAR TEMPERED GLASS
 - PULL SIDE KICKPLATE, HEIGHT: _____ 304 #4 STAINLESS STEEL
 - PUSH SIDE KICKPLATE, HEIGHT: _____ 304 #4 STAINLESS STEEL
 - HINGES
 - 6 HINGES (DH < 90") 8 HINGES (DH >= 90")
 - SHROUD 0° 30° 45°

VOLTAGE 115 VAC, SINGLE PHASE
ANY AND ALL NECESSARY WIRING TO BE SUPPLIED BY OTHERS

- STANDARD & LOOSE PARTS ITEMS**
- * PROVIDE (1) N35-B100 TYPE DBL OPERATOR
 - * PROVIDE 304 #4 STAINLESS STEEL SLOPED SHROUD
 - * PROVIDE (1) ACUSENSOR 3 MOTION SENSOR
 - * PROVIDE (2) PUSHPLATE (23A227), LOOSE, STANDARD (X042)

SPECIAL NOTES

TAG DOOR AS: *****ADVISE*****

NOTES:

******* ADVISE *******

- * SWING: RH, LH (SHOWN), OR RHR, LHR
- * OPERATOR: OUTSWING (SHOWN) OR INSWING
- * WALL THICKNESS:
- * WALL CONSTRUCTION:
- * FRAME STYLE: WELDED (SHOWN) OR KNOCKDOWN
- * ANCHOR STYLE:
- * JAMB PROFILE: SLIDE IN/FLUSH (SHOWN) OR A WRAPPING WALL

CLEANSEAL® ASI Doors, Inc.
5848 North 95th Court
Milwaukee, WI 53225
1-800-558-7068
www.asidoors.com

APPROVALS
FABRICATION CAN PROCEED ACCORDING TO THE SPECIFICATION SHOWN EXCEPT AS NOTED.

BY _____ DATE _____

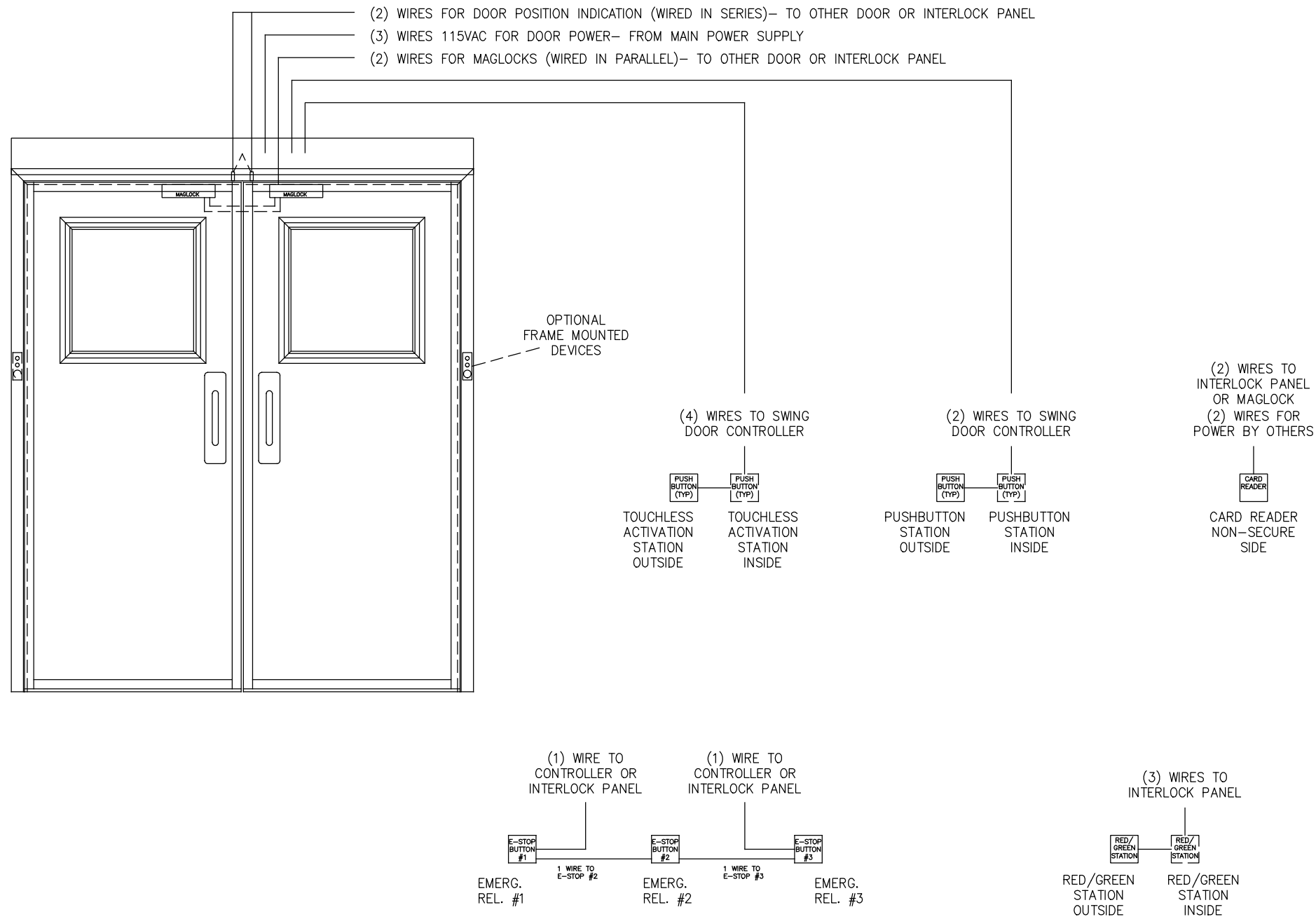
ASI JOB NUMBER:
CUSTOMER ORDER NUMBER:
SOLD TO:
SHIP TO:

QUANTITY OF DOORS:
QUANTITY OF PRINTS: 1
DOOR ASSEMBLY NO: 235
ELECTRICAL DRAWING NO: -

TITLE 235 POWER PAIR OF SWING DOORS

DRAWN BY	DATE	SHEET 1 OF	DRAWING NO. 235RHO	REV.
----------	------	------------	--------------------	------

PROVIDE SPARE WIRES FROM EACH DEVICE TO CONTROLLER OR INTERLOCK PANEL



E-STOPS WIRED IN SERIES- ANY BUTTON DISABLES DOOR AND/OR INTERLOCK
 * ADDITIONAL BUTTONS A/R, WIRED IN SERIES

- Y
E
S
O
- OPTIONS
- DOOR POSITION RELAY IN HEADER
 - DOOR POSITION SWITCH IN DOOR/FRAME
 - ACTIVATION BUTTON, QTY:
 - TOUCHLESS ACTIVATION BUTTON, QTY:
 - CARD READER BY OTHERS
 - MAGNETIC LOCK, SURFACE MOUNT, 23A0453
 - MAGNETIC LOCK, WITH POS. SWITCH, SURFACE MOUNT, 23A105
 - MAGNETIC LOCK, WITH POS. SWITCH, CONCEALED MOUNT, 23A0377
 - CARD READER BY OTHERS
 - REQUEST TO EXIT BUTTON, QTY:
 - E-RELEASE, SINGLE GANG, 24A0073NN, QTY:
 - RED/GREEN STATION, SINGLE GANG, 23A0093NN20, QTY:
 - RED/GREEN/E-REL STATION, SINGLE GANG, 24A0069NN, QTY:
 - RED/GREEN STATION, FRAME MOUNTED 23A0097NN20, QTY:
 - R/G/E-REL STATION, FRAME MOUNTED, 24A0070NN, QTY:

SPECIAL NOTES

- * TYPICAL MANUAL SINGLE SWING DOOR DETAIL
- * ALL NECESSARY WIRING TO BE SUPPLIED BY OTHERS
- * DOORS ARE NORMALLY UNLOCKED, UNLESS SPECIFIED OTHERWISE
- * OPTIONAL DEVICES SHOWN FOR REFERENCE
- * MAGNETIC LOCK FAILS UNLOCKED
- * CONTROL WIRING TO BE LOW VOLTAGE, 18AWG
- * PROVIDE SPARE WIRES FROM EACH DEVICE TO CONTROL OR INTERLOCK PANEL
- * 115VAC REQUIRED FOR OPERATOR POWER

CLEANSEAL[®]
 Controlled Environment Door Systems

ASI Technologies, Inc.
 5848 North 95th Court
 Milwaukee, WI 53225
 1-800-558-7068
 www.asidoors.com

TITLE ELECTRICAL RISER DIAGRAM POWER PAIRED SWING DOOR				
DRAWN BY UEG	DATE 11-19-13	SHEET 1 OF 1	DRAWING NO. 235 PAIR	REV.

APPROVALS
 FABRICATION CAN PROCEED ACCORDING TO THE SPECIFICATION SHOWN EXCEPT AS NOTED.

BY _____ DATE _____

ASI JOB NUMBER:
 CUSTOMER ORDER NUMBER:
 SOLD TO:
 SHIP TO:

QUANTITY OF DOORS:
 QUANTITY OF PRINTS:
 DOOR ASSEMBLY NO:
 ELECTRICAL DRAWING NO: