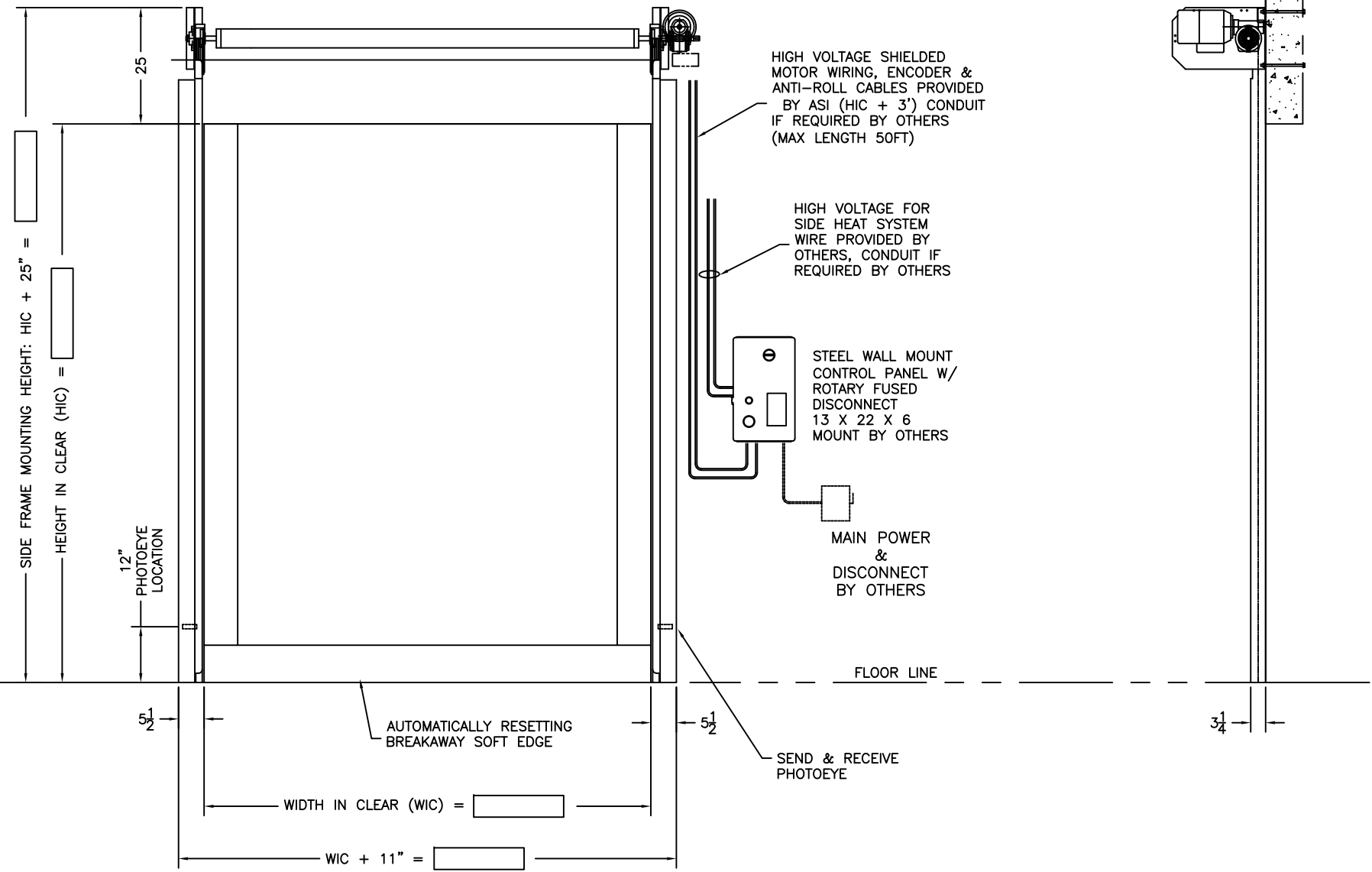
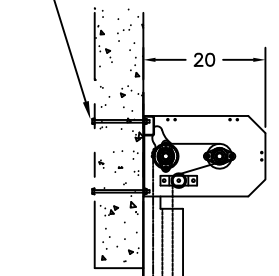


	SHROUD HEIGHT CLEAR = "A"	SHROUD PROJECTION CLEAR = "B"
HIC ≤ 16'0"	25 3/4"	22"
HIC > 16'0"	28"	25"

MOUNTING HARDWARE BY OTHERS (THRU BOLTS RECOMMENDED)



HIGH VOLTAGE SHIELDED MOTOR WIRING, ENCODER & ANTI-ROLL CABLES PROVIDED BY ASI (HIC + 3') CONDUIT IF REQUIRED BY OTHERS (MAX LENGTH 50FT)

HIGH VOLTAGE FOR SIDE HEAT SYSTEM WIRE PROVIDED BY OTHERS, CONDUIT IF REQUIRED BY OTHERS

STEEL WALL MOUNT CONTROL PANEL W/ ROTARY FUSED DISCONNECT 13 X 22 X 6 MOUNT BY OTHERS

MAIN POWER & DISCONNECT BY OTHERS

SEND & RECEIVE PHOTOEYE

AUTOMATICALLY RESETTING BREAKAWAY SOFT EDGE

MOTOR DATA
2 HP (1.5 KW)

VOLT/PHASE	RECOMMENDED SERVICE
460/3	15 AMPS
230/1	20 AMPS
208/1	20 AMPS

NOTE: 208 & 230 VAC CONTROLS ARE SET TO WORK WITH EITHER SINGLE PHASE OR 3 PHASE POWER INPUT.

NOTE: 460 VAC UNITS REQUIRE 277 VAC FOR HEAT. A DEDICATED NEUTRAL WILL BE REQUIRED

- OPTIONS**
- YES NO 208V 1Ø 60HZ 230 1Ø 60HZ
 - YES NO 460 3Ø 60 HZ (REQUIRES DEDICATED NEUTRAL, FOR HEAT)
 - YES NO MOTOR SIDE & BELT COVERS
 - YES NO SHROUD - OPEN TOP (HIC + 25-3/4")
 - YES NO 2-DOOR INTERLOCK OPTION (1-DOOR OPEN/1-DOOR CLOSED)
 - YES NO ADDITIONAL PHOTOEYES (ELEVATION _____)
 - YES NO EXTEND CABLES _____ LG (MAX LENGTH 50ft)
 - YES NO DOOR OPEN STATUS CONTACT
 - YES NO DOOR CLOSED STATUS CONTACT

- MOUNTING LOCATION TEMPERATURES**
MOUNT SIDE TEMP _____ °F NON-MOUNT SIDE TEMP _____ °F
- CONTROL ENCLOSURE (NEMA 4/12) MATERIAL:**
 GRAY PAINTED FINISH #304 S/S FINISH (OPTIONAL)
 MATERIAL CONSTRUCTION:
 GALVANIZED FINISH #304 S/S FINISH (OPTIONAL)
 CURTAIN COLOR: BLUE WHITE OTHER _____
 NON-INSULATED CURTAIN (STD) INSULATED CURTAIN
 YES NO PRE-ANNOUNCE TO CLOSE:
- SELECT COMPONENTS PER STACK (MAX 1-ALARM PER STACK)**
 LIGHTS: YELLOW (23A0458-2) _____ QTY. RED (23A0458-1) _____ QTY.
 ALARM MULTI-TONE (23A0459-1) GREEN (23A0458-3) _____ QTY.

- ACTIVATION DEVICES**
- (X100) PULL CORD, LOOSE (24C507F1)
 - (X101) PULL CORD, HEATED, LOOSE (24C507F2)
 - (X045) SINGLE BUTTON STATION, LOOSE (24B029F1)
 - (X047) OPEN/CLOSE W/E STOP STATION, LOOSE (24A001)
 - (X027) MOTION DETECTOR, 16' MAX, LOOSE (23A284)
 - (X008) LOOP DETECTOR, WIRED IN
 - (X008) LD, WIRE, & GROUT, 250', LOOSE (55B169F6)
 - (X081) 1-CHNL RADIO RECEIVER, WIRED IN (23A252)
 - (X082) 1-CHNL RADIO TRANSMITTER, LOOSE (23A253)
 - (X084) 2-CHNL RADIO TRANSMITTER, LOOSE (23A255)

SPECIAL NOTES

TAG DOOR AS: #

******* ADVISE *******

* OPERATOR LOCATION: RIGHT HAND (SHOWN) LEFT IS OPPOSITE
 * VOLTAGE: 208, OR 230 SINGLE PHASE
 OR 460 VOLTS, 3 PHASE (REQUIRES DEDICATED NEUTRAL)
 * CURTAIN COLOR: BLUE OR WHITE



ASI DOORS, Inc.
5848 North 95th Court
Milwaukee, WI 53225
1-800-558-7068
www.asidoors.com

GENERIC DRAWING

APPROVALS
FABRICATION CAN PROCEED ACCORDING TO THE SPECIFICATION SHOWN EXCEPT AS NOTED.

BY _____ DATE _____

ASI JOB NUMBER:
CUSTOMER ORDER NUMBER:
SOLD TO:
SHIP TO:

QUANTITY OF DOORS:
QUANTITY OF PRINTS: 1
DOOR ASSEMBLY NO: 91B0009RV
ELECTRICAL DRAWING NO:

TITLE MODEL 615F FABRIC ROLL-UP
RIGHT HAND OPERATOR - FREEZER

DRAWN BY	DATE	SHEET 1 OF	DRAWING NO. 615F	REV.
----------	------	------------	------------------	------