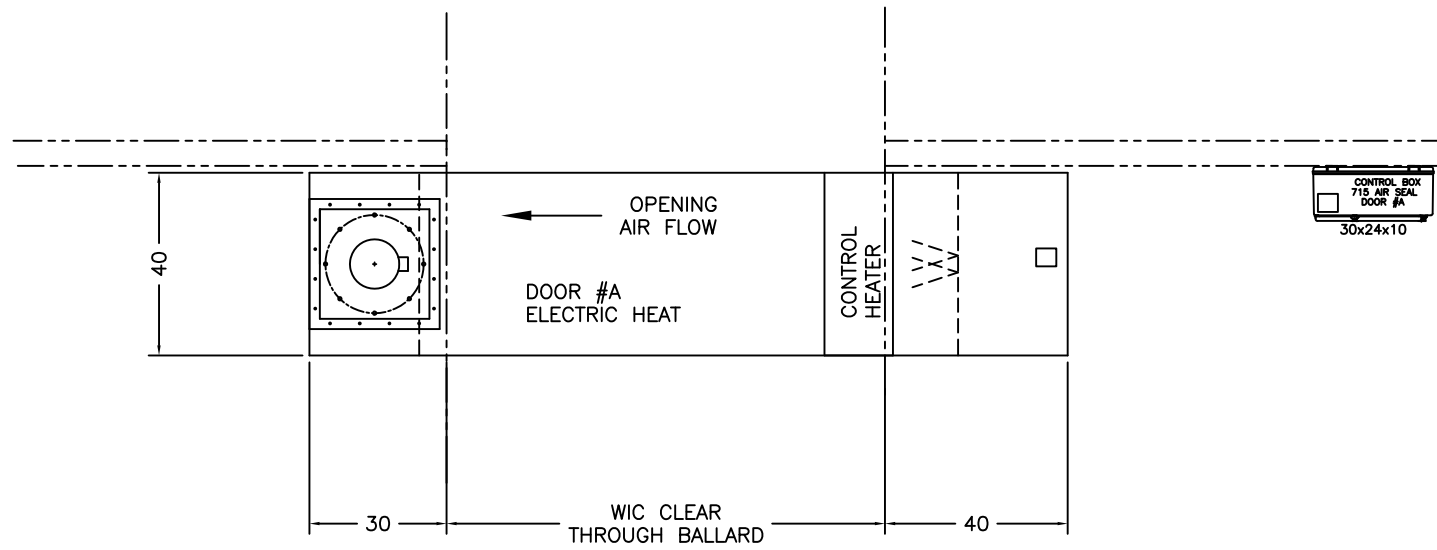


FOR OFFICE USE ONLY	
B-WIC	
B-HIC	

°F FREEZER SIDE

°F DOCK SIDE

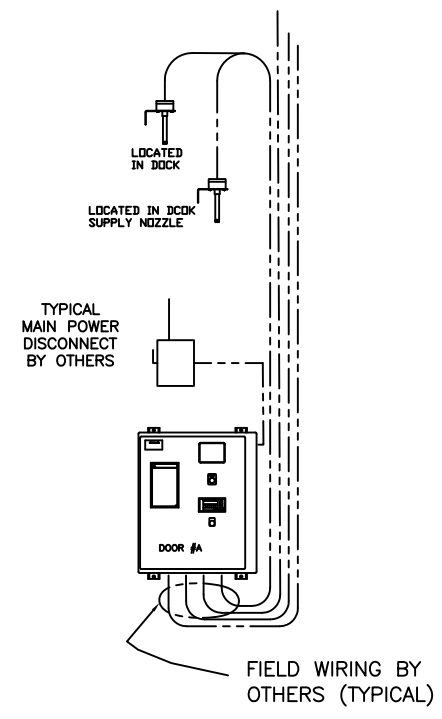
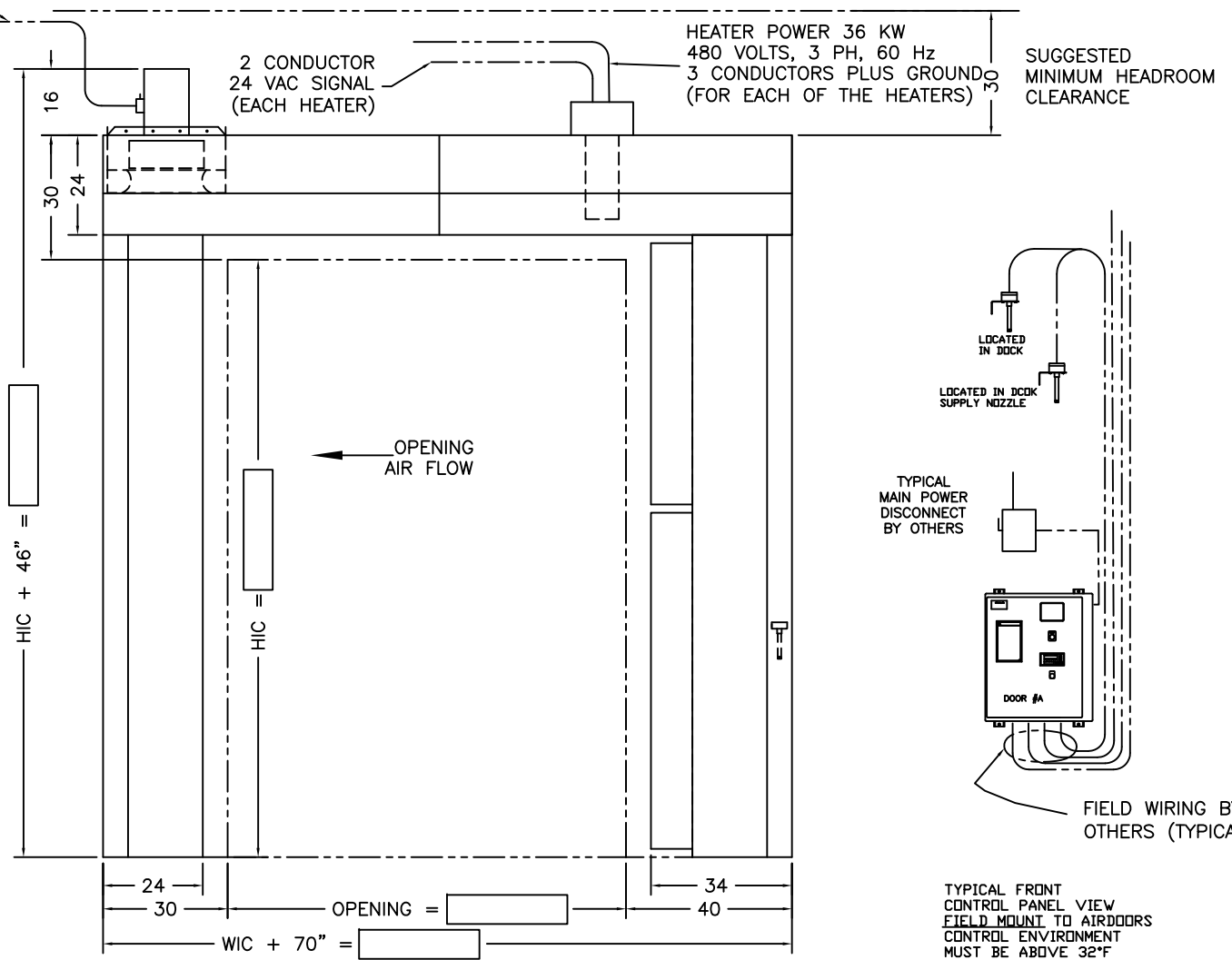
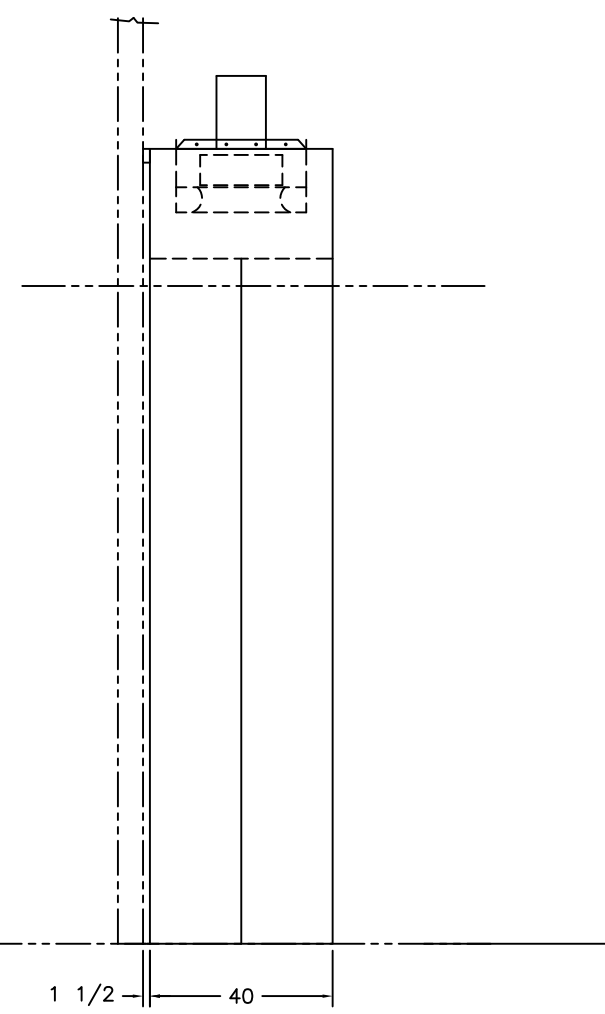


- OPTIONS**
- MATERIAL:
- GALVANIZED
 - STAINLESS STEEL
 - FREEZER MOUNT (INSULATED)
 - COOLER MOUNT (NON-INSULATED)
- VOLTAGE: 480V, 3Ø STD.
- LEFT HAND SUPPLY
 - RIGHT HAND SUPPLY
 - HIC ≤ 132"
 - HIC > 132"

SPECIAL NOTES

* TAG DOORS AS:

BLOWER POWER (5 HP)
480 VOLTS, 3 PH, 60 Hz
3 CONDUCTORS PLUS GROUND



TYPICAL FRONT CONTROL PANEL VIEW
FIELD MOUNT TO AIRDOORS
CONTROL ENVIRONMENT
MUST BE ABOVE 32°F

GENERIC DRAWING

DOORS #A 715 ELECTRIC SINGLE ELECTRIC	ELECTRICAL REQUIREMENTS (EACH PANEL) ELECTRICAL SCHEMATIC DOOR #A: 18D230
	<ul style="list-style-type: none"> * AIR SEAL- 5 HP 8.6 FLA * CONTROL BOX- 2.0 FLA * HEATER- 45.2 FLA (36 KW) EACH PANEL AMP DRAW = 56 @ 480 VAC
	ELECTRICAL REQUIREMENTS (TOTAL)
	TOTAL FULL LOAD AMP DRAW = 115 @ 480 VAC DOOR HEAT AMP DRAW = 15 @ 115 VAC

APPROVAL DRAWING

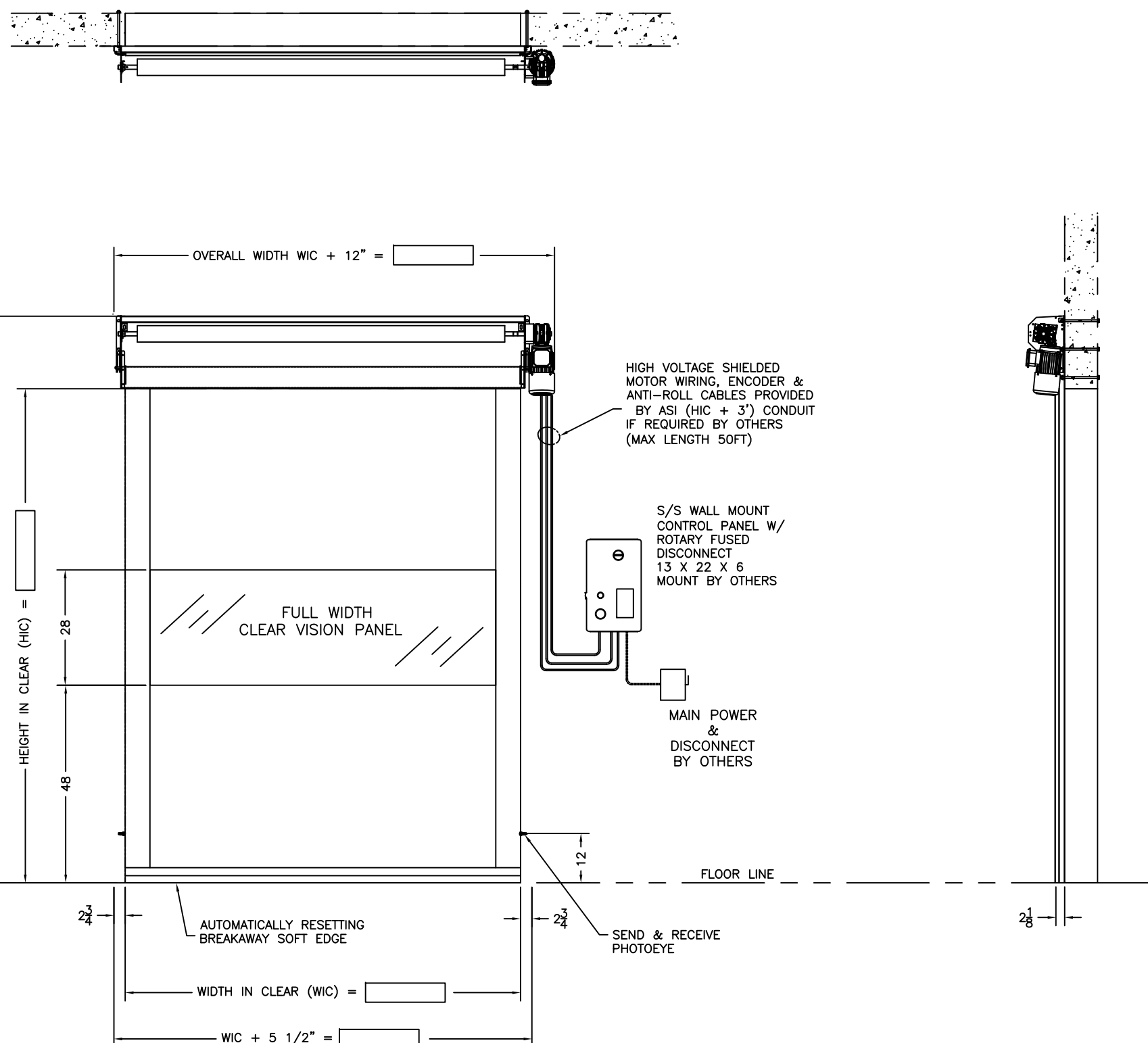
NO. OF OPENINGS 1
SHEET 1 OF 1 NO. OF REQUESTED COPIES 6
SHIP TO: _____
SOLD TO: _____
CUSTOMER ORDER NO. _____ ASI JOB NO. _____

CUSTOMER APPROVAL
FABRICATION CAN PROCEED ACCORDING TO SPECIFICATIONS EXCEPT AS NOTED.
APPROVED BY: _____ DATE: _____



TITLE:
715 AIRSEAL DOOR
WITH SINGLE ELECTRIC HEAT

DOOR ASSEMBLY NO.	WIRING DIAGRAM NO.	DATE:	DRAWING NO.
90D702F1	SEE ABOVE	REVISION DATE:	715



MOTOR DATA
1 HP (0.75 KW)

VOLT/PHASE	RECOMMENDED SERVICE
460/3	6 AMPS
230/1	15 AMPS
208/1	15 AMPS
115/1	20 AMPS

NOTE: 208 & 230 VAC CONTROLS ARE SET TO WORK WITH EITHER SINGLE PHASE OR 3 PHASE POWER INPUT.

- OPTIONS**
- 115V (STD) 208V 1ø 60HZ 230 1ø 60HZ 460 3ø 60 HZ
 - YES NO VISION PANEL (28" HIGH x FULL WIDTH STD)
 - YES NO MULTIPLE VISION (24" x 24") QTY _____
 - YES NO SHROUD ASSEMBLY (HIC + 18")
 - YES NO SIDE GUIDE COVERS
 - YES NO BATTERY BACKUP SYSTEM (ONE SHOT)
(ONLY AVAILABLE ON 115V UNITS)
 - YES NO 2-DOOR INTERLOCK OPTION
(1-DOOR OPEN/1-DOOR CLOSED)
 - YES NO ADDITIONAL PHOTOEYES (ELEVATION _____)
 - YES NO EXTEND CABLES _____ LG (MAX LENGTH 50ft)
 - YES NO DOOR OPEN STATUS CONTACT
 - YES NO DOOR CLOSED STATUS CONTACT
- MATERIAL CONSTRUCTION:
- GALV'D STEEL (STD) WHITE METAL STAINLESS STEEL
- CURTAIN COLOR: BLUE ORANGE OTHER _____
- YES NO PRE-ANNOUNCE TO CLOSE:
 LIGHT KIT _____ QTY. (23B043)

- ACTIVATION DEVICES
- 0 PULL CORD, LOOSE (24C507F1)
 - 0 SINGLE BUTTON STATION, LOOSE (24B029F1)
 - 0 OPEN/CLOSE W/E STOP STATION, LOOSE (24A0078NN)
 - 0 MOTION DETECTOR, 16' MAX, LOOSE (23A284)
 - 0 PROGRAMMING REMOTE (23A285)
 - 0 LOOP DETECTOR, WIRED IN (55B169F8)
 - 0 LD, WIRE, & GROUT, 250', LOOSE (55B169F6)
 - 0 1-CHNL RADIO RECEIVER, WIRED IN (23A252)
 - 0 1-CHNL RADIO TRANSMITTER, LOOSE (23A253)
 - 0 2-CHNL RADIO TRANSMITTER, LOOSE (23A255)

SPECIAL NOTES

TAG DOOR AS: #

NOTE:
* JAMB CAPPING BY OTHERS

***** **ADVISE** *****

* OPERATOR LOCATION: RIGHT HAND (SHOWN) LEFT HAND IS OPPOSITE
* VOLTAGE: 115, 208, OR 230 SINGLE PHASE OR 460 VOLTS, 3 PHASE
* CURTAIN COLOR: BLUE OR ORANGE



ASI Technologies, Inc.
5848 North 95th Court
Milwaukee, WI 53225
1-800-558-7068
www.asidoors.com

GENERIC DRAWING

APPROVALS
FABRICATION CAN PROCEED ACCORDING TO THE SPECIFICATION SHOWN EXCEPT AS NOTED.

BY _____ DATE _____

ASI JOB NUMBER:
CUSTOMER ORDER NUMBER:
SOLD TO:
SHIP TO:

QUANTITY OF DOORS:
QUANTITY OF PRINTS: 1
DOOR ASSEMBLY NO: 91B0008RV
ELECTRICAL DRAWING NO:

TITLE MODEL 515 RIGHT HAND OPERATOR				
DRAWN BY	DATE	SHEET 1 OF	DRAWING NO. 515	REV.