



MODEL 715D-R

Double Horizontal Recirculatory Air Cooler/Freezer Door
with Integrated High Speed Fabric Roll-Up

■ ULTIMATE PRODUCTIVITY

AirSeal's high velocity air barrier allows for unobstructed traffic flow in high volume applications. With no door to wait for productivity through openings is greatly enhanced while eliminating door damage. With dry floors and no compromised visibility, traffic moves quickly and productively through door openings.

■ INCREASED SEAL EFFICIENCY

High traffic openings experience large amounts of open door time on a daily basis. This open time allows a tremendous amount of refrigeration loss and infiltration issues. AirSeal doors are designed to provide a constant seal efficiency during all operational time periods greatly reducing the loss of refrigeration and warm air infiltration. AirSeal doors will significantly reduce fog, ice and moisture associated with wide open doorways.

■ SUPERIOR SAVINGS

In addition to greatly reducing the loss of refrigeration and warm air infiltration, AirSeal door systems can help to reduce moisture issues, coil defrosting burdens and increase refrigeration cycle efficiency. Virtually eliminating ice and frost problems around door openings allows for substantial gains in productivity and material handling efficiencies.

■ ADVANCED TECHNOLOGY

Applying the principles of psychrometrics, AirSeal doors operate in real time automatically reading and adjusting to your changing environmental conditions. Integrated temperature and humidity sensors work in conjunction with our EPLC and optimization controls to maintain an optimally conditioned air barrier.

■ ENHANCED SAFETY

With no moving doors, clear visibility and dry floors, traffic can move quickly, efficiently and safely through openings easily seeing and maneuvering to oncoming traffic avoiding costly impacts and door damage.

■ MAINTENANCE FREE

AirSeal doors are the ultimate in maintenance free design. With only one moving part, AirSeal doors require virtually no adjustments. Door impact damage, worn out components, preventative maintenance and service become a thing of the past.



Innovative Design. Superior Quality. Exceptional Value.

THE COLD STORAGE INDUSTRY'S EXCLUSIVE HIGH-VELOCITY LAMINAR AIR FLOW SYSTEM

AirSeal creates an invisible barrier utilizing high velocity laminar air flow to maintain dual climates, keeping your cold side cold and your warm side warm. We developed AirSeal as a "smart door" that could actually think for itself, automatically adjusting to your temperature and humidity changes, while maximizing energy efficiency through our (EPLC™) and optimization controls. By monitoring and adjusting to your environmental changes the AirSeal door will significantly reduce the fog, ice and moisture commonly associated with wide-open doorways that separate climates. And with reduced refrigeration loss or heat gain and no door to maintain, AirSeal helps you save on energy and maintenance costs.

AirSeal doors will give you unlimited material handling efficiency and complete visibility through your door openings.

THE LEADER IN COLD STORAGE DOOR INNOVATION

Enviro | ASI Doors, Inc.
5848 North 95th Court | Milwaukee, WI 53225
PHONE: 414.464.6200 | FAX: 414.464.9863 | TOLL-FREE: 800.558.7068
www.envirodoors.com



enviro[®]
Cold Storage Doors

MODEL 715D-R

Double Horizontal Recirculatory Air Cooler/Freezer Door with Integrated High Speed Fabric Roll-Up

DESIGN AND CONSTRUCTION

(Door designed for vehicular traffic.)

DOOR SIZES

- Maximum: 10'0" x 15'0".
 - Minimum: 6'0" x 8'0".
- (Other sizes available - consult factory.)

CONSTRUCTION

AirSeal:

- Galvanized metal.
- Stainless steel (optional).

Fabric:

- Multi-filament PVC coated curtain material.
- Soft bottom edge - no bottom bar required.

OPERATION

Electric operation:

- AirSeal: 4,600 cfm at 4" of water gauge.
- Fabric: High dual speed operation.

OPERATOR

- AirSeal: High efficiency low noise direct driven operator with minimum 5 h.p. motor.
- Fabric: High performance, high efficiency, washdown rated 1 h.p. electric motor.

ELECTRICAL FEATURES

AirSeal:

- NEMA-4 control enclosure.
- Fully programmable EPLC controls. (Freezer door)
- Variable frequency drive.
- Optimization controls. (Freezer door)

Fabric:

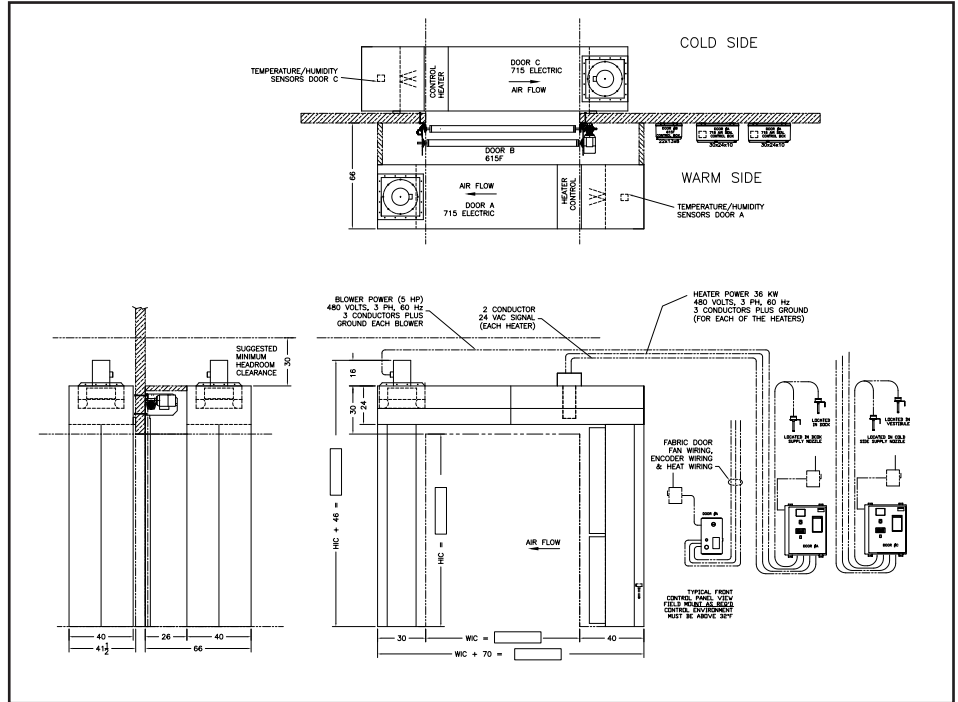
- Standard pushbutton to open and time delay to close.
- Send and receive reversing photo-eye (std).
- Soft bottom edge with washdown rated wireless electronic instant reversing edge.
- Breakaway curtain with automatic reset from either direction.
- Manual motor override for opening without power.

WARRANTY

- One year limited warranty on all components.

OPTIONS

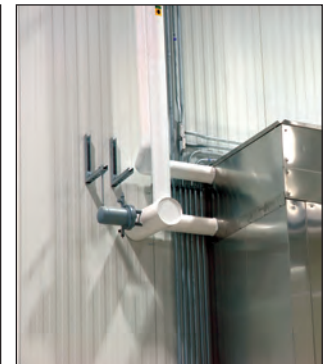
- Manual / power sliding insulated cooler/freezer door.
- Digital display on cooler door.
- Interlock to existing door.
- Strobe lights.
- Automatic activation devices for secondary doors.
- Stainless steel construction.
- Wash down components.
- Waste heat reclaim coil. (Freezer door)
- Low profile header system.
- Insulated vestibules.
- Bollards, thru-guarding and fencing.
- Defrost blowers.



OPTIMIZATION CONTROLS



DIRECT DRIVE MOTOR



OPTIONAL WASTE HEAT RECLAIM



OPTIONAL BOLLARDING AND THRU-GUARDING

THE LEADER IN COLD STORAGE DOOR INNOVATION

Enviro | ASI Doors, Inc.
5848 North 95th Court | Milwaukee, WI 53225
PHONE: 414.464.6200 | FAX: 414.464.9863 | TOLL-FREE: 800.558.7068
www.envirodoors.com