

■ **EXCEPTIONAL VALUE**

High quality, durable FRP door panel. The exclusive mitered corners of frame are face welded, then painstakingly ground and polished to an unmatched finish. Built with superior quality and reliability, this door offers proven design, functionality and exceptional value.

■ **INNOVATIVE CONSTRUCTION**

Marathon's personnel door has a durable FRP panel with finished edges of reinforced pultruded fiberglass tube. Hardware locations are also reinforced with solid resin impregnated, pultruded fiberglass tube.

■ **TIGHTEST SEAL**

Utilizing a frame mounted, continuous three-sided perimeter gasket, coupled with a bottom sweep gasket.

■ **SECURE INTERLOCKS**

Variety of electronic and mechanical locking options to meet the strictest FDA/DEA requirements. Marathon will design and supply a state-of-the-art interlocking system from the basic two door interlock to an entire production floor.

■ **COMPLETE DOOR SYSTEM**

Marathon provides a complete door system from panel choice, frame design, hardware selection, and interlocking design, to complement any environment. This ensures an uninterrupted process in completing your project by maintaining a single source relationship.

■ **UNMATCHED QUALIFICATIONS**

With over 40 years of combined experience, our professional sales consulting team will ensure your mission-critical requirements, while maintaining our uncompromising dedication to quality and value added service.

# MODEL 130/135

High Performance FRP - Paired Swinging Personnel Door System

**MODEL 130 MANUAL | 135 Power**



Innovative Design. Superior Performance. Exceptional Value.

## MARATHON HIGH PERFORMANCE DOORS, DESIGNED FOR THE LONG RUN.

Performance and value are key considerations for facilities professionals across a variety of industries. Marathon personnel doors confirm, that cost effectiveness does not have to mean a sacrifice in quality. Marathon's smooth, durable FRP panels with finished edges and reinforced hardware locations are designed to look great and provide reliable operation, year after year, even in harsh, wet or corrosive environments.

Superior aesthetics, uncompromising quality, exceptional reliability and unmatched value define Marathon personnel doors. Designed from the ground up to far exceed the offerings of other door manufacturers, yet priced to meet demanding budget constraints, this FRP door is truly a "no compromise" solution.

Marathon: high performance, lower operational costs, greater value.

**HIGH PERFORMANCE DOORS FOR THE LONG RUN**

Marathon | A Division of ASI Doors, Inc.  
5848 North 95th Court | Milwaukee, WI 53225  
PHONE: 414.464.6200 | FAX: 414.464.9863 | TOLL-FREE: 800.558.7068  
[www.marathondoors.com](http://www.marathondoors.com)

# MODEL 130/135

High Performance FRP - Paired Swinging  
Personnel Door System

MODEL 130 MANUAL | 135 Power

## DESIGN AND CONSTRUCTION

### DOOR SIZES

- Up to 8' wide x 8' high.  
(For larger sizes, consult factory.)

### PANEL CONSTRUCTION

- 1 3/4" thick laminated fiberglass panel surface with finished edges of reinforced, pultruded fiberglass tube.
- All hinge and hardware locations reinforced with solid resin impregnated pultruded fiberglass tube.
- Standard white color. (Other colors available upon request.)

### FRAME CONSTRUCTION

- 16 ga., 304 #4 stainless steel, face welded and polished.
- Available in either single or double rabbet construction.
- Prepped for a wide variety of hardware options.

### HARDWARE

- Grade 2 Architectural steel hardware standard:
  - Grade 2 steel ball bearing hinge sets.
  - Grade 2 steel mounted closers.
  - Grade 2 steel push/pull hardware.
  - Frame mounted, three sided bulb type perimeter gasket and bottom sweep gasket.

### PERFORMANCE FEATURES

- Manual open with standard spring assist closer.
- Power operation utilizing an electromechanical operator, microprocessor controlled in 120 volt, single phase, with mechanical spring close.
- Operator completely enclosed within an aluminum flat top shroud.
- Overhead presence sensor to provide threshold and swing side obstruction detection.
- Pushplate to open; time delay to close.
- In case of power failure, door can be opened manually at any time.

### OPTIONS

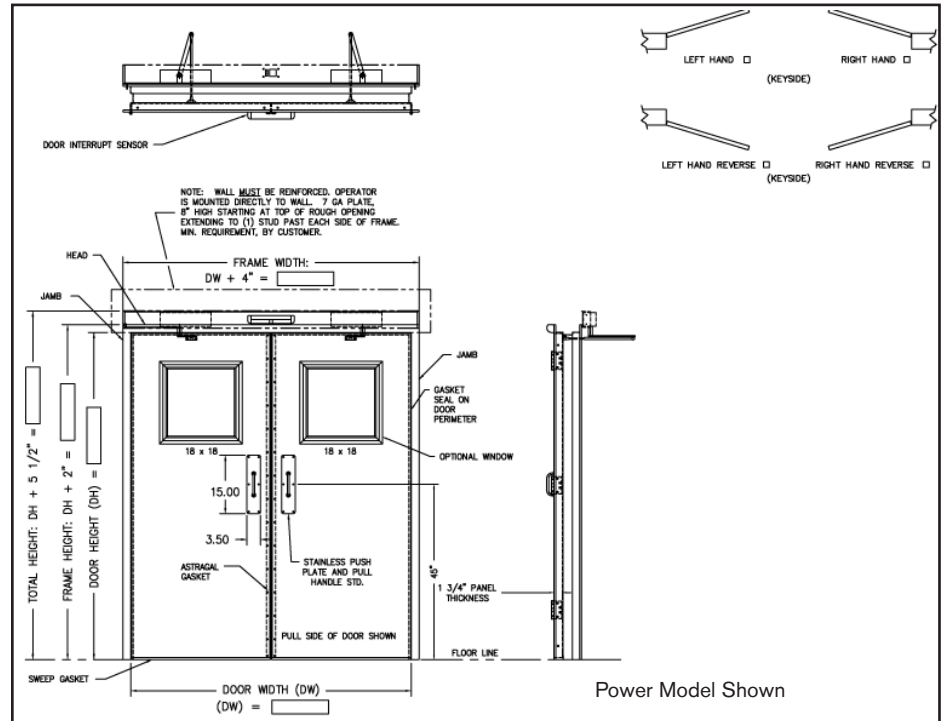
- Vision panel with standard sloped frame.
- UL fire rated.
- Knock-down frame of pultruded fiberglass construction.
- All stainless steel construction available in 316L.
- 14 ga. stainless steel frames.
- Stainless steel clad panel. (Fire rated and non-rated.)
- Custom designed interlocking system.
- Hospital stops 4" or 6".
- Stainless steel closer cover.
- Pultruded fiberglass frame.
- Can provide any major lines and grades of architectural hardware.

### OPTIONS (POWER MODELS ONLY)

- Touchless wall-mounted activation switch.
- Actuators: Variety of activation devices available upon request.

### WARRANTY

- One year limited warranty on all components.



### FRAME ASSEMBLY

Optional stainless steel frame is fully mitered and completely welded through the throat. Single or double rabbet.



### SLOPED SHROUD FOR POWER UNITS

For superior cleanliness and aesthetic appeal.



### STAINLESS STEEL CLOSER COVER

(Shown on stainless steel fire door) Another option for superior cleanliness and aesthetic appeal.



### FULLY MORTISED HINGES

(Shown on stainless steel door) Flush mortised hinges provide a clean and smooth finish to the door.



### ACTUATORS

Optional activation devices are available for power model doors including touchless wall-mounted switch.

## HIGH PERFORMANCE DOORS FOR THE LONG RUN

Marathon | A Division of ASI Doors, Inc.

5848 North 95th Court | Milwaukee, WI 53225

PHONE: 414.464.6200 | FAX: 414.464.9863 | TOLL-FREE: 800.558.7068

[www.marathonddoors.com](http://www.marathonddoors.com)