

- Y E N S O**
- OPTIONS**
- FRP PANEL- COLOR: WHITE (STD) OTHER ____
 - 16GA. 304 #4 SS CAPPING 316L #4 SS CAPPING
 - 16GA. 304 #4 STAINLESS STEEL DOOR FRAME
 - WELDED KNOCKDOWN
 - FRP DOOR FRAME
 - CHEMICALLY WELDED SOLID FRAME
 - KNOCKDOWN - 3 PIECE FRAME
 - ANCHOR STYLE
 - NEW STEEL STUD WALL
 - NEW MASONRY WALL
 - EXISTING
 - 45° HOSPITAL STOP 4" HIGH 6" HIGH
 - WINDOW (_____) 1/4" CLEAR TEMPERED GLASS WITH SLOPED 304 #4 STAINLESS STEEL VISION KIT FRAME
 - WINDOW (_____) FLUSH CLEAR TEMPERED GLASS
 - PULL SIDE KICKPLATE, HEIGHT: ____ 304 #4 STAINLESS STEEL
 - PUSH SIDE KICKPLATE, HEIGHT: ____ 304 #4 STAINLESS STEEL
 - HINGES
 - 3 HINGES (DH < 90") 4 HINGES (DH >= 90")

ALL NECESSARY WIRING TO BE SUPPLIED BY OTHERS

STANDARD & LOOSE PARTS ITEMS

* PROVIDE

SPECIAL NOTES

TAG DOOR AS: #
NOTES:

- ***** ADVISE *****
- * SWING: RH OR RHR OR LH OR LHR
 - * WALL THICKNESS:
 - * WALL CONSTRUCTION:
 - * FRAME STYLE: WELDED (SHOWN) OR KNOCKDOWN
 - * ANCHOR STYLE:
 - * JAMB PROFILE: SLIDE IN/FLUSH (SHOWN) OR A WRAPPING WALL

CLEANSEAL®
Controlled Environment Door Systems

ASI Technologies, Inc.
5848 North 95th Court
Milwaukee, WI 53225
1-800-558-7068
www.asidoors.com

APPROVAL DRAWING

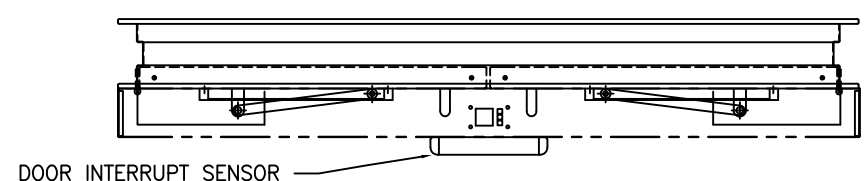
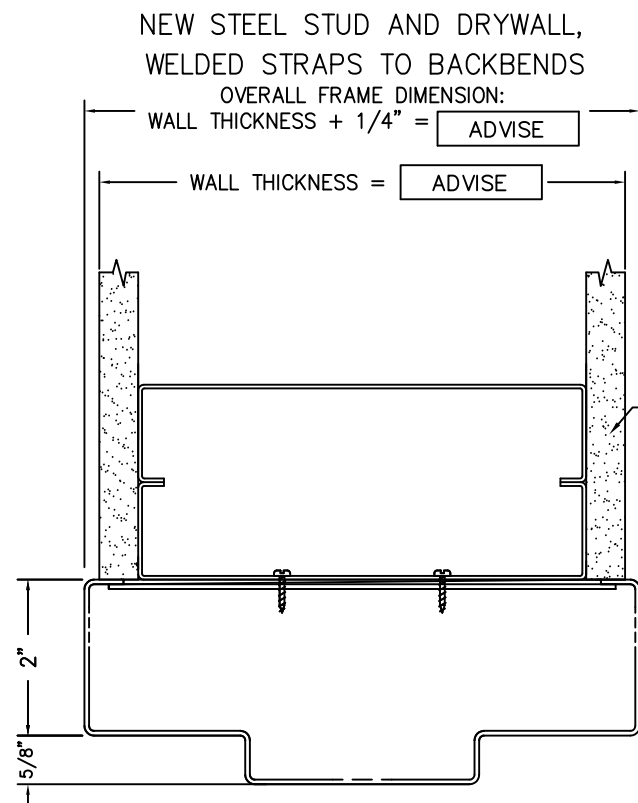
APPROVALS
FABRICATION CAN PROCEED ACCORDING TO THE SPECIFICATION SHOWN EXCEPT AS NOTED.

BY _____ DATE _____

ASI JOB NUMBER:
CUSTOMER ORDER NUMBER:
SOLD TO:
SHIP TO:

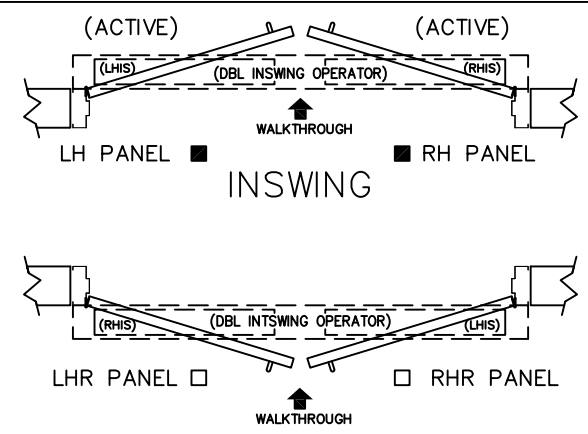
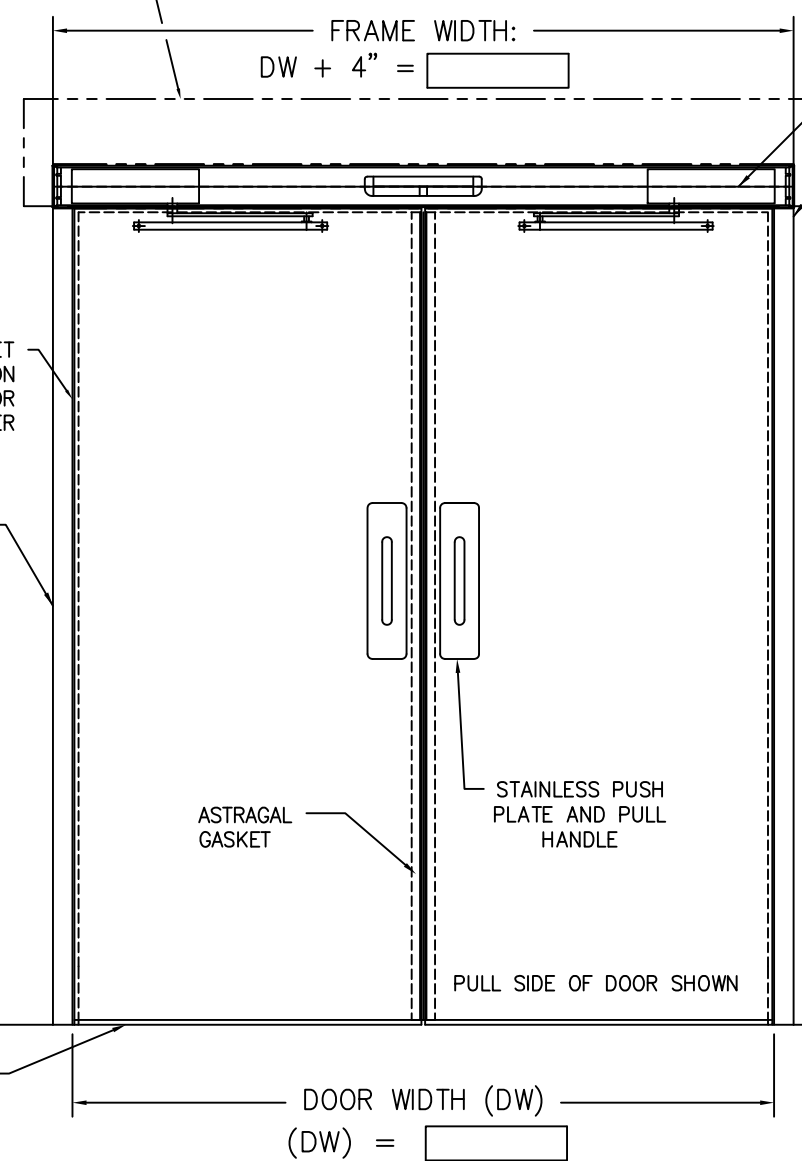
QUANTITY OF DOORS:
QUANTITY OF PRINTS: 6
DOOR ASSEMBLY NO: SPECIAL-UP
ELECTRICAL DRAWING NO: -

| | | | | |
|--------------|------|----------------------------|-------------|------|
| TITLE 130 | | MANUAL PAIR OF SWING DOORS | | |
| DRAWN BY | DATE | SHEET 1 OF | DRAWING NO. | REV. |

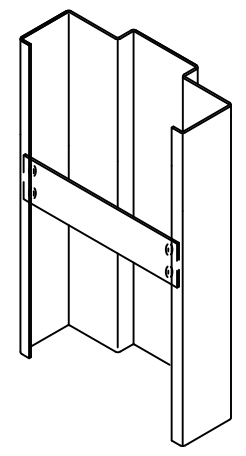


ADVISE

NOTE: WALL MUST BE REINFORCED. OPERATOR IS MOUNTED DIRECTLY TO WALL. 7 GA PLATE, 8" HIGH STARTING AT TOP OF ROUGH OPENING EXTENDING TO (1) STUD PAST EACH SIDE OF FRAME. MIN. REQUIREMENT, BY CUSTOMER.



JAMB PROFILE, SLIDE-IN S/S FRAME



- WELDED STRAPS TO BACKBENDS OF
- STAINLESS STEEL FRAME
- NEW STEEL STUD AND DRYWALL,

- Y E N S O**
- OPTIONS**
- FRP PANEL- COLOR: ■ WHITE (STD) □ OTHER
 - 20GA. 304 #4 SS CAPPING □ 20GA. 316L #4 SS CAPPING
 - 16GA. 304 #4 STAINLESS STEEL DOOR FRAME
 - WELDED □ KNOCKDOWN
 - FRP DOOR FRAME
 - CHEMICALLY WELDED SOLID FRAME
 - KNOCKDOWN - 3 PIECE FRAME
 - □ ANCHOR STYLE - WELDED STRAPS
 - NEW STEEL STUD WALL
 - NEW MASONRY WALL
 - EXISTING
 - 45° HOSPITAL STOP □ 4" HIGH □ 6" HIGH
 - WINDOW () 1/4" CLEAR TEMPERED GLASS WITH SLOPED 304 #4 STAINLESS STEEL VISION KIT FRAME
 - WINDOW () FLUSH CLEAR TEMPERED GLASS
 - PULL SIDE KICKPLATE, HEIGHT: 304 #4 STAINLESS STEEL
 - PUSH SIDE KICKPLATE, HEIGHT: 304 #4 STAINLESS STEEL
 - □ HINGES
 - 3 HINGES (DH < 90") □ 4 HINGES (DH >= 90")
 - □ SHROUD □ 0" ■ 30" □ 45"

VOLTAGE 115 VAC, SINGLE PHASE
ANY AND ALL NECESSARY WIRING TO BE SUPPLIED BY OTHERS

- STANDARD & LOOSE PARTS ITEMS**
- * PROVIDE (1) N35-B100 TYPE DBL OPERATOR
 - * PROVIDE 304 #4 STAINLESS STEEL SLOPED SHROUD
 - * PROVIDE (1) ACUSENSOR 3 MOTION SENSOR
 - * PROVIDE (2) PUSHPLATE (23A227), LOOSE, STANDARD (X042)

SPECIAL NOTES

TAG DOOR AS: *****ADVISE*****

NOTES:

******* ADVISE *******

- * SWING: RH, LH (SHOWN), OR RHR, LHR
- * OPERATOR: INSWING (SHOWN) OR OUTSWING
- * WALL THICKNESS:
- * WALL CONSTRUCTION:
- * FRAME STYLE: WELDED (SHOWN) OR KNOCKDOWN
- * ANCHOR STYLE:
- * JAMB PROFILE: SLIDE IN/FLUSH (SHOWN) OR A WRAPPING WALL

APPROVAL DRAWING

APPROVALS
FABRICATION CAN PROCEED ACCORDING TO THE SPECIFICATION SHOWN EXCEPT AS NOTED.

BY _____ DATE _____

ASI JOB NUMBER:
CUSTOMER ORDER NUMBER:
SOLD TO:
SHIP TO:

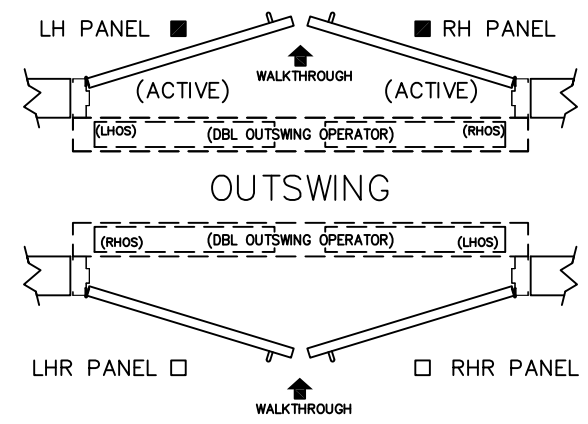
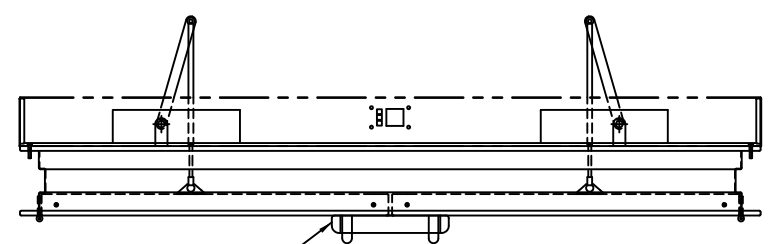
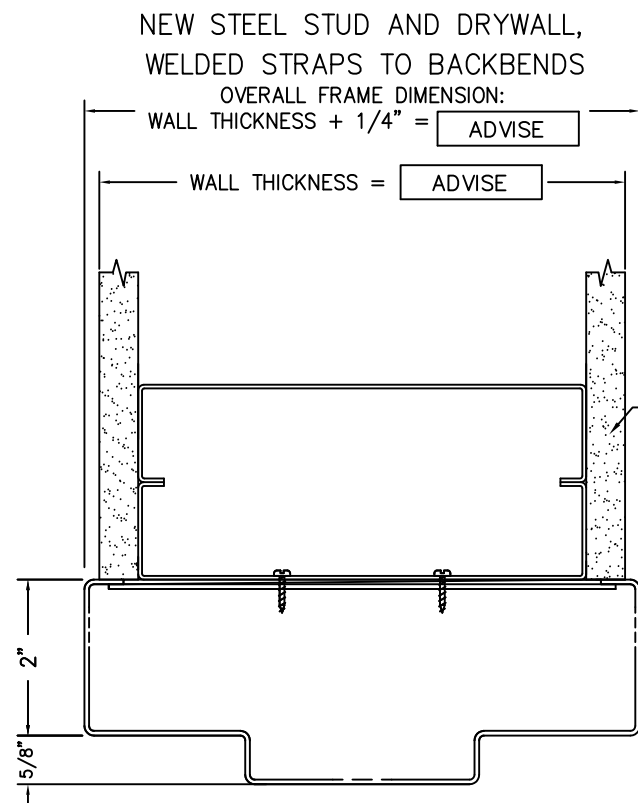
QUANTITY OF DOORS:
QUANTITY OF PRINTS: 1
DOOR ASSEMBLY NO: 135
ELECTRICAL DRAWING NO: -

TITLE
135 POWER PAIRED INSWING DOOR

| | | | | |
|----------|------|---------------|-----------------------|------|
| DRAWN BY | DATE | SHEET 1 OF | DRAWING NO. 135RHI | REV. |
|----------|------|---------------|-----------------------|------|

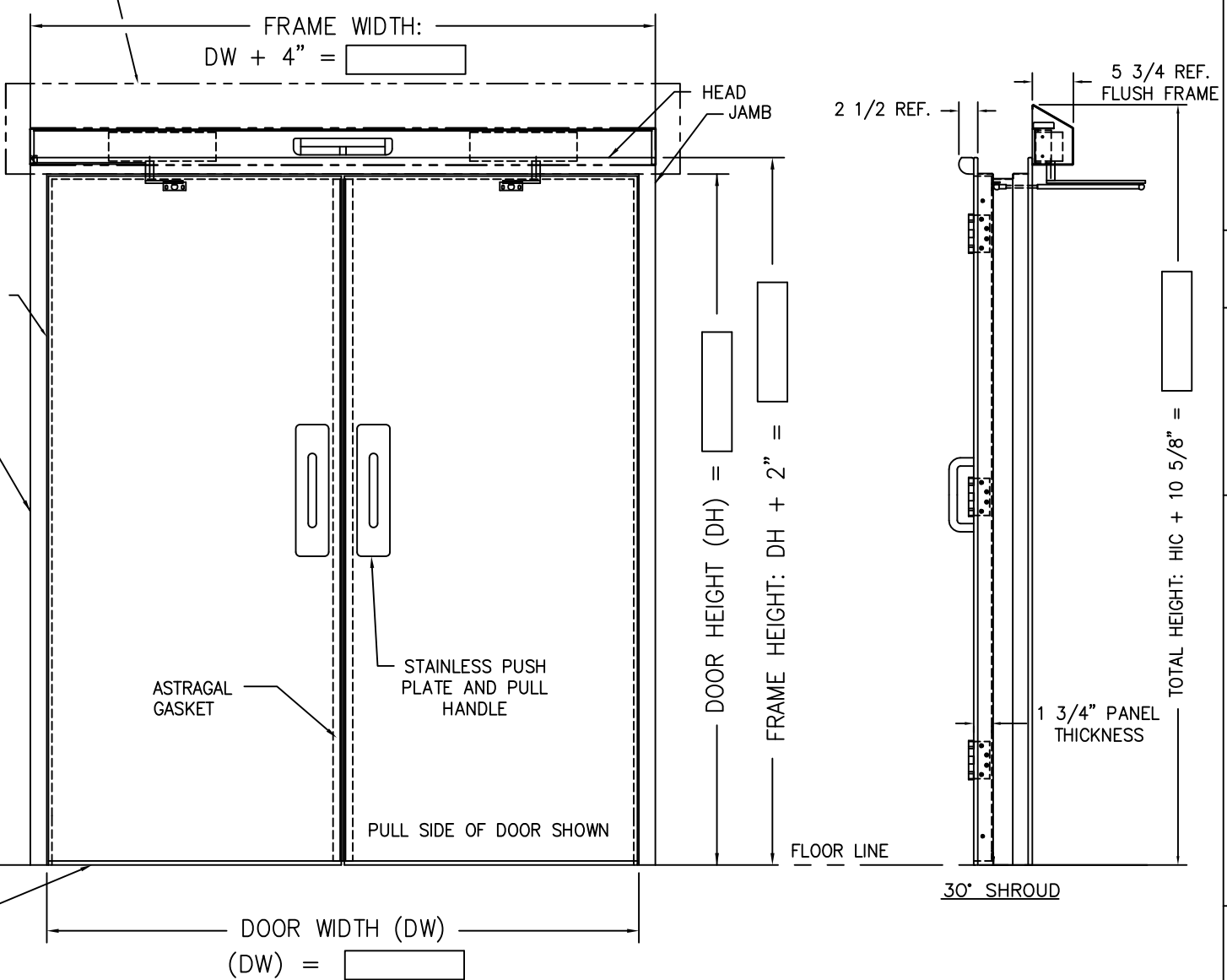
CLEANSEAL®
Controlled Environment Door Systems

ASI Doors, Inc.
5848 North 95th Court
Milwaukee, WI 53225
1-800-558-7068
www.asidoors.com

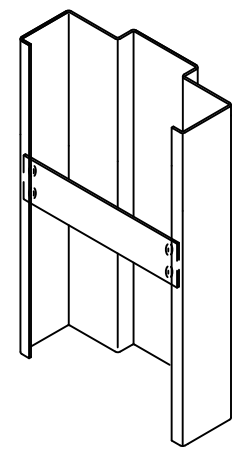


ADVISE

NOTE: WALL MUST BE REINFORCED. OPERATOR IS MOUNTED DIRECTLY TO WALL. 7 GA PLATE, 8" HIGH STARTING AT TOP OF ROUGH OPENING EXTENDING TO (1) STUD PAST EACH SIDE OF FRAME. MIN. REQUIREMENT, BY CUSTOMER.



JAMB PROFILE, SLIDE-IN S/S FRAME



- WELDED STRAPS TO BACKBENDS OF
- STAINLESS STEEL FRAME
- NEW STEEL STUD AND DRYWALL,

- Y E S O**
- OPTIONS**
- FRP PANEL- COLOR: ■ WHITE (STD) OTHER ____
 - 20GA. 304 #4 SS CAPPING 20GA. 316L #4 SS CAPPING
 - 16GA. 304 #4 STAINLESS STEEL DOOR FRAME
 - WELDED KNOCKDOWN
 - FRP DOOR FRAME
 - CHEMICALLY WELDED SOLID FRAME
 - KNOCKDOWN - 3 PIECE FRAME
 - ANCHOR STYLE - WELDED STRAPS
 - NEW STEEL STUD WALL
 - NEW MASONRY WALL
 - EXISTING
 - 45" HOSPITAL STOP 4" HIGH 6" HIGH
 - WINDOW (_____) 1/4" CLEAR TEMPERED GLASS WITH SLOPED 304 #4 STAINLESS STEEL VISION KIT FRAME
 - WINDOW (_____) FLUSH CLEAR TEMPERED GLASS
 - PULL SIDE KICKPLATE, HEIGHT: ____ 304 #4 STAINLESS STEEL
 - PUSH SIDE KICKPLATE, HEIGHT: ____ 304 #4 STAINLESS STEEL
 - HINGES
 - 3 HINGES (DH < 90") 4 HINGES (DH >= 90")
 - SHROUD 0' ■ 30' 45'

VOLTAGE 115 VAC, SINGLE PHASE
ANY AND ALL NECESSARY WIRING TO BE SUPPLIED BY OTHERS

- STANDARD & LOOSE PARTS ITEMS**
- * PROVIDE (1) N35-B100 TYPE DBL OPERATOR
 - * PROVIDE 304 #4 STAINLESS STEEL SLOPED SHROUD
 - * PROVIDE (1) ACUSENSOR 3 MOTION SENSOR
 - * PROVIDE (2) PUSHPLATE (23A227), LOOSE, STANDARD (X042)

SPECIAL NOTES

TAG DOOR AS: *****ADVISE*****

NOTES:

***** **ADVISE** *****

- * SWING: RH, LH (SHOWN), OR RHR, LHR
- * OPERATOR: OUTSWING (SHOWN) OR INSWING
- * WALL THICKNESS:
- * WALL CONSTRUCTION:
- * FRAME STYLE: WELDED (SHOWN) OR KNOCKDOWN
- * ANCHOR STYLE:
- * JAMB PROFILE: SLIDE IN/FLUSH (SHOWN) OR A WRAPPING WALL

APPROVAL DRAWING

CLEANSEAL® ASI Doors, Inc.
5848 North 95th Court
Milwaukee, WI 53225
1-800-558-7068
www.asidoors.com

APPROVALS
FABRICATION CAN PROCEED ACCORDING TO THE SPECIFICATION SHOWN EXCEPT AS NOTED.

BY _____ DATE _____

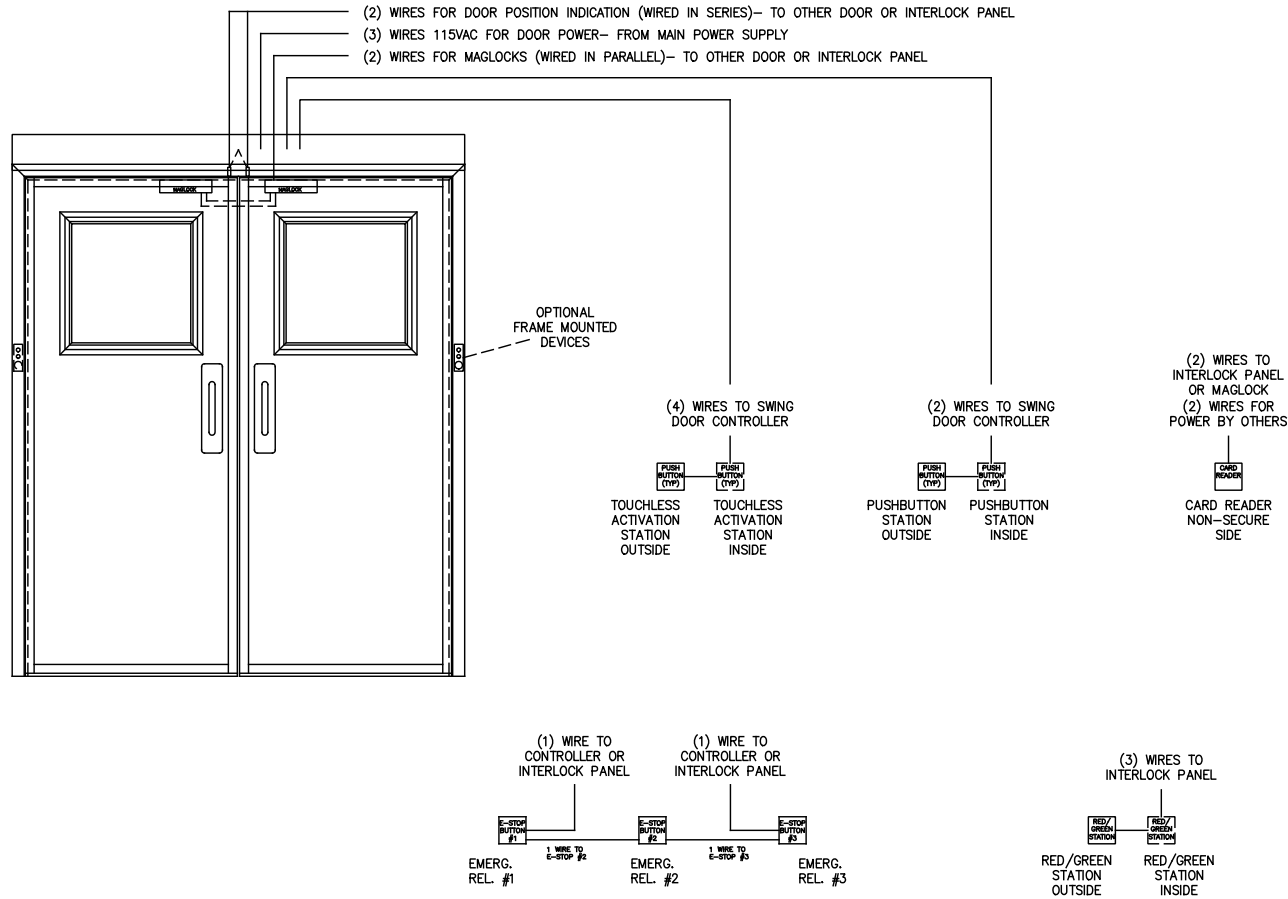
ASI JOB NUMBER:
CUSTOMER ORDER NUMBER:
SOLD TO:
SHIP TO:

QUANTITY OF DOORS:
QUANTITY OF PRINTS: 1
DOOR ASSEMBLY NO: 135
ELECTRICAL DRAWING NO: -

TITLE
135 POWER PAIRED OUTSWING DOORS

| | | | |
|----------|------|---------------|------------------------------|
| DRAWN BY | DATE | SHEET 1 OF | DRAWING NO. 135RHO |
| | | | REV. |

PROVIDE SPARE WIRES FROM EACH DEVICE TO CONTROLLER OR INTERLOCK PANEL



E-STOPS WIRED IN SERIES- ANY BUTTON DISABLES DOOR AND/OR INTERLOCK
 * ADDITIONAL BUTTONS A/R, WIRED IN SERIES

Y
E
S
N
O

OPTIONS

- DOOR POSITION RELAY IN HEADER
- DOOR POSITION SWITCH IN DOOR/FRAME
- ACTIVATION BUTTON, QTY: —
- TOUCHLESS ACTIVATION BUTTON, QTY: —
- CARD READER BY OTHERS
- MAGNETIC LOCK, SURFACE MOUNT, 23A0453
- MAGNETIC LOCK, WITH POS. SWITCH, SURFACE MOUNT, 23A105
- MAGNETIC LOCK, WITH POS. SWITCH, CONCEALED MOUNT, 23A0377
- CARD READER BY OTHERS
- REQUEST TO EXIT BUTTON, QTY: —
- E-RELEASE, SINGLE GANG, 24A0073NN, QTY: —
- RED/GREEN STATION, SINGLE GANG, 23A0093NN20, QTY: —
- RED/GREEN/E-REL STATION, SINGLE GANG, 24A0069NN, QTY: —
- RED/GREEN STATION, FRAME MOUNTED 23A0097NN20, QTY: —
- R/G/E-REL STATION, FRAME MOUNTED, 24A0070NN, QTY: —

SPECIAL NOTES

- * TYPICAL MANUAL SINGLE SWING DOOR DETAIL
- * ALL NECESSARY WIRING TO BE SUPPLIED BY OTHERS
- * DOORS ARE NORMALLY UNLOCKED, UNLESS SPECIFIED OTHERWISE
- * OPTIONAL DEVICES SHOWN FOR REFERENCE
- * MAGNETIC LOCK FAILS UNLOCKED
- * CONTROL WIRING TO BE LOW VOLTAGE, 18AWG
- * PROVIDE SPARE WIRES FROM EACH DEVICE TO CONTROL OR INTERLOCK PANEL
- * 115VAC REQUIRED FOR OPERATOR POWER

CLEANSEAL[®]
 Controlled Environment Door Systems

ASI Technologies, Inc.
 5848 North 95th Court
 Milwaukee, WI 53225
 1-800-558-7068
 www.asidoors.com

APPROVALS

FABRICATION CAN PROCEED ACCORDING TO THE SPECIFICATION SHOWN EXCEPT AS NOTED.

BY _____ DATE _____

ASI JOB NUMBER:
 CUSTOMER ORDER NUMBER:
 SOLD TO:
 SHIP TO:

QUANTITY OF DOORS:
 QUANTITY OF PRINTS:
 DOOR ASSEMBLY NO:
 ELECTRICAL DRAWING NO: —

TITLE ELECTRICAL RISER DIAGRAM
 POWER PAIRED SWING DOOR

| | | | | |
|----------|----------|--------|-------------|------|
| DRAWN BY | DATE | SHEET | DRAWING NO. | REV. |
| UEG | 11-19-13 | 1 OF 1 | 235 PAIR | |