



MODEL 120/125

Single Swinging Fiberglass Door System

[Model 120 Manual](#) | [Model 125 Power](#)



THE INDUSTRY'S TOP PERFORMING VALUE ENHANCED DOOR SYSTEM

The accelerated rate of change in clean manufacturing practices, coupled with increased regulation and competitive market forces, has put increasing pressure on facility budgets. Performance and value have become inseparable key words for manufacturers worldwide. Companies producing supplements, nutraceuticals, medical devices, over-the-counter formulations, and many others, face new challenges within their facilities as regulators expand their focus beyond traditional pharmaceutical and biotechnology manufacturing. The LXP series of doors provides the solution to these new challenges.

Superior aesthetics, uncompromising quality, exceptional reliability and unmatched value define the LXP doors. Designed from the ground up to far exceed the offerings of other door manufacturers, yet priced to meet demanding budget constraints, the LXP is truly the “no compromise” clean door solution.



Shown with optional, kickplate, vision panel and pultruded fiberglass frame.

EXCEPTIONAL VALUE/INNOVATIVE CONSTRUCTION

High strength, clean and durable fiberglass door panel. The exclusive mitered corners of the frame are face welded, then ground and polished to an unmatched finish. Hardware locations reinforced with solid resin impregnated, fiber glass. Maximum strength, cleanability and corrosion resistance.

SEAL EFFICIENCY

Utilizing a frame mounted three-sided perimeter gasket, coupled with a bottom sweep gasket.

SECURE INTERLOCKS

Variety of electronic and mechanical locking options to meet strict FDA/DEA requirements.

TURNKEY SYSTEM

ASI provides a complete door system from panel choice, frame design, hardware selection, and interlocking design to complement any environment. This ensures an uninterrupted process in completing your project by maintaining a single source relationship.

QUALIFIED

With over 55 years of experience, our professional sales team will ensure your mission-critical requirements, while maintaining our uncompromising dedication to quality and value added service.

DESIGN AND CONSTRUCTION

DOOR SIZES

- Maximum: 4' x 9'
- (Other sizes available - consult factory)

PANEL CONSTRUCTION

- 1-3/4" thick fiberglass panel surface with finished edges of reinforced fiberglass
- All hinge locations reinforced with solid resin impregnated fiberglass
- Hardware locations reinforced with 1/4" thick solid fiberglass
- Standard white color (other colors available upon request)

FRAME CONSTRUCTION

- 16 ga., 304 #4 stainless steel, face welded and polished
- Available in either single or double rabbet construction
- Prepped for a wide variety of hardware options

HARDWARE

- Grade 1 Architectural hardware standard:
 - Hager BB1191 standard weight stainless steel fully mortised hinges
 - LCN 4041 heavy-duty closer
 - Stainless steel push/pull hardware
 - Frame mounted, three sided bulb type perimeter gasket and bottom sweep gasket

PERFORMANCE FEATURES

- Manual open with standard spring assist closer
- Power operation utilizing an electromechanical operator, microprocessor controlled in 120 volt, single phase, with mechanical spring close
- Overhead presence sensor to provide threshold and swing side obstruction detection
- Activation device to open; time delay to close
- In case of power failure, door can be opened manually

OPTIONS

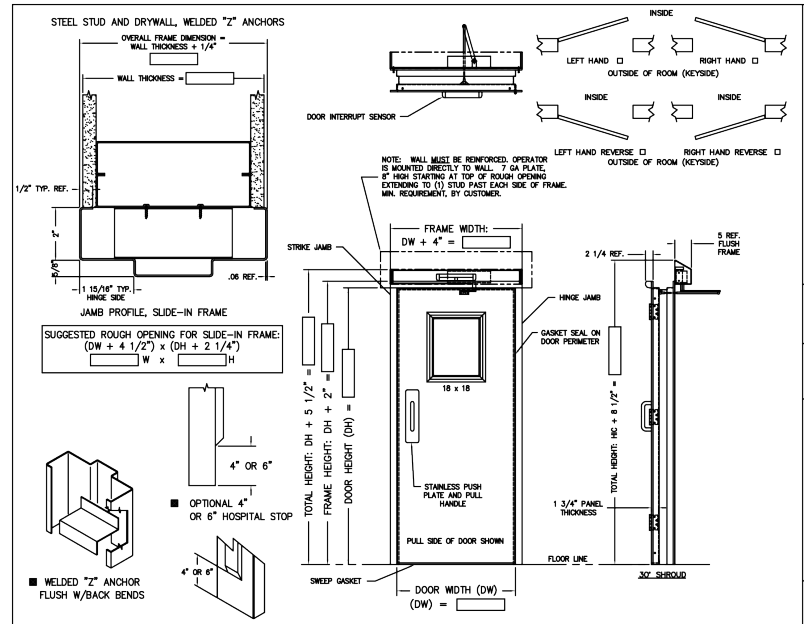
- Vision panel with standard sloped frame (UL fire rated)
- Cleanview® flush vision panel
- Knock-down or chemically welded fiberglass frame
- All stainless steel construction available in 316L
- 14 ga. stainless steel frames
- Stainless steel clad panel (Fire rated and non-rated)
- Custom designed interlocking system
- Hospital stops 4" or 6"
- Stainless steel closer cover
- Can provide any major lines and grades of architectural hardware

OPTIONS (POWER MODELS ONLY)

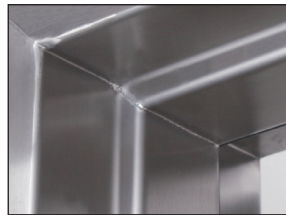
- Touchless wall-mounted activation switch
- Actuators: Variety of activation devices available

WARRANTY

- Two year limited warranty on all components



WIC = Door Opening Width in Clear
HIC = Door Opening Height in Clear



Frame Assembly
Fully mitered and completely welded through the throat.
Single or double rabbet



Sloped Shroud for Power Units
For superior cleanliness and aesthetic appeal.



Stainless Steel Closer Cover
(Shown on stainless steel fire door) Another option for superior cleanliness and aesthetic appeal.



Fully Mortised Hinges
(Shown on stainless steel door) Flush mortised hinges provide a clean and smooth finish to the door.