



OPEN UP TO WHAT'S POSSIBLE

# MODEL 1270/1260

## Bi-Part Sliding Seamless Molded Fiberglass Door System

[Model 1270 Manual](#) | [Model 1260 Power](#)



### THE INDUSTRY'S TOP PERFORMING VALUE ENHANCED DOOR SYSTEM

Cleanseal's revolutionary seamless molded fiberglass bi-part sliding door system is designed, engineered and precision manufactured with over 30 years of experience partnering with leading pharmaceutical companies and architects across the country.

Using cutting-edge technology and exacting criteria for quality sliding doors have surpassed market demands and exceed cGMP, FDA and EMEA requirements. Our quest for uncompromising quality, and our steadfast commitment to meet our customers' ever-changing expectations, is evident in the new state-of-the-art motor/controller, which eliminates external controls and provides infinite adjustability and exceptional reliability.



Shown with optional vision panel

#### EXCEPTIONALLY CLEAN

Totally seamless polyester gel-coat finish, non-porous, non shedding, and non-absorptive panel surface. Finish withstands fingerprints, fading and corroding when using harsh chemicals such as Vesphene, LPH, or SporKlenz. Complete stainless steel track and trolley system. Exceeds CGMP, FDA and EMEA requirements.

#### INTELLIGENT DRIVE

State-of-the art direct drive technology. Microprocessor controls and on-board diagnostics. Maintains established operating parameters while consistently diagnosing potential problems. Fully programmable from floor level without removing shroud. Instantly reverses in both directions, while meeting egress entrapment, UL325 and ANSI A156.

#### ULTIMATE DURABILITY

Exclusive all stainless steel heavy duty rail and trolley assembly. 16 ga. stainless steel side frames and floor hardware. Durable fiberglass reinforced panels.

#### SEAL EFFICIENCY

Utilizing a three-sided vinyl gasket, coupled with a bottom sweep gasket. Unique floor hardware maintains the door panel's position under both positive and negative pressures without compromising the seal. Totally adjustable floor and panel hardware.

#### SECURE

Variety of electronic and mechanical locking options to meets strict FDA/DEA requirements.

#### QUALIFIED

With over 55 years of experience, our professional sales team will ensure your mission-critical requirements, while maintaining our uncompromising dedication to quality and value added service.

## DESIGN AND CONSTRUCTION

### DOOR SIZES

- Manual: up to 8' x 8'
- Powered: up to 10' x 10'
- For additional sizes - consult factory

### PANEL CONSTRUCTION

- 1-3/4" thick structural seamless molded fiberglass panels with polyester gel-coat finish is non-porous, non-shedding, and non-absorptive
- High-density closed cell poured-in-place polyurethane foam core
- 20 ga. stainless steel edge cap for added protection and durability
- Full perimeter gaskets and interlocking center seal
- White color standard (other colors available on request)

### HEADER/RAIL AND SIDE FRAME CONSTRUCTION

- 12 ga. 304 #4 stainless steel header with 3/16" stainless steel rail assembly
- 1/4" thick stainless steel trolley assemblies
- Complete header and rail enclosed with a 16 ga. 304 #4 stainless sloped shroud
- 16 ga. 304 #4 stainless steel side frames with floor hardware attached (nothing mounted into the floor)
- White color standard (other colors available on request)

### PERFORMANCE FEATURES

- Manual Model: automatic close with "hold-open"
- Power Model: A gear-less AC Asynchronous motor continuously maintains peak performance by utilizing an on-board, self-adjusting microprocessor control system. Complete system is programmable from from floor level without removing the shrouds.
- Standard pushplate to open - time delay to close
- Standard circuitry allows door to "reverse upon obstruction" by monitoring both directions of door travel.
- Standard dual side frame mounted reversing photoeyes
- In case of power failure, power doors can be manually operated at any time

### OPTIONS

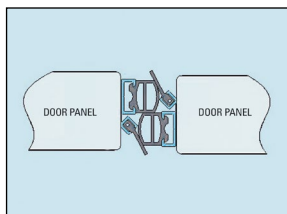
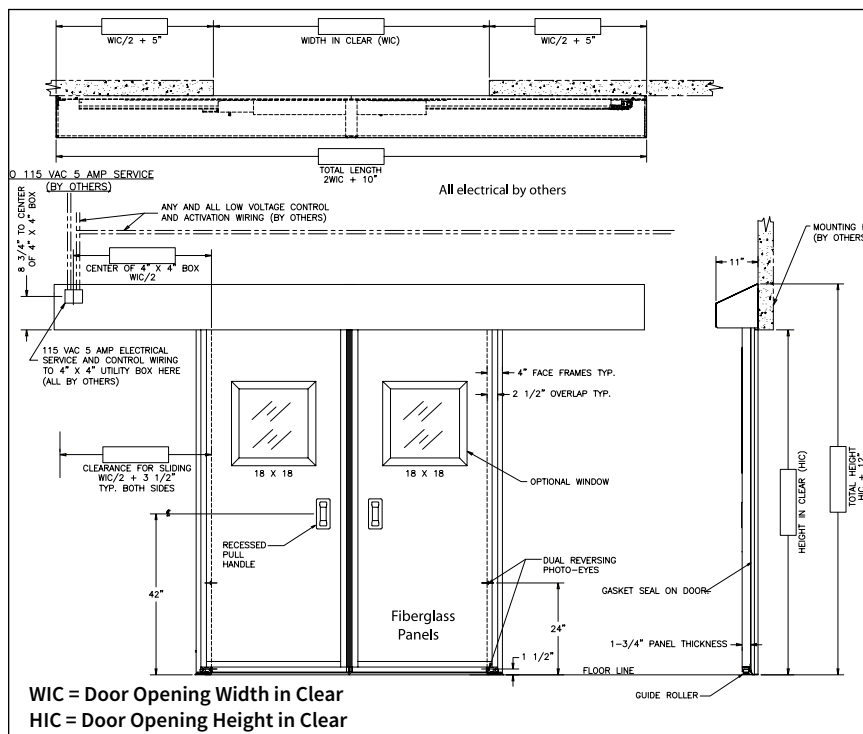
- Vision panel with standard sloped frame
- CleanView® flush vision panel
- 304 or 316 #4 stainless steel clad panel
- Custom color (consult factory)
- Mechanical canebolt lock in door panel

### OPTIONS (POWER MODELS ONLY)

- Activation devices mounted in door panel
- Electronic solenoid lock in header
- Touch-less activation switches
- Custom designed interlocking systems
- Actuators: Variety of activation device available upon request
- Pre-announce to close kit (light/alarm/combo)

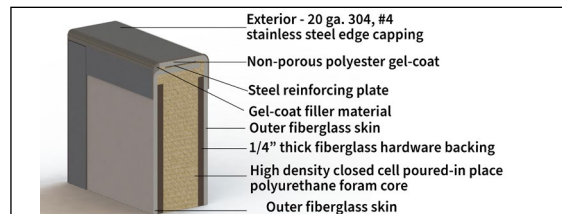
### WARRANTY

- Two year limited warranty on all components



### Bi-Part Sliding Door Center Seal

Unique double interlocking center seal provides a complete seal and prevents panel separation under positive or negative pressures.



### Molded Fiberglass Construction

Our exclusive process utilizing polyester gel-coat, offers a fiberglass door that is truly seamless. Cleanseal fiberglass doors are built to a higher standard so they withstand the harshest conditions and still look great year after year.



### Optional Flush Vision Panel

The CleanView® flush vision panel is the ultimate in clean technology design.



### Seamless Fiberglass Panel

Fully repairable, totally corrosion resistant and 100% non-porous.



### Canebolt Lock

Optional door mounted mechanical lock meets FDA/DEA requirements. (Available with or without inside release)