



# MODEL 220/225

## Single Swinging Seamless Molded Fiberglass Door System

[Model 220 Manual](#) | [Model 225 Power](#)

### THE INDUSTRY'S UNPARALLELED DOOR SYSTEM OF CHOICE

Cleanseal's seamless molded fiberglass swinging door system is designed, engineered and precisely manufactured with over 30 years of experience partnering with leading pharmaceutical companies and architects across the country. With our all inclusive program we can engineer a complete interlock/access control system, packaged with doors and hardware, to ensure flawless installation and start-up.

Using cutting-edge technology and exacting criteria for quality, Excel swinging doors have surpassed market demands and exceed cGMP, FDA and EMEA requirements. Our quest for uncompromising quality, and our steadfast commitment to meet our customers' ever-changing expectations, is evident in our ability to provide a comprehensive single source for their door, hardware and integration needs.



Shown with optional vision panel



#### EXCEPTIONALLY CLEAN

Seamless polyester gel-coat finish. Non-porous, non-shedding, and non-absorptive panel surface. Finish withstands fingerprints, fading, corroding and harsh chemicals such as Vesphene, LPH or SporKlenz. The exclusive mitered corners of the frame are fully welded, through the throat and ground and polished, exceeding cGMP, FDA and EMEA requirements.

#### SEAL EFFICIENCY

Utilizing a frame mounted, three-sided perimeter gasket, coupled with a bottom sweep gasket and panel mounted astragals.

#### SECURE INTERLOCKS

Variety of electronic and mechanical locking options to meet the strict FDA/DEA requirements.

#### TURNKEY SYSTEM

ASI provides a complete door system from panel choice, frame design, hardware selection, and interlocking design to complement any environment. This ensures an uninterrupted process in completing your project by maintaining a single source relationship.

#### SUPERIOR PERFORMANCE

Time-tested, the Excel door series has proven to be the benchmark for the strict clean environment production area worldwide. Over 10,000 door systems installed globally reflects our experience and customer satisfaction.

#### QUALIFIED

With over 55 years of experience, our professional sales team will ensure your mission-critical requirements, while maintaining our uncompromising dedication to quality and value added service.

## DESIGN AND CONSTRUCTION

### DOOR SIZES

- Up to 4' x 9' (For additional sizes - consult factory)

### PANEL CONSTRUCTION

- 1-3/4" thick structural seamless molded fiberglass panel with polyester gel-coat finish, non-porous, non-shedding and non-absorptive
- High-density closed cell poured-in-place polyurethane foam core.
- All hardware locations reinforced with internal backing plates
- 20 ga. stainless steel edge capping for added protection and durability.
- White color standard (other colors available)

### FRAME CONSTRUCTION

- 16 ga., 304 #4 stainless steel fully welded and polished (through frame faces and throat) stainless steel with 20 ga. stainless steel covers
- Available in single or double rabbet construction
- Prepped for a wide variety of hardware options

### HARDWARE

- Grade 1 Architectural hardware standard:
  - Hager BB1191 standard weight stainless steel fully mortised hinges
  - LCN 4041 heavy-duty closer
  - Stainless steel push/pull hardware
  - Frame mounted, three sided bulb type perimeter gasket and bottom sweep gasket

### PERFORMANCE FEATURES

- Manual open with standard spring assist closer
- Power operation utilizing an electromechanical operator, microprocessor controlled in 120 volt, single phase, with mechanical spring close
- Operator completely enclosed within a 16 ga. 304 #4 stainless steel sloped shroud
- Overhead presence sensor to provide threshold and swing slide obstruction detection
- Activation device to open; time delay to close
- In case of power failure, door can be opened manually

### OPTIONS

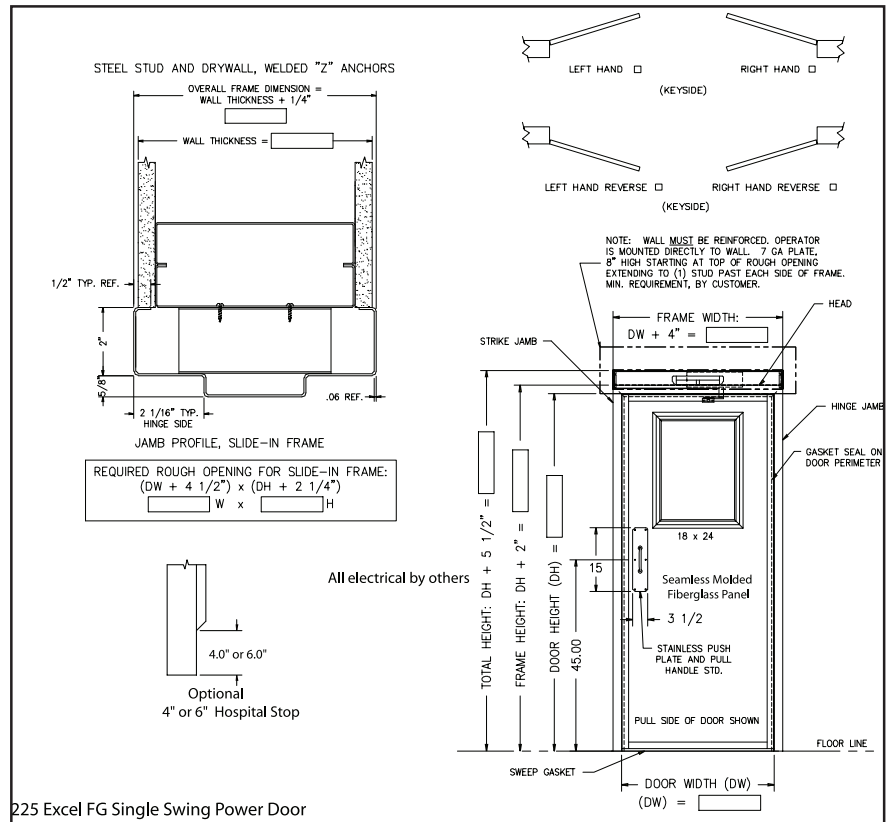
- Vision panel with standard sloped frame
- Cleanview® flush vision panel
- All stainless steel construction available in 316L
- 14 ga. stainless steel frames
- Stainless steel clad panel (Fire rated and non-rated)
- Custom designed interlocking system
- Hospital stops 4" or 6"
- Stainless steel closer cover
- Can provide any major lines and grades of architectural hardware
- Custom color (consult factory)

### OPTIONS (POWER MODELS ONLY)

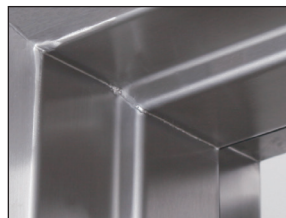
- Touch-less wall-mounted activation switch
- Actuators: Variety of activation devices available

### WARRANTY

- Two year limited warranty on all components

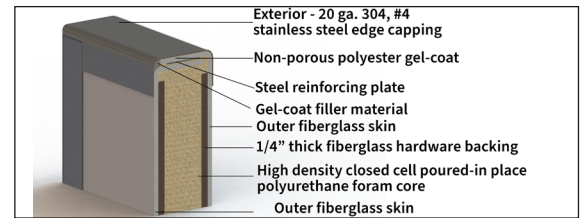


WIC = Door Opening Width in Clear  
HIC = Door Opening Height in Clear



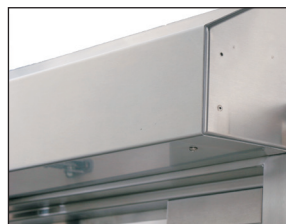
#### Frame Assembly

Fully mitered and completely welded through the throat. Single or double rabbet



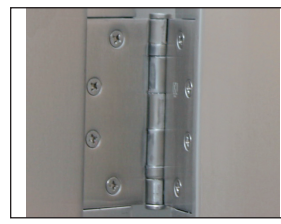
#### Molded Fiberglass Construction

Our exclusive process utilizing polyester gel-coat, offers a fiberglass door that is truly seamless. Cleanseal fiberglass doors are built to a higher standard so they withstand the harshest conditions and still look great year after year.



#### Sloped Shroud for Power Units

For superior cleanliness and aesthetic appeal.



#### Fully Mortised Hinges

(Shown on stainless steel door) Flush mortised hinges provide a clean and smooth finish to the door.



#### Optional Flush Vision Panel

(Shown on stainless steel door) The Cleanview® flush vision panel is the ultimate in clean technology design.