



# MODEL 615F

## High-Speed Freezer Fabric Roll-Up Door

### THE INDUSTRY'S UNPARALLELED DOOR SYSTEM OF CHOICE

Enviro's high speed fabric roll-up door is designed, engineered and precision manufactured with over 40 years of experience partnering with today's leading cold storage companies across the country. The 615F optional insulated fabric roll-up door combines a clean, attractive finish, while maintaining one of the smallest footprints in the industry. With a heavy-duty fabric curtain, high speed, soft bottom edge technology and a simple breakaway system with automatic reset, this door sets the standard for controlled environments.

Using cutting-edge technology and exacting criteria for quality, these doors have surpassed market demands. Our quest for uncompromising quality, and our steadfast commitment to meet our customer's ever-changing expectations, is evident in one of the most durable, personnel friendly, maintenance free roll-up door systems available in today's highly controlled environment marketplace.



(Shown with insulated curtain option)



#### HIGH SPEED

Opening speed of 100" per second the 615F fabric roll up door will provide increased material handling while minimizing air exchange, increasing energy efficiencies. Speed is fully adjustable and allows the user to tailor the door operation to exacting requirements.

#### INTELLIGENT DRIVE

Reliable, low maintenance, high efficiency AC direct drive operator has no clutches or brakes to maintain or replace. Our standard frequency inverter, in conjunction with absolute encoder technology and digital controller, allows for smooth quiet soft start/stop operation. Using flexible inverter technology, the user is allowed to choose from a variety of line side voltages.

#### SEAL EFFICIENCY

Utilizing a "soft seal" (no bottom bar) bottom edge, the curtain molds to your floor's contours. This combined with a unique low profile track that continuously retains the curtain, the 615F stops air infiltration from the ground up. Integrated track seals do not touch fabric curtain during door operation providing a low maintenance design.

#### LOW PROFILE

The 615F fabric roll up door requires only 5-1/2" of side guide clearance making it one of the lowest profile doors in the industry.

#### QUALIFIED

With over 55 years of experience, our professional sales team will ensure your mission-critical requirements, while maintaining our uncompromising dedication to quality and value added service.



## DESIGN AND CONSTRUCTION

### DOOR SIZES

- Up to 15' x 15' (For additional sizes - consult factory)

### PANEL CONSTRUCTION

- Multi-filament PVC coated curtain
- Blue or orange color curtain standard (Other colors available upon request)
- No windknobs or windbars required
- Soft bottom edge - no bottom bar required

### FRAME & SHROUD CONSTRUCTION

- Side guides constructed with structural channels in galvanized steel
- Side frames designed for maximum durability and utilizes a polyethylene guide
- Fully retained curtain along complete vertical edges

### OPERATOR FEATURES

- Adjustable opening speed up to 100"/sec.
- High performance, high efficiency, soft start / soft stop, washdown rated 1 or 2 hp AC electric motor
- Available in 208/230V single phase, or 208/230/460v three phase power
- Absolute encoder controlled - washdown rated
- NEMA 4 rated enclosure with clear view vision

### PERFORMANCE FEATURES

- Breakaway curtain with automatic reset from either direction
- Send and receive reversing photo-eye
- Soft bottom edge with electronic reversing
- Standard pushbutton to open and time delay to close
- Manual motor override for opening without power

### THERMAL PROTECTION

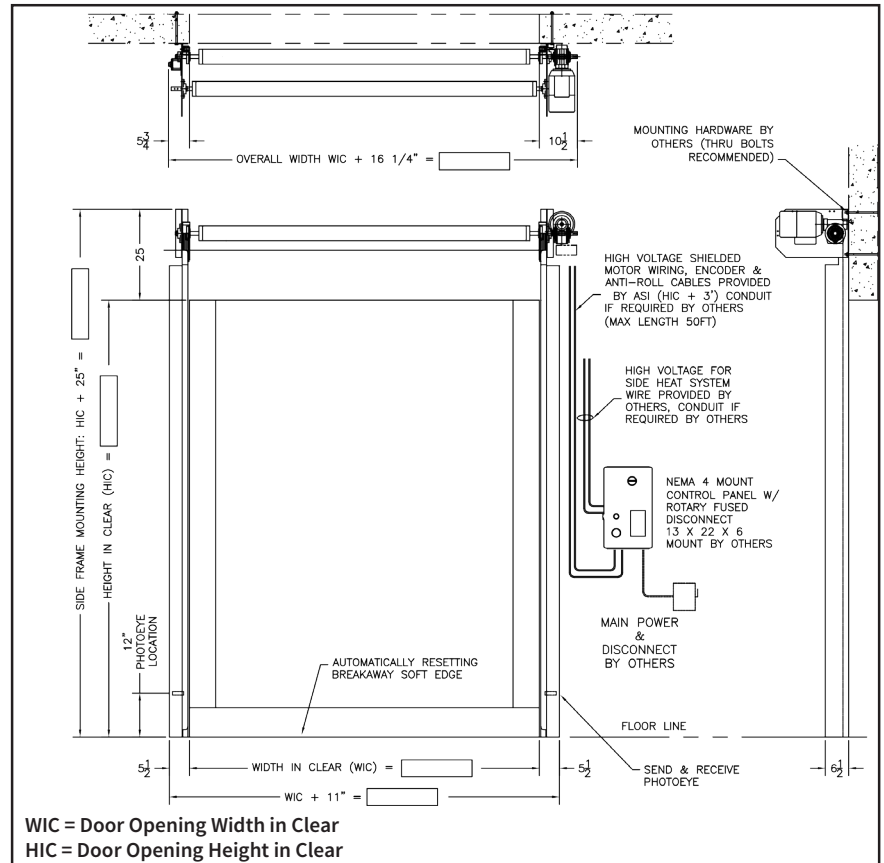
- Optional fully insulated PVC coated curtain
- Polyethylene thermal breaks incorporated into side track
- Standard full horizontal heated lintel seal
- Optional non-heated and heated air circulation system

### OPTIONS

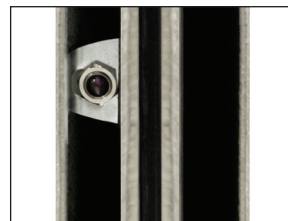
- Pull cords
- Remote mount push buttons
- Additional Photo-eyes - actuator or reversing
- Loop detector
- Motion detector
- Pre-announce to close kit (light/alarm or control)
- Custom designed interlocking system
- Radio control activation-single or multi-channel transmitter
- Stainless steel construction
- Non-heated and heated air circulation systems
- Heat control panel
- Window (15" full width or 24" x 24" sections)
- Insulated curtain (max 15' x 15')
- 10" full width window on insulated curtain

### WARRANTY

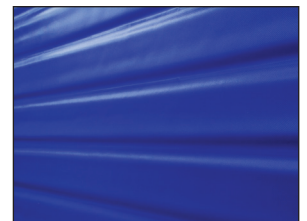
- One year limited warranty on all components



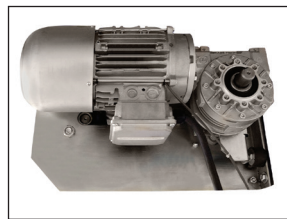
**Soft Bottom Edge**  
The ultimate safety for personnel and provides optimal sealing.



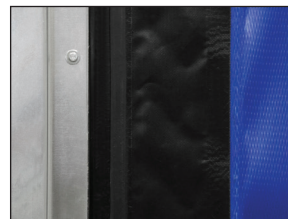
**Photo-Eye**  
Photo-eye interruption, will return to full open position.



**Insulated Curtain**  
Optional insulated PVC coated curtain for thermal protection



**Direct Shaft Drive**  
High speed opening up to 100"/sec. High performance AC drive and absolute encoder controlled.



**Low Profile Track**  
Door required only 5-1/2" of side guide clearance.