



**Iso-Flex Single  
Sliding Impactable  
Cooler/Freezer Door  
MODEL XP 2700**

**PART'S MANUAL**

## Instructions for Ordering

This parts manual is intended to assist in the correct identification of the more commonly replaced parts; covering, generally, all models and styles offered within the marathon pharm. Line. The manual will also help identify obsolete parts, part design changes and current production parts. For more specific parts information, please contact an authorized representative or consult the factory's customer service or engineering departments. Asi doors reserves the right to discontinue any part and make design changes without notice.

### General Instructions for Ordering Door Parts

Accurate information is always necessary to serve you correctly and promptly. Several steps should be followed to determine exactly the parts that are needed.

Refer to the information tag on your door and record the:

1. Door model number
2. Job number
3. Door number
4. Manufacturing date.

Use part numbers referenced in this manual.

If the item is not found in the manual, the product code on the back of the item is helpful.

If your door has no information label, the approximate purchase date is helpful.

Call

**1-800-558-7068**

or visit

**[asidoors.com/parts](https://asidoors.com/parts)**

**to order parts**

Manual Part #: 17A209

# Door Identification

Determining the Job Number, Model and Year of Manufacture of your door is necessary to provide quick and accurate parts identification. The following is a description of labels and their locations.

When ordering parts, specify Job Number, Door Number and Manufacture Date

Manual Doors Product Labels: Power Doors

<b>ASI Doors, Inc.</b>		
MILWAUKEE	WISCONSIN	MADE IN USA
DOOR MODEL	JOB NUMBER	DOOR NUMBER
MFG. DATE	INSPECTED BY	

Figure 52: ID Label - Manual Door

<b>ASI Doors, Inc.</b>		
MILWAUKEE	WISCONSIN	MADE IN USA
DOOR MODEL	JOB NUMBER	DOOR NUMBER
MFG. DATE	INSPECTED BY	
OPERATOR TYPE	MODEL #	WIRING DIAGRAM
HORSEPOWER	VOLTAGE/PHASE	HZ AMPERAGE

Figure 53: ID Label - Power Door

## ID Tag Location

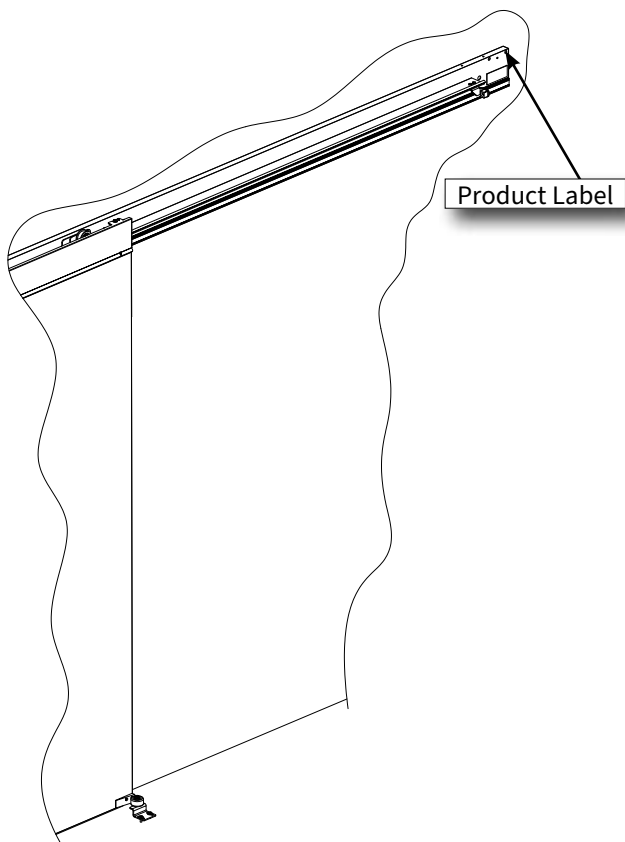


Figure 54: Label Location - Manual Door

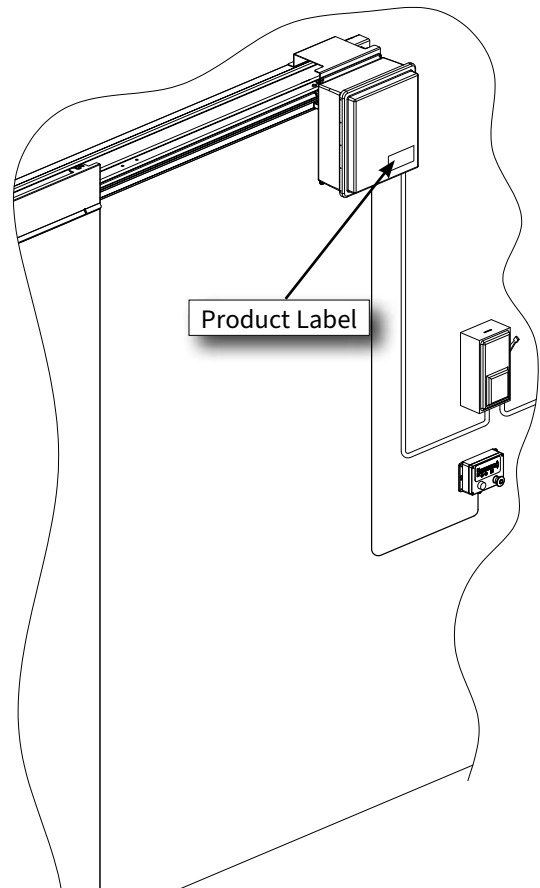
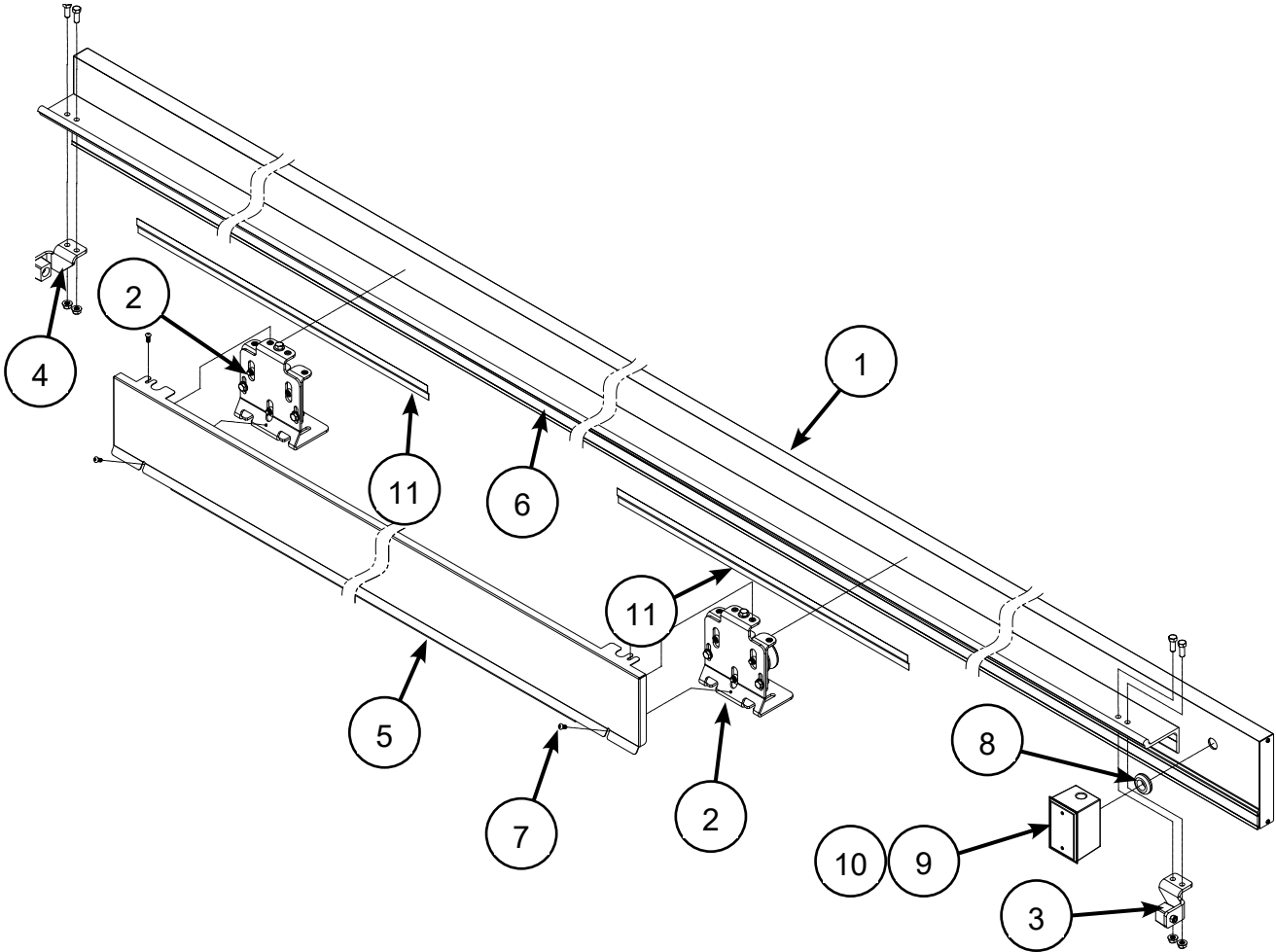


Figure 55: Label Location - Power Door

# Manual Header Assemblies



## NOTE

**Note** views shown are RH assemblies. LH assemblies are the same except components are mirrored from view shown.

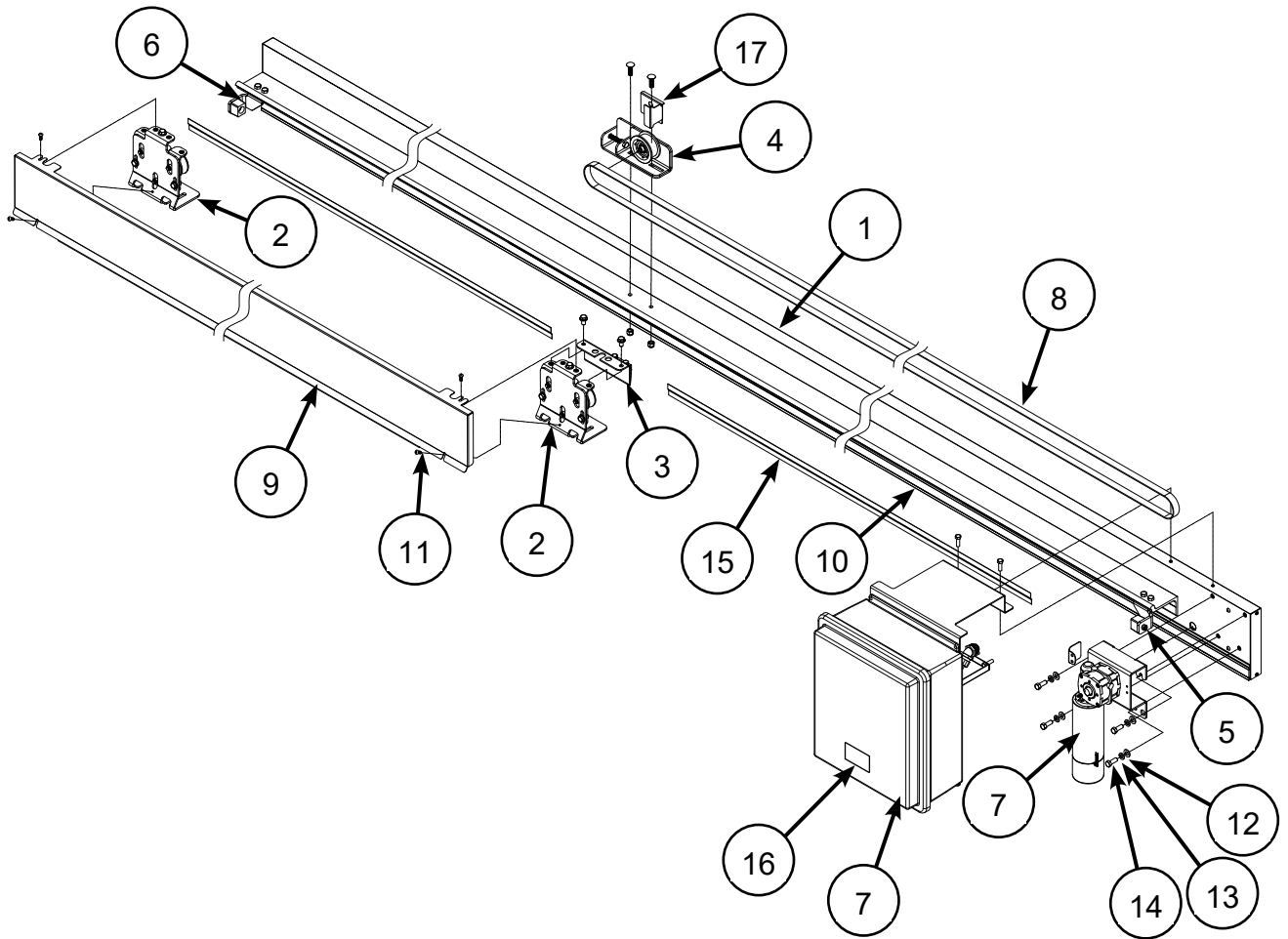
When ordering parts, specify Job Number, Door Number and Manufacture Date

## Manual Header Assemblies Continued

DESCRIPTION	HEADER #
ASM, HEADER, LH SSLD, MAN, XP-2, AL & GV, WIC <=96"	80B0002LVF1
ASM, HEADER, LH SSLD, MAN, XP-2, AL & S/S, WIC <=96"	80B0002LVF2
ASM, HEADER, LH SSLD, MAN, XP-2, AL & GV, WIC > 96"	80B0002LVF3
ASM, HEADER, LH SSLD, MAN, XP-2, AL & S/S, WIC > 96"	80B0002LVF4
ASM, HEADER, RH SSLD, MAN, XP-2, AL & GV, WIC <=96"	80B0002RVF1
ASM, HEADER, RH SSLD, MAN, XP-2, AL & S/S, WIC <=96"	80B0002RVF2
ASM, HEADER, RH SSLD, MAN, XP-2, AL & GV, WIC > 96"	80B0002RVF3
ASM, HEADER, RH SSLD, MAN, XP-2, AL & S/S, WIC > 96"	80B0002RVF4
ASM, HEADER, LH SSLD, MANUAL, S/S	80B0006LV20
ASM, HEADER, RH SSLD, MANUAL, S/S	80B0006RV20

DESCRIPTION	PART #	ITEM #
ASM, HEADER, LH SSLD, MAN, XP-2, AL & GV, WIC <=96"	24B0531LVF1	1
ASM, HEADER, LH SSLD, MAN, XP-2, AL & S/S, WIC <=96"	24B0531LVF2	1
ASM, HEADER, LH SSLD, MAN, XP-2, AL & GV, WIC > 96"	24B0531LVF3	1
ASM, HEADER, LH SSLD, MAN, XP-2, AL & S/S, WIC > 96"	24B0531LVF4	1
ASM, HEADER, RH SSLD, MAN, XP-2, AL & GV, WIC <=96"	24B0531RVF1	1
ASM, HEADER, RH SSLD, MAN, XP-2, AL & S/S, WIC <=96"	24B0531RVF2	1
ASM, HEADER, RH SSLD, MAN, XP-2, AL & GV, WIC > 96"	24B0531RVF3	1
ASM, HEADER, RH SSLD, MAN, XP-2, AL & S/S, WIC > 96"	24B0531RVF4	1
WLDMNT, HEADER, LH SSLD, MANUAL, S/S	28B0365LV20	1
WLDMNT, HEADER, RH SSLD, MANUAL, S/S	28B0365RV20	1
TROLLEY ASM, XP-2, ZN	24B0563NN10	2
TROLLEY ASM, XP-2, S/S	24B0563NN20	2
ASM, END STOP, LH, XP HEADER, ZN	24B0377LN10	3
ASM, END STOP, LH, XP HEADER, S/S	24B0377LN20	3
ASM, END STOP, RH, XP HEADER, ZN	24B0377RN10	4
ASM, END STOP, RH, XP HEADER, S/S	24B0377RN20	4
COVER, SSLD, XP-2, S/S	13B2006NV20	5
COVER, SSLD, XP-2, WHT STUCCO	13B2006NV30	5
STRIP, HDPE, HEADER, (WIC * 2) + 20"	11A0184NN	6
SCREW, 1/4-20 x .625, BU/HD, S/S	41A535	7
GROMMET, .875 ID (FREEZER ONLY)	11A086	8
JUNCTION BOX, WEATHERPROOF, 1-GANG (FREEZER ONLY)	22B029	9
BELL BOX, COVER AND GASKET (FREEZER ONLY)	22A084	10
HEATER COVER, HEADER, XP	13A0473NN	11
LABEL, SAFETY WARNING, MINIMUM DOOR OPENING HEIGHT	17A0296	12

# Power Header Assemblies



DESCRIPTION	HEADER #
ASM, HEADER, RH SSLD, PWR, S/S	80B0005RV20
ASM, HEADER, LH SSLD, PWR, S/S	80B0005LV20
ASM, HEADER, RH SSLD, PWR, ALUM, XP-2, AL & GV, WIC <=96"	80B0001RVF1
ASM, HEADER, RH SSLD, PWR, ALUM, XP-2, AL & S/S, WIC <=96"	80B0001RVF2
ASM, HEADER, RH SSLD, PWR, ALUM, XP-2, AL & GV, WIC > 96"	80B0001RVF3
ASM, HEADER, RH SSLD, PWR, ALUM, XP-2, AL & S/S, WIC > 96"	80B0001RVF4
ASM, HEADER, LH SSLD, PWR, ALUM, XP-2, AL & GV, WIC <=96"	80B0001LVF1
ASM, HEADER, LH SSLD, PWR, ALUM, XP-2, AL & S/S, WIC <=96"	80B0001LVF2
ASM, HEADER, LH SSLD, PWR, ALUM, XP-2, AL & GV, WIC > 96"	80B0001LVF3
ASM, HEADER, LH SSLD, PWR, ALUM, XP-2, AL & S/S, WIC > 96"	80B0001LVF4

# Power Header Assemblies Continued

DESCRIPTION	PART #	ITEM #
ASM, HEADER, RH SSLD, PWR, XP-2, AL & GV, WIC <=96"	24B0530LVF1	1
ASM, HEADER, RH SSLD, PWR, XP-2, AL & S/S, WIC <=96"	24B0530LVF2	1
ASM, HEADER, RH SSLD, PWR, XP-2, AL & GV, WIC > 96"	24B0530LVF3	1
ASM, HEADER, RH SSLD, PWR, XP-2, AL & S/S, WIC > 96"	24B0530LVF4	1
ASM, HEADER, RH SSLD, PWR, XP-2, AL & GV, WIC <=96"	24B0530RVF1	1
ASM, HEADER, RH SSLD, PWR, XP-2, AL & S/S, WIC <=96"	24B0530RVF2	1
ASM, HEADER, RH SSLD, PWR, XP-2, AL & GV, WIC > 96"	24B0530RVF3	1
ASM, HEADER, RH SSLD, PWR, XP-2, AL & S/S, WIC > 96"	24B0530RVF4	1
WLDMNT, HEADER, LH SSLD, PWR, S/S	28B0364LV20	1
WLDMNT, HEADER, RH SSLD, PWR, S/S	28B0364RV20	1
TROLLEY ASM, XP-2, ZN	24B0563NN10	2
TROLLEY ASM, XP-2, S/S	24B0563NN20	2
ASM, BELT BRKT W/CLAMP, UPPER, XP-2, ZN	24B0557NN10	3
ASM, BELT BRKT W/CLAMP, UPPER, XP-2, S/S	24B0557NN20	3
ASM, BELT BRKT W/CLAMP, LOWER, XP-2, ZN	24B0559NN10	3
ASM, BELT BRKT W/CLAMP, LOWER, XP-2, S/S	24B0559NN20	3
ASM, IDLER, XP-2, ZN	24B0536NN10	4
ASM, IDLER, XP-2, S/S	24B0536NN20	4
ASM, END STOP, LH, XP HEADER, ZN	24B0377LN10	5
ASM, END STOP, LH, XP HEADER, S/S	24B0377LN20	5
ASM, END STOP, RH, XP HEADER, ZN	24B0377RN10	6
ASM, END STOP, RH, XP HEADER, S/S	24B0377RN20	6
OPTION, DRIVE & CONTROL	55B0075	7
BELT, DRIVE, HTD-8mm PITCH, 20mm WIDE, BLACK, (WIC * 3) + 42"	50B0073NN	8
COVER, SSLD, XP-2, S/S	13B2006NV20	9
COVER, SSLD, XP-2, WHT STUCCO	13B2006NV30	9
STRIP, HDPE, HEADER, XP-2, (WIC * 2) + 20"	11A0184NN	10
SCREW, 1/4-20 x .625, BU/HD, S/S	41A535	11
WASHER, FLAT, 3/8, STD, S/S	41A203	12
WASHER, LOCK, 3/8, SPLIT, S/S	41A327	13
3/8-16 X 1.000, HHCS, S/S	41A673	14
HEATER COVER, HEADER, XP	13A0473NN	15
LABEL, SAFETY WARNING, MINIMUM DOOR OPENING HEIGHT	17A0296	16
BELT GUARD, IDLER, XP HEADERS (DOORS < 7' 6" HIC ONLY)	13B2497	17

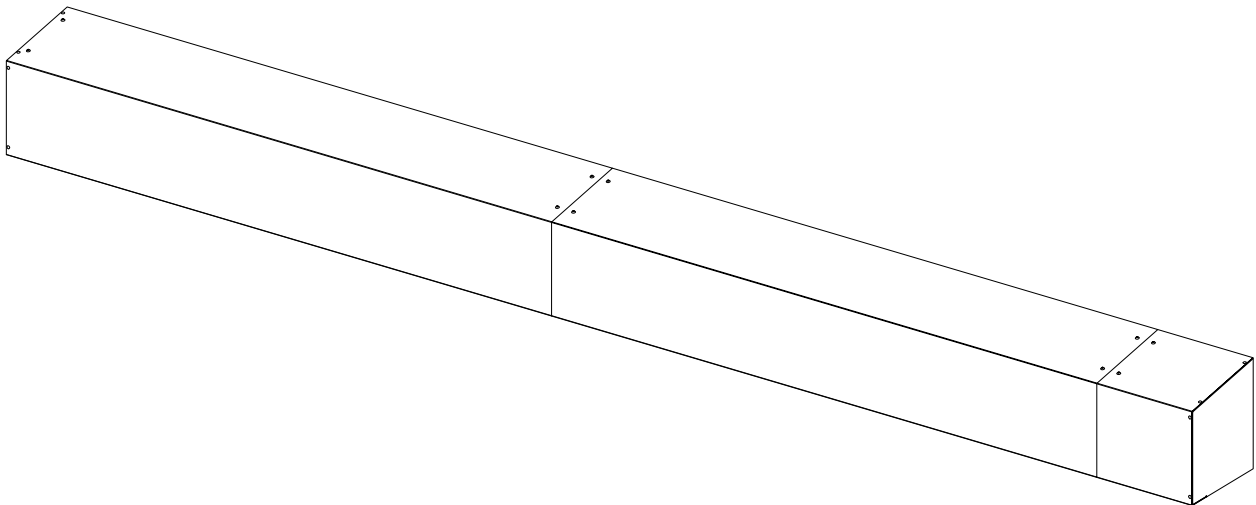
## NOTE

**Note** views shown are RH assemblies. LH assemblies are the same except components are mirrored from view shown.

When ordering parts, specify Job Number, Door Number and Manufacture Date

# Manual Header Shrouds

F16	F15	F14	F13	F12	F11	F10	F09	DESCRIPTION	PART#
-	-	-	-	-	-	-	X	OPTION, SHROUD, XP2, SSLIDE, MAN, LH, WIC<=72", GV	55B0246F09
-	-	-	-	-	-	X	-	OPTION, SHROUD, XP2, SSLIDE, MAN, LH, WIC<=72", S/S	55B0246F10
-	-	-	-	-	X	-	-	OPTION, SHROUD, XP2, SSLIDE, MAN, RH, WIC<=72", GV	55B0246F11
-	-	-	-	X	-	-	-	OPTION, SHROUD, XP2, SSLIDE, MAN, RH, WIC<=72", S/S	55B0246F12
-	-	-	X	-	-	-	-	OPTION, SHROUD, XP2, SSLIDE, MAN, LH, WIC>72", GV	55B0246F13
-	-	X	-	-	-	-	-	OPTION, SHROUD, XP2, SSLIDE, MAN, LH, WIC>72", S/S	55B0246F14
-	X	-	-	-	-	-	-	OPTION, SHROUD, XP2, SSLIDE, MAN, RH, WIC>72", GV	55B0246F15
X	-	-	-	-	-	-	-	OPTION, SHROUD, XP2, SSLIDE, MAN, RH, WIC>72" S/S	55B0246F16
-	-	-	-	-	-	-	1	ASM, SHROUD, XP2, SSLIDE, MAN, LH, WIC<=72", GV	24B0780LV10
-	-	-	-	-	-	1	-	ASM, SHROUD, XP2, SSLIDE, MAN, LH, WIC<=72", S/S	24B0780LV20
-	-	-	-	-	1	-	-	ASM, SHROUD, XP2, SSLIDE, MAN, RH, WIC<=72", GV	24B0780RV10
-	-	-	-	1	-	-	-	ASM, SHROUD, XP2, SSLIDE, MAN, RH, WIC<=72", S/S	24B0780RV20
-	-	-	1	-	-	-	-	ASM, SHROUD, XP2, SSLIDE, MAN, LH, WIC>72", GV	24B0781LV10
-	-	1	-	-	-	-	-	ASM, SHROUD, XP2, SSLIDE, MAN, LH, WIC>72", S/S	24B0781LV20
-	1	-	-	-	-	-	-	ASM, SHROUD, XP2, SSLIDE, MAN, RH, WIC>72", GV	24B0781RV10
1	-	-	-	-	-	-	-	ASM, SHROUD, XP2, SSLIDE, MAN, RH, WIC>72", S/S	24B0781RV20
1	1	1	1	1	1	1	1	SHROUD BRACKET PLACEMENT REFERENCE DWG.	17B0061

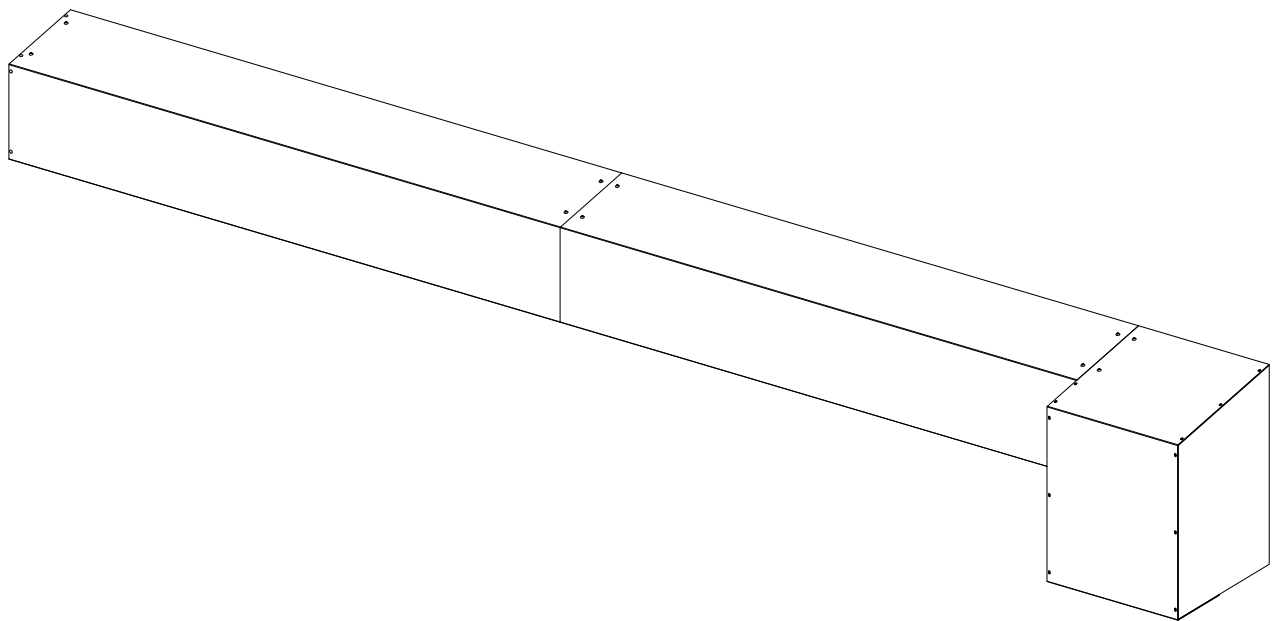


When ordering parts, specify  
Job Number, Door Number and  
Manufacture Date



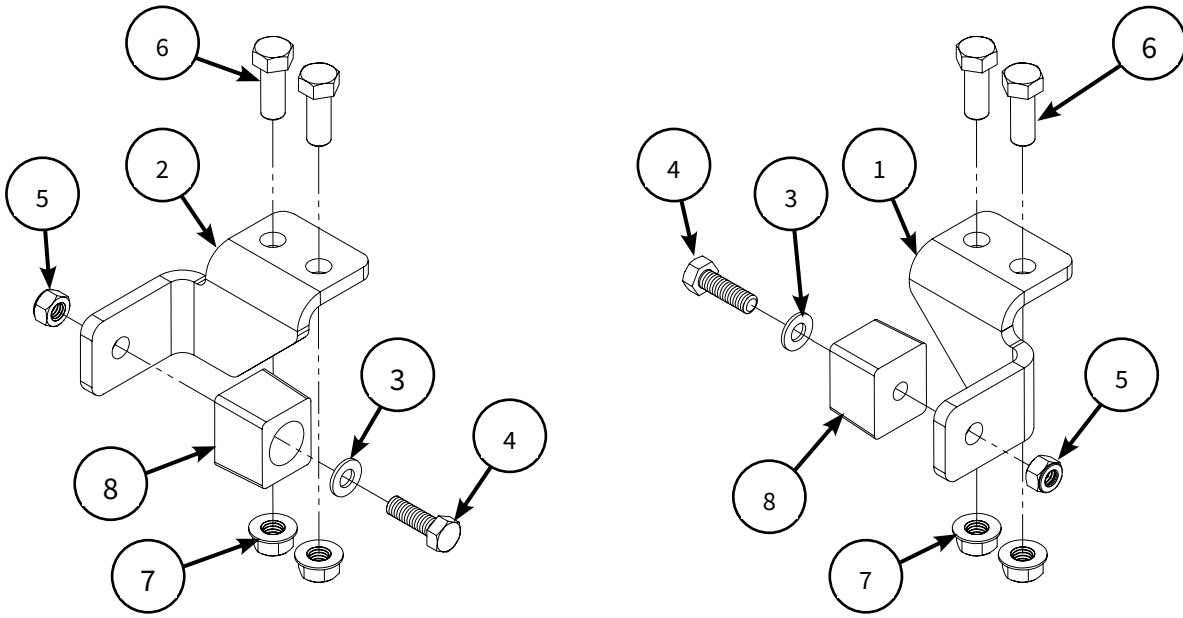
# Power Header Shrouds

F16	F15	F14	F13	F12	F11	F10	F09	DESCRIPTION	PART#
-	-	-	-	-	-	-	X	OPTION, SHROUD, XP2, SSLIDE, PWR, LH, WIC<=72", GV	55B0244F09
-	-	-	-	-	-	X	-	OPTION, SHROUD, XP2, SSLIDE, PWR, LH, WIC<=72", S/S	55B0244F10
-	-	-	-	-	X	-	-	OPTION, SHROUD, XP2, SSLIDE, PWR, RH, WIC<=72", GV	55B0244F11
-	-	-	-	X	-	-	-	OPTION, SHROUD, XP2, SSLIDE, PWR, RH, WIC<=72", S/S	55B0244F12
-	-	-	X	-	-	-	-	OPTION, SHROUD, XP2, SSLIDE, PWR, LH, WIC>72", GV	55B0244F13
-	-	X	-	-	-	-	-	OPTION, SHROUD, XP2, SSLIDE, PWR, LH, WIC>72", S/S	55B0244F14
-	X	-	-	-	-	-	-	OPTION, SHROUD, XP2, SSLIDE, PWR, RH, WIC>72", GV	55B0244F15
X	-	-	-	-	-	-	-	OPTION, SHROUD, XP2, SSLIDE, PWR, RH, WIC>72" S/S	55B0244F16
-	-	-	-	-	-	-	1	ASM, SHROUD, XP2, SSLIDE, PWR, LH, WIC<=72", GV	24B0770LV10
-	-	-	-	-	-	-	1	ASM, SHROUD, XP2, SSLIDE, PWR, LH, WIC<=72", S/S	24B0770LV20
-	-	-	-	-	1	-	-	ASM, SHROUD, XP2, SSLIDE, PWR, RH, WIC<=72", GV	24B0770RV10
-	-	-	-	1	-	-	-	ASM, SHROUD, XP2, SSLIDE, PWR, RH, WIC<=72", S/S	24B0770RV20
-	-	-	1	-	-	-	-	ASM, SHROUD, XP2, SSLIDE, PWR, LH, WIC>72", GV	24B0771LV10
-	-	1	-	-	-	-	-	ASM, SHROUD, XP2, SSLIDE, PWR, LH, WIC>72", S/S	24B0771LV20
-	1	-	-	-	-	-	-	ASM, SHROUD, XP2, SSLIDE, PWR, RH, WIC>72", GV	24B0771RV10
1	-	-	-	-	-	-	-	ASM, SHROUD, XP2, SSLIDE, PWR, RH, WIC>72", S/S	24B0771RV20
1	1	1	1	1	1	1	1	SHROUD BRACKET PLACEMENT REFERENCE DWG.	17B0061



When ordering parts, specify  
Job Number, Door Number and  
Manufacture Date

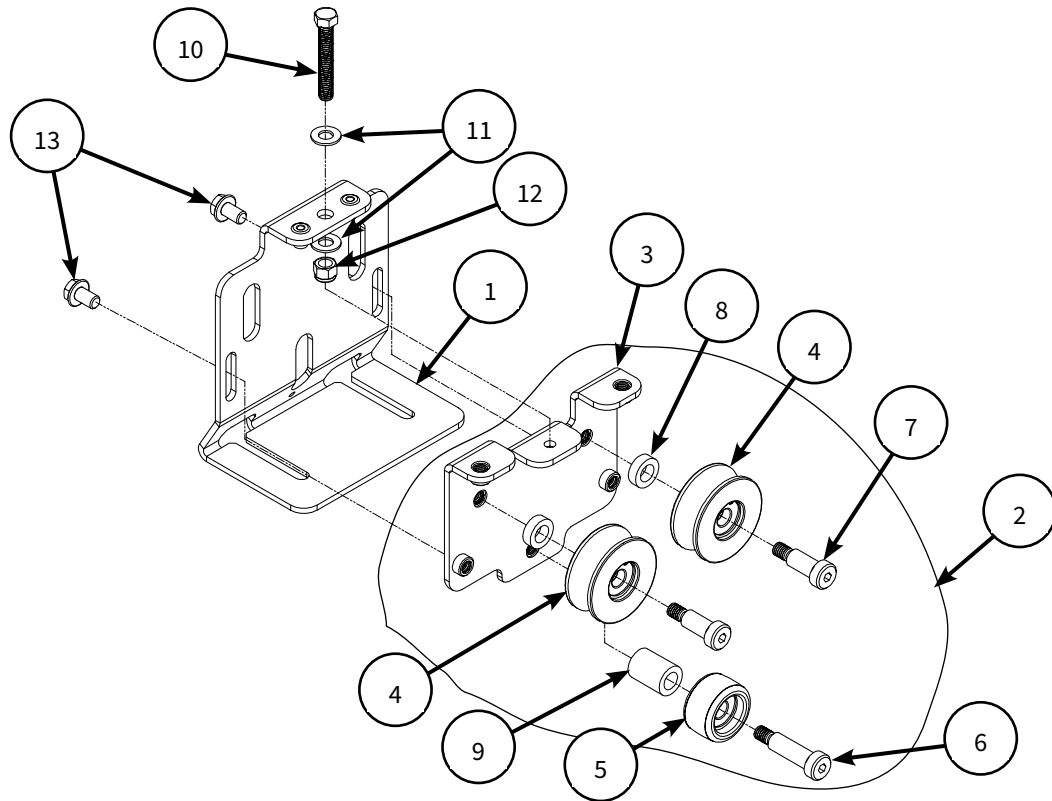
# End Stop Assemblies



RN20	RN10	LN20	LN10	DESCRIPTION	PART #	ITEM #
-	-	-	1	ASM, END STOP, LH, XP HEADER, ZN	24B0377LN10	-
-	-	1	-	ASM, END STOP, LH, XP HEADER, S/S	24B0377LN20	-
-	1	-	-	ASM, END STOP, RH, XP HEADER, ZN	24B0377RN10	-
1	-	-	-	ASM, END STOP, RH, XP HEADER, S/S	24B0377RN20	-
-	-	-	1	END STOP, ROLLER TRUCK, LH, XP HEADER	13B1458LN10	1
-	-	1	-	END STOP, ROLLER TRUCK, LH, XP HEADER	13B1458LN20	1
-	1	-	-	END STOP, ROLLER TRUCK, RH, XP HEADER	13B1458RN10	2
1	-	-	-	END STOP, ROLLER TRUCK, RH, XP HEADER	13B1458RN20	2
-	1	-	1	WASHER, FLAT, 1/4, STANDARD, ZN	41A182	3
1	-	1	-	WASHER, FLAT, 5/16, STANDARD, SS	41A608	3
-	1	-	1	SCREW, 5/16-18 x 1.00, HHCS, ZN	41A061	4
1	-	1	-	SCREW, 5/16-18 x 1.00, HHMS, SS	41A346	4
-	1	-	1	NUT, 5/16-18, HEX, NYLOCK, ZN	41A332	5
1	-	1	-	NUT, 5/16-18, HEX, NYLOCK, SS	41A671	5
-	2	-	2	3/8-16 X 1.000, HHCS, ZN	41A109	6
2	-	2	-	3/8-16 X 1.000, HHCS, SS	41A673	6
-	2	-	2	3/8-16, HEX NUT, WHZLK, ZN	41A216	7
2	-	2	-	3/8-16, HEX NUT, WHZLK, SS	41A710	7
1	1	1	1	RUBBER BUMPER, END STOP	11A054	8

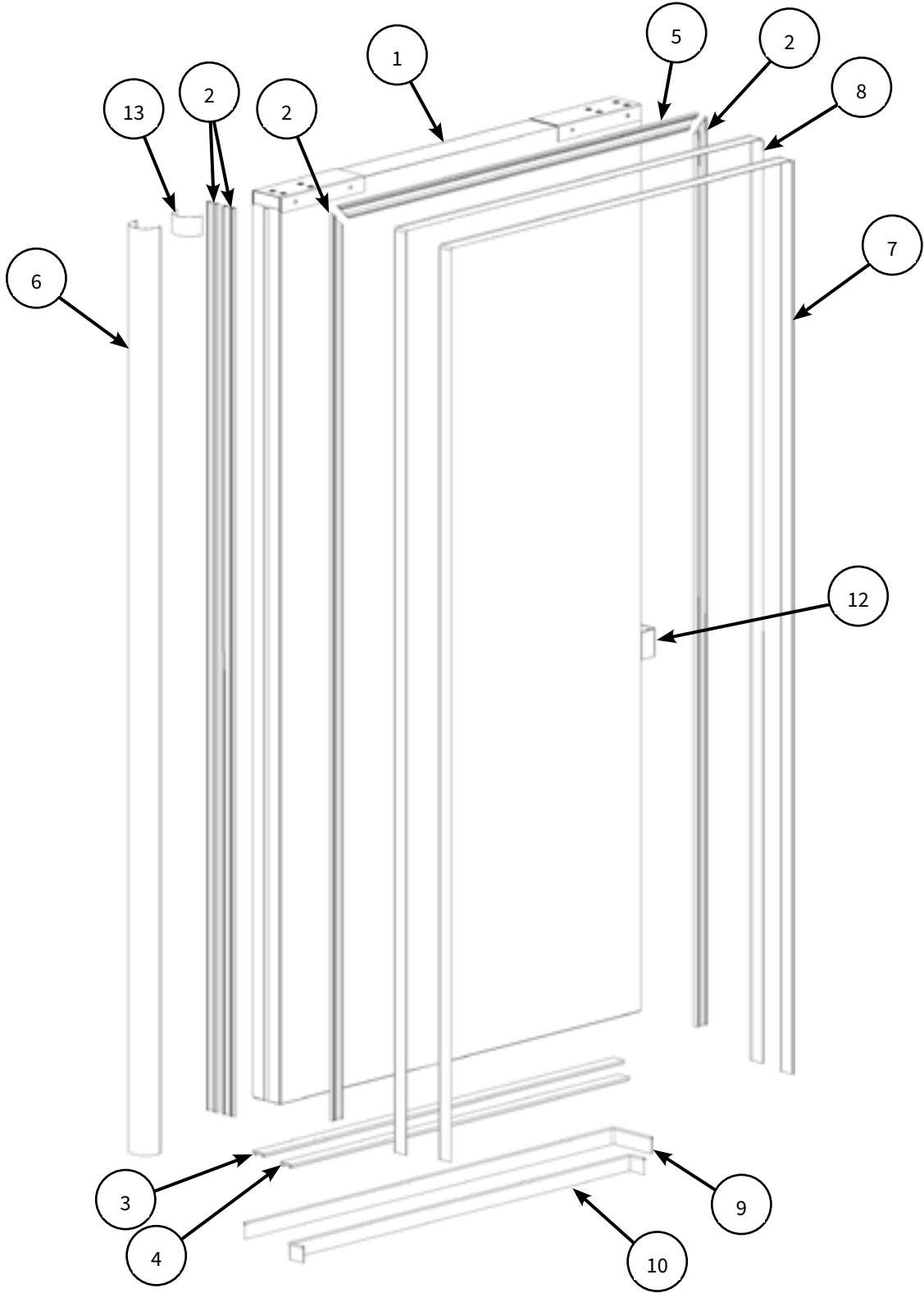
When ordering parts, specify  
Job Number, Door Number and  
Manufacture Date

# Trolley Assemblies



S/S	ZN	DESCRIPTION	PART #	ITEM #
-	1	TROLLEY ASSEMBLY, XP-2, ZN	24B0563NN10	-
1	-	TROLLEY ASSEMBLY, XP-2, S/S	24B0563NN20	-
-	1	ASM BRKT, ADJUSTMENT, TROLLEY, XP-2, ZN	24B0560NN10	1
1	-	ASM BRKT, ADJUSTMENT, TROLLEY, XP-2, S/S	24B0560NN20	1
-	1	ASM, WHEEL BRACKET, TROLLEY, XP-2, ZN	24B0562NN10	2
1	-	ASM, WHEEL BRACKET, TROLLEY, XP-2, S/S	24B0562NN20	2
-	1	ASM, WHEEL BRACKET W/CLINCH NUTS, TROLLEY, XP-2, ZN	24B0561NN10	3
1	-	ASM, WHEEL BRACKET W/CLINCH NUTS, TROLLEY, XP-2, S/S	24B0561NN20	3
2	2	ASSY, WHEEL, TROLLEY	24B0421NN	4
1	1	WHEEL ASSY, LOWER, TROLLEY, BP / SSLD	24B0422NN	5
1	1	SHOULDER SCREW, 1/2 X 1.50, 3/8-16,S/S	41A889	6
2	2	SHOULDER SCREW, 1/2 X 1.00, 3/8-16,S/S	41A888	7
2	2	SPACER, TROLLEY, UPPER	12B0035NN20	8
1	1	SPACER, TROLLEY, LOWER	12B0036NN20	9
1	1	3/8-16 X 2.50 HEX BOLT, FULL THREAD, S/S	41A769	10
2	2	WASHER, FLAT, 3/8, S/S	41A203	11
1	1	NYLON INSERT LOCKNUT, 3/8-16 UNC, S/S	41A770	12
-	2	SCREW, 3/8-16 X 5/8 WHIZ, ZN	41A297	13
2	-	SCREW, 3/8-16 X 5/8 WHIZ, S/S	41A839	13

# Door Panel Assemblies



REPLACEMENT PARTS

## Door Panel Assemblies Continued

LH	RH	DESCRIPTION	PART #	ITEM #
-	1	DOOR ASSEMBLY, ISO-SLIDE, RH	86B0030RV	-
1	-	DOOR ASSEMBLY, ISO-SLIDE, LH	86B0030LV	-
-	1	DOOR PANEL, SINGLE SLIDE, RH	32B0220RV	1
1	-	DOOR PANEL, SINGLE SLIDE, LH	32B0220LV	1
4	4	GASKET RETAINER, VINYL, LEAD EDGE	11A061 (HIC)	2
1	1	GASKET RETAINER, VINYL, BOTTOM, OUTER	11A061 (WIC + 3.5")	3
1	1	GASKET RETAINER, VINYL, BOTTOM, INNER	11A061 (WIC + 0.75")	4
1	1	GASKET RETAINER, VINYL, TOP	11A061 (WIC + 4")	5
1	1	BULB SEAL	15A0129NN (HIC + 2")	6
1	1	HYPALON BLADE GASKET, INNER	15A0130NN (HIC + 0.625") + 2(WIC + 1.25")	7
1	1	HYPALON BLADE GASKET, OUTER	15A0130NN (WIC + 3.5") + 2(HIC + 1.75")	8
1	1	HYPALON BLADE GASKET, BOTTOM, INNER BLADE	15A0130NN (WIC + 5.25")	9
1	1	HYPALON BLADE GASKET, BOTTOM, OUTER BLADE	15A0130NN (WIC + 10.625")	10
1	1	ENVIRO LABEL	17B043-1	11
1	1	BRKT, ISO-FLEX WALL TRACK, DOOR MOUNT	13B1624NN	12
AR	AR	TAB, LEAD EDGE	15A0131NN (QTY. = PANEL HEIGHT, FT)	13

When ordering parts, specify  
Job Number, Door Number and  
Manufacture Date

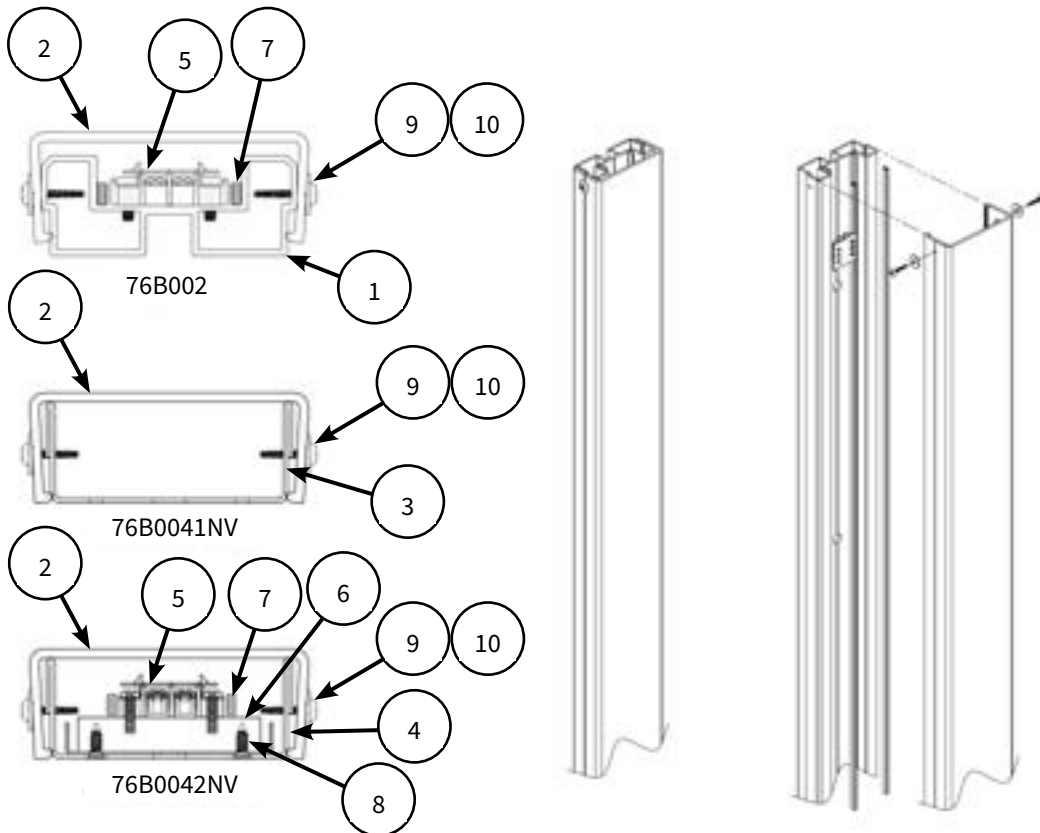
# Face Frame Assemblies

			DESCRIPTION	PART #	ITEM #
-	-	X	ASSY, FACE FRAME, XP-IXP DOOR	76B002 (F1-F4)	-
-	X	-	ASSY, FACE FRAME, COOLER, S/S, XP-IXP DOOR	76B0041NV (F1-F4)	-
X	-	-	ASSY, FACE FRAME, FREEZER, S/S XP-IXP DOOR	76B0042NV (F1-F4)	-
-	-	1	EXTRUSION, FACE FRAME, MACHINED, XP-IXP DOOR	14B090 (F1-F4)	1
1	1	1	EXTRUSION, FACE FRAME COVER, XP DOORS	11B055 (-1,-2,-3,-4)	2
-	A/R	-	BASE, FACE FRAME, XP2, S/S, HIC <= 96	13B2183NV20	3
-	A/R	-	WELDMENT, FACE FRAME, XP2, S/S, HIC > 96	28B0282NV20	3
A/R	-	-	ASM, FACE FRAME, XP2, INNER, S/S, FREEZER, HIC <= 96	24B0628NV20	4
A/R	-	-	ASM, FACE FRAME, XP2, INNER, S/S, FREEZER, HIC > 96	24B0629NV20	4
1	-	A/R	ASM, TERMINAL BLOCK, 2 CIRCUIT (FREEZER ONLY)	24B0553NN	5
1	-	-	BLOCK, TERMINAL MOUNT, FREEZER FRAME (FREEZER ONLY)	11A0204NN50	6
A/R	-	A/R	HEATER WIRE, ALUMINUM CABLE (FREEZER ONLY)	22A069	7
2	-	A/R	SCREW, #8 X .500", PH FHSMS, S/S (FREEZER ONLY)	41A909	8
A/R	A/R	A/R	WASHER, FLAT, STD, #10 (SUPPLIED BY INSTALLER)	N/A	9
A/R	A/R	A/R	SCREW, #10 X .75", TRSMS (SUPPLIED BY INSTALLER)	N/A	10

## NOTE

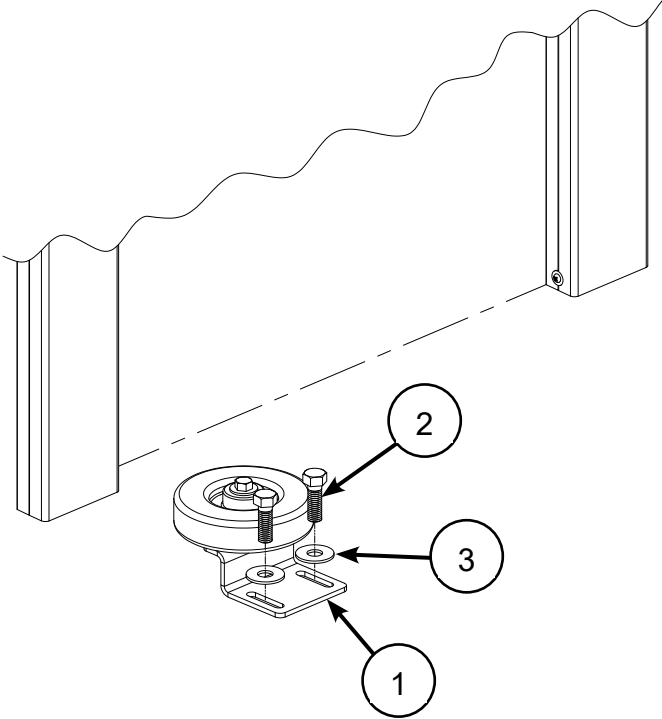
### Note

- (F1-F4) & (-1, -2, -3, -4) P/N'S REFER TO HEIGHT VARIATIONS:  
F1 & -1 = HIC < 96; F2 & -2 = HIC > 96 <= 120; F3 & -3 = HIC > 120 <= 144; F4 & -4 = HIC > 144 <= 180
- P/N'S 11A0204NN50, 24B0553NN, & 41A909 ARE COMPONENTS OF ASSEMBLIES 24B0628NV20 & 24B0629NV20
- LENGTH & EXACT P/N OF HEATER WIRE (22A069) DETERMINED BY HIC OF DOOR. CONSULT ASI PARTS DEPT. FOR SPECIFIC P/N'S AND SPECIFICATIONS.



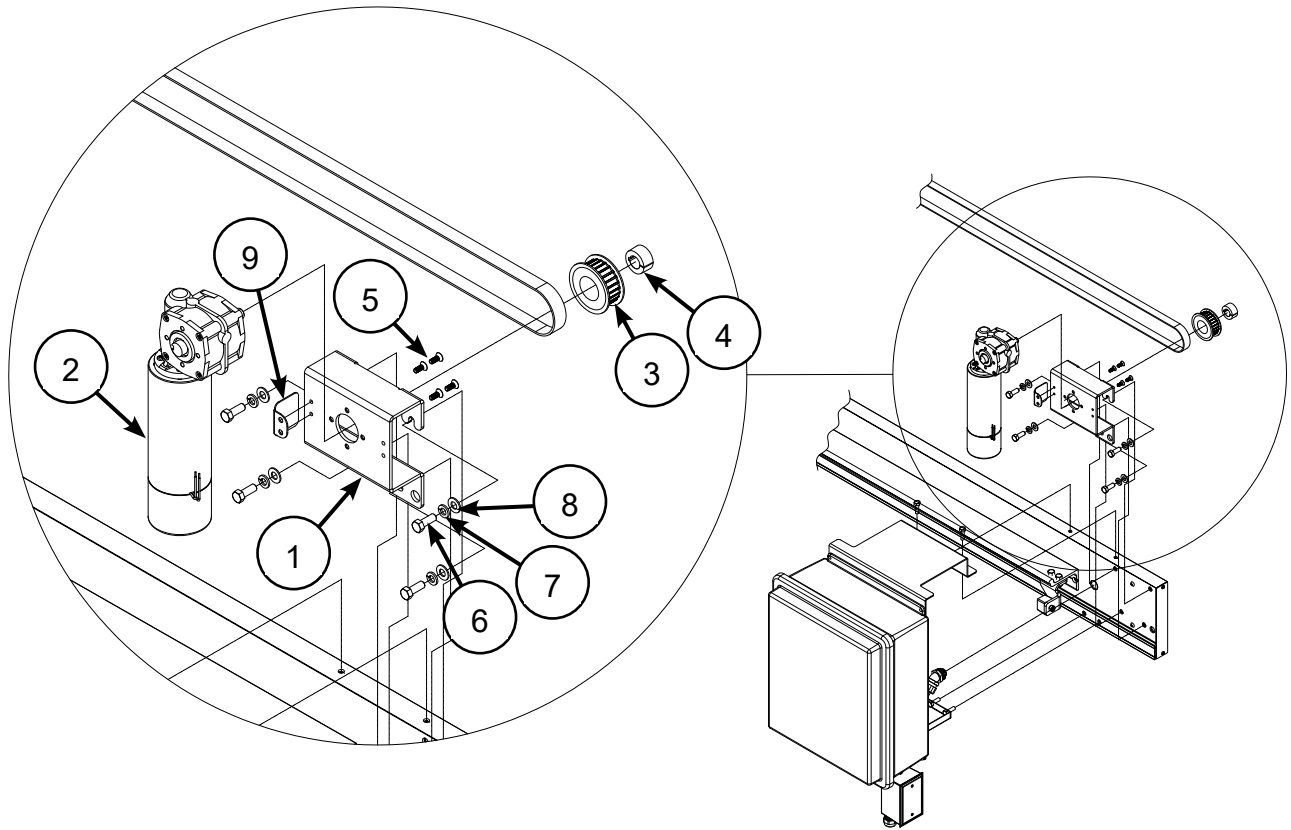
# Floor Hardware

S/S	ZN	DESCRIPTION	PART #	ITEM #
-	1	ASM, ROLLER GUIDE, LEAD EDGE, XP DOOR, ZN	24B274F1	1
1	-	ASM, ROLLER GUIDE, LEAD EDGE, XP DOOR, S/S	24B274F2	1
-	2	BOLT OR ANCHOR, 3/8-16, ZN (SUPPLIED BY INSTALLER)	-	2
2	-	BOLT OR ANCHOR, 3/8-16, S/S (SUPPLIED BY INSTALLER)	-	2
-	2	WASHER, FLAT, 3/8", ZN (SUPPLIED BY INSTALLER)	-	3
2	-	WASHER, FLAT, 3/8", S/S (SUPPLIED BY INSTALLER)	-	3



When ordering parts, specify  
Job Number, Door Number and  
Manufacture Date

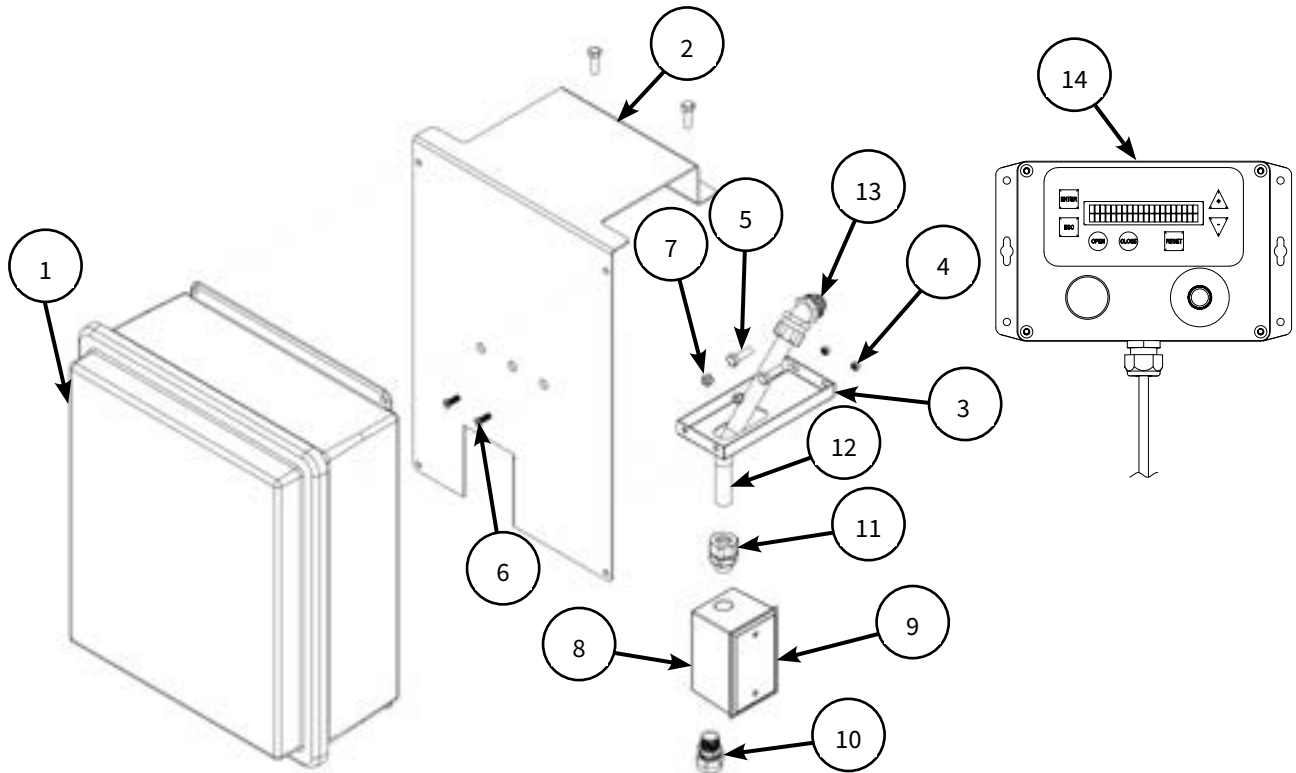
# Drive Assembly



LH DRIVE, STAINLESS	LH DRIVE, ZINC	RH DRIVE, STAINLESS	RH DRIVE, ZINC	PART #	DESCRIPTION	ITEM #
-	-	-	1	24B0564RN10	ASM, DRIVE, RH DC DRIVE, ZN	-
-	-	1	-	24B0564RN20	ASM, DRIVE, RH DC DRIVE, STAINLESS	-
-	1	-	-	24B0564LN10	ASM, DRIVE, LH DC DRIVE, ZN	-
1	-	-	-	24B0564LN20	ASM, DRIVE, LH DC DRIVE, STAINLESS	-
-	1	-	1	13B1983NN10	MOUNT, DC DRIVE, ZN	1
1	-	1	-	13B1983NN20	MOUNT, DC DRIVE, STAINLESS	1
1	1	1	1	23B0069NN	GEARMOTOR, SGF120-B14	2
-	1	-	1	50B0077	SPROCKET, TAPER BUSHED, TL22-8M-20-1008 (STEEL)	3
1	-	1	-	50B0078	SPROCKET, TAPER BUSHED, TL22-8M-20-1008SS (STAINLESS)	3
-	1	-	1	50B0075NN	BUSHING, TAPER LOCK, #1008-20MM, (STEEL)	4
1	-	1	-	50B0076NN	BUSHING, TAPER LOCK, #1008-20MM, (STAINLESS)	4
4	4	4	4	41A891	SCREW, M6 X 1 X 16mm FSHCS, CLASS 10.9, ALLOY STEEL	5
4	4	4	4	41A673	3/8-16 X 1.000, HHCS, SS	6
4	4	4	4	41A327	WASHER, LOCK, 3/8, REG, SPLIT, SS	7
4	4	4	4	41A203	WASHER, FLAT, 3/8, SS	8
AR	AR	AR	AR	13B2498	BELT GUARD, DRIVE, XP HEADERS (DOORS < 7' 6" HIC ONLY)	9



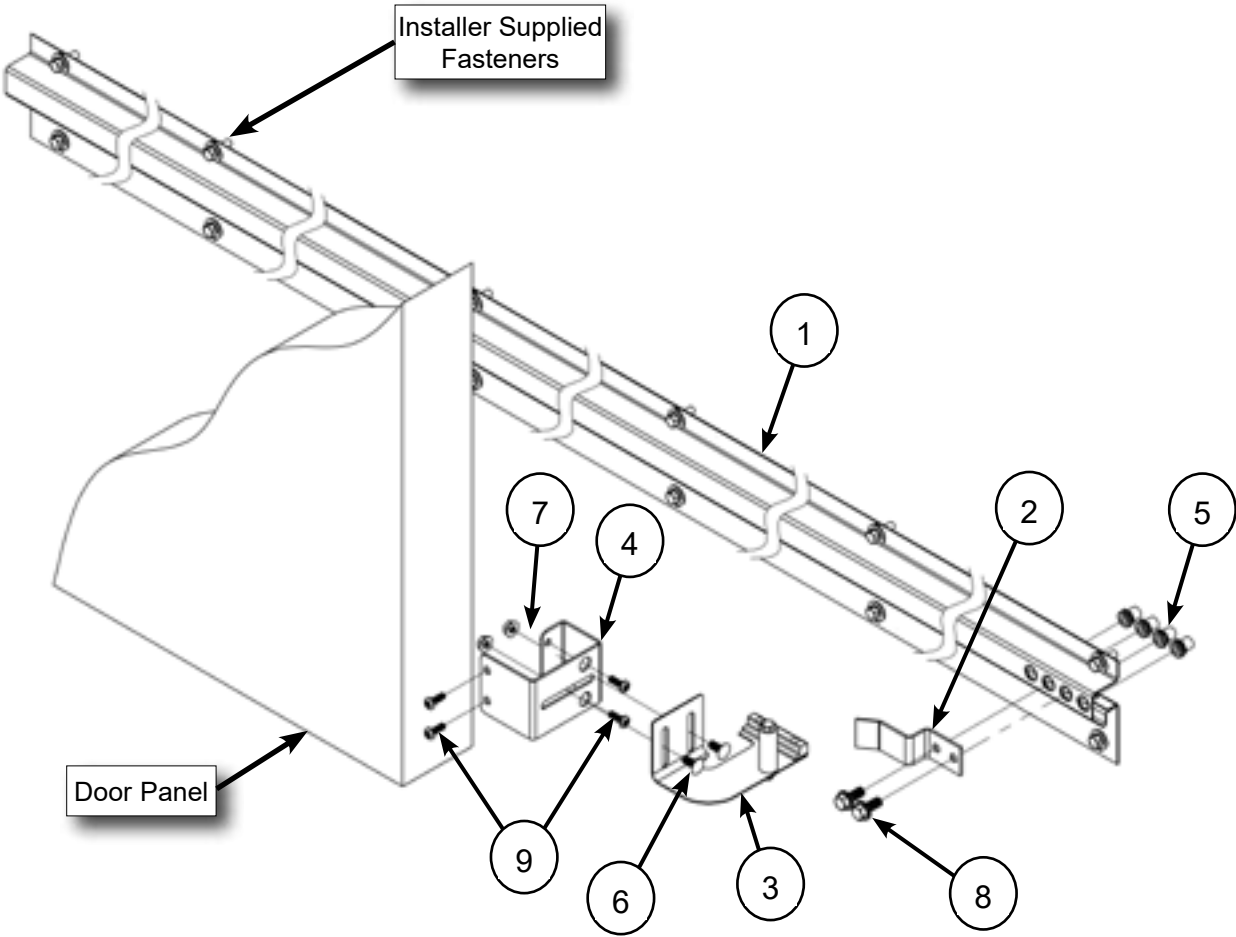
# Control Panel Assembly



460V, S/S	460V, GALV	115/230V, S/S	115/230V, GALV	PART #	DESCRIPTION	ITEM #
-	-	-	X	24B0565NN10	ASM, MOUNT, CONTROL, DC DRIVE, 115/230V, GALV.	-
-	-	X	-	24B0565NN20	ASM, MOUNT, CONTROL, DC DRIVE, 115/230V, STAINLESS	-
-	X	-	-	24B0574NN10	ASM, MOUNT, CONTROL, DC DRIVE, 460V, GALV.	-
X	-	-	-	24B0574NN20	ASM, MOUNT, CONTROL, DC DRIVE, 460V, STAINLESS	-
-	-	1	1	See ID Label	ASM, CONTROL PANEL, DC CARD, 115/230V	1
1	1	-	-	See ID Label	ASM, CONTROL PANEL, DC CARD, 460V	1
-	1	-	1	13B1996NN10	BRACKET, UPPER, CONTROL, XP-2, GALV.	2
1	-	1	-	13B1996NN20	BRACKET, UPPER, CONTROL, XP-2, STAINLESS	2
-	1	-	1	13B1991NN10	CONTROL SUPPORT, DC DRIVE, GALV	3
1	-	1	-	13B1991NN20	CONTROL SUPPORT, DC DRIVE, SS	3
4	4	4	4	41A671	NUT, 5/16-18, HEX, NYLOCK, SS	4
4	4	4	4	41A345	SCREW, 5/16-18 x 1.00, HHCS, STAINLESS	5
2	2	2	2	41A657	SCREW, 1/4-20 X .750, PHL FHMS, SS	6
2	2	2	2	41A639	NYLON INSERT LOCKNUT, 1/4-20 UNC	7
A/R	A/R	A/R	A/R	22B029	JUNCTION BOX, WEATHERPROOF, 1-GANG (FREEZERS ONLY)	8
A/R	A/R	A/R	A/R	22A084	BELL BOX, COVER AND GASKET (FREEZERS ONLY)	9
A/R	A/R	A/R	A/R	23A0454	CONNECTOR, CORD GRIP, .312-.375 (FREEZERS ONLY)	10
A/R	A/R	A/R	A/R	22A169	FITTING, LIQUIDTIGHT, 0° (FREEZERS ONLY)	11
A/R	A/R	A/R	A/R	22A072	CONDUIT, 1/2" FLEX, LIQUID TIGHT (FREEZERS ONLY)	12
A/R	A/R	A/R	A/R	22A073	FITTING, LIQUIDTIGHT, 45° (FREEZERS ONLY)	13
1	1	1	1	24B0575	ASM, REMOTE CONTROL STATION, DC DRIVE	14

When ordering parts, specify  
Job Number, Door Number and  
Manufacture Date

# Wall Track Assemblies



## NOTE

**Note** fasteners for mounting Wall Track assemblies to wall are NOT provided by ASI.

## Wall Track Assemblies Continued

F4	F3	F2	F1	DESCRIPTION	PART #	ITEM
-	-	-	1	ASM, WALL TRACK, S/SLD, XP DOORS, GALVANIZED, RH	24B0573F1	-
-	-	1	-	ASM, WALL TRACK, S/SLD, XP DOORS, STAINLESS, RH	24B0573F2	-
-	1	-	-	ASM, WALL TRACK, S/SLD, XP DOORS, GALVANIZED, LH	24B0573F3	-
1	-	-	-	ASM, WALL TRACK, S/SLD, XP DOORS, STAINLESS, LH	24B0573F4	-
-	-	-	1	WLDMT, WALL TRACK S/SLD, XP DOORS, RH, GALV	28B251F1	1
-	-	1	-	WLDMT, WALL TRACK S/SLD, XP DOORS, RH, S/S	28B251F2	1
-	1	-	-	WLDMT, WALL TRACK S/SLD, XP DOORS, LH, GALV	28B251F3	1
1	-	-	-	WLDMT, WALL TRACK S/SLD, XP DOORS, LH, S/S	28B251F4	1
1	1	1	1	BRACKET, DOOR RETURN, S/S	13B911	2
-	-	1	1	ASSY, DETENT BRACKET W/GUIDE BLOCK, RH	24B170F1	3
1	1	-	-	ASSY, DETENT BRACKET W/GUIDE BLOCK, LH	24B170F2	3
-	1	-	1	BRKT, XP WALL TRACK, DOOR MOUNT, GALVANIZED	13B2015NN10	4
1	-	1	-	BRKT, XP WALL TRACK, DOOR MOUNT, STAINLESS	13B2015NN20	4
4	4	4	4	INSERT, HEX, 3/8-16, GRIP RANGE .027-.150	41A788	5
-	2	-	2	BOLT, 5/16-18 X .75 CARRIAGE BOLT, ZN	41A343	6
2	-	2	-	BOLT, 5/16-18 X .75 CARRIAGE BOLT, S/S	41A344	6
-	2	-	2	NUT, 5/16 WHIZLOCK, ZN	41A033	7
2	-	2	-	NUT, 5/16 WHIZLOCK, SS	41A712	7
-	2	-	2	SCREW, 3/8 X 1.00 HEX HEAD, WHIZLOCK, ZN	41A218	8
2	-	2	-	SCREW, 3/8 X 1.00 HEX HEAD, WHIZLOCK, SS	41A793	8
-	4	-	4	SCREW, 1/4-20 x .750, SL PHMS, ZN	41A489	9
4	-	4	-	SCREW, 1/4-20 x 1.00, PH PHMS, S/S	41A250	9

When ordering parts, specify  
Job Number, Door Number and  
Manufacture Date

# Heat System & Kick Plate Options

## Heat System Option (Freezer)

55B0070F1 - OPTION, HEAT SYSTEM, FREEZER, SINGLE SLIDE		
DESCRIPTION	PART #	QTY
GROMMET, .875 ID	11A086	2
COVER PLATE, SINGLE HOLE, FOAMED PANEL	13B1942NN	1
COVER PLATE, COOLER OPTION, FOAMED PANEL	13B1966NN	1
BUSHING, SNAP, HEYCO# 2053	21A221	2
WIRE, 16GA, WHITE, 600V	22A030-1	AR
WIRE, 16GA, GREEN, 600V	22A030-2	AR
WIRE, 16GA, ORANGE, 600V	22A030-3	AR
WIRE, 16GA, BLACK, 600V	22A030-4	AR
WIRE, 16GA, PURPLE, 600V	22A030-8	AR
LUG, RING, 14-16 AWG, #8	22A043	4
CONNECTOR, CORD GRIP, .312-.375	22A0454	2
HEATER WIRE, ALUMINUM CABLE	22A069	AR (SEE NOTE 1)
CABLE TIE, TY-RAP, 3.5" LONG	22A109-1	AR
BASE MOUNTING, CABLE TIE	22A218	AR
QUICK DISCONNECT TERMINAL, FEMALE, INSULATED, .187 Wd	22B0014NN	8
POLYOLEFIN TUBING, 3M 41875	22B0015NN	14
JUNCTION BOX, WEATHERPROOF, 1-GANG	22B029	2
BELL BOX, COVER AND GASKET	22B084	2
CABLE, SOOW, 18/3	23A005	AR, WIC + 36"
ASM, TERMINAL BLOCK, 2 CIRCUIT	24B0553NN	2

### NOTE

**Note** Length required is calculated based on WIC & HIC of door.

## Kick Plate Options

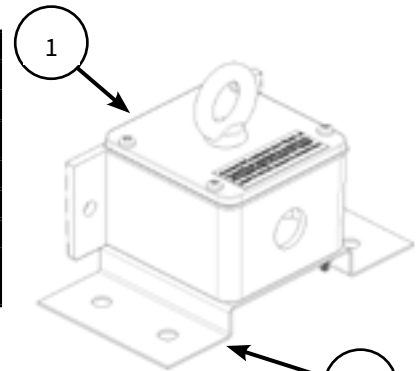
F6	F5	F4	F3	F2	F1	PART #	DESCRIPTION
					1	55B0046F1	KICKPLATE, SINGLE SLIDE, 12" STAINLESS, INSIDE
				1		55B0046F2	KICKPLATE, SINGLE SLIDE, 12" STAINLESS, OUTSIDE
			1			55B0046F3	KICKPLATE, SINGLE SLIDE, 36" STAINLESS, INSIDE
		1				55B0046F4	KICKPLATE, SINGLE SLIDE, 36" STAINLESS, OUTSIDE
	1					55B0046F5	KICKPLATE, SINGLE SLIDE, 36" HDPE, INSIDE
1						55B0046F6	KICKPLATE, SINGLE SLIDE, 36" HDPE, OUTSIDE
					1	13B1577NV20	KICKPLATE, SINGLE SLIDE, 12" STAINLESS, INSIDE
				1		13B1578NV20	KICKPLATE, SINGLE SLIDE, 12" STAINLESS, OUTSIDE
			1			13B1579NV20	KICKPLATE, SINGLE SLIDE, 36" STAINLESS, INSIDE
		1				13B1580NV20	KICKPLATE, SINGLE SLIDE, 36" STAINLESS, OUTSIDE
	1					11B0071NV50	KICKPLATE, SINGLE SLIDE, 36" HDPE, INSIDE
1						11B0072NV50	KICKPLATE, SINGLE SLIDE, 36" HDPE, OUTSIDE

When ordering parts, specify  
Job Number, Door Number and  
Manufacture Date

# Miscellaneous Options

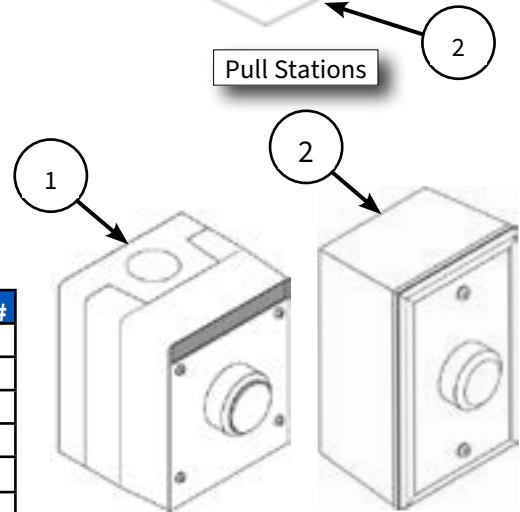
## Pull Station Options

F2	F1	DESCRIPTION	PART #	ITEM #
-	X	ASM, PULL STATION & BRACKET, UNHEATED	24C507F1	-
X	-	ASM, PULL STATION & BRACKET, HEATED	24C507F2	-
-	1	ASM, PULL SWITCH, CEILING, UNHEATED	24B102F1	1
1	-	ASM, PULL SWITCH, CEILING, HEATED	24B102F2	1
1	1	BRACKET, PULL SWITCH MOUNT	13B641	2
1	1	INSTALL GUIDE, OPT DEVICES, DC CONTROLLER	17A0298	-



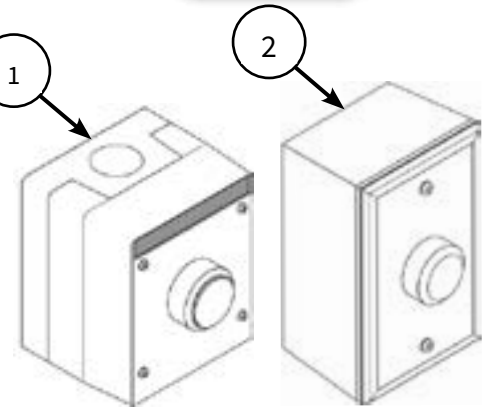
## Push Button Options

DESCRIPTION	PART #	ITEM #
PUSH BUTTON STATION, UN-HEATED	24B029F1	1
PUSH BUTTON STATION, HEATED	24B029F2	2
INSTALL GUIDE, OPT DEVICES, DC CONTROLLER	17A0298	-



## Motion Detector Options

DESCRIPTION	PART #	ITEM #
MOTION DETECTOR, FALCON	23A284	-
PRESENCE SENSOR, BEA IS-40-P	23A102	-
MOTION AND PRESENCE SENSOR, BEA IS-40	23A101	-
ADJUSTABLE SENSOR MOUNTING BRACKET	22A112	-
PROGRAMMING REMOTE	23A285	-
INSTALL GUIDE, OPT DEVICES, DC CONTROLLER	17A0298	-



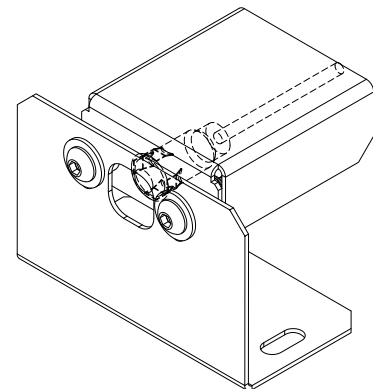
## Radio Control System Options

DESCRIPTION	PART #	ITEM #
TRANSMITTER, RADIO CONTROL, 1 CHANNEL	23A253	-
TRANSMITTER, RADIO CONTROL, 2 CHANNEL	23A255	-
RECEIVER, RADIO CONTROL, 1 CHANNEL	23A252	-
RECEIVER, RADIO CONTROL, 2 CHANNEL	23A254	-
INSTALL GUIDE, OPT DEVICES, DC CONTROLLER	17A0298	-

Push Buttons

## Photoeye Options

F2	F1	DESCRIPTION	PART #
-	X	ASM, P/E MOUNT, TRANSMITTER	24B0867F1
X	-	ASM, P/E MOUNT, RECEIVER	24B0867F2
-	1	PHOTOEYE, TRANSMITTER	23B0159
1	-	PHOTOEYE, RECEIVER	23B0160
1	1	INSTALL GUIDE, OPT DEVICES, DC CONTROLLER	17A0298



Photoeyes

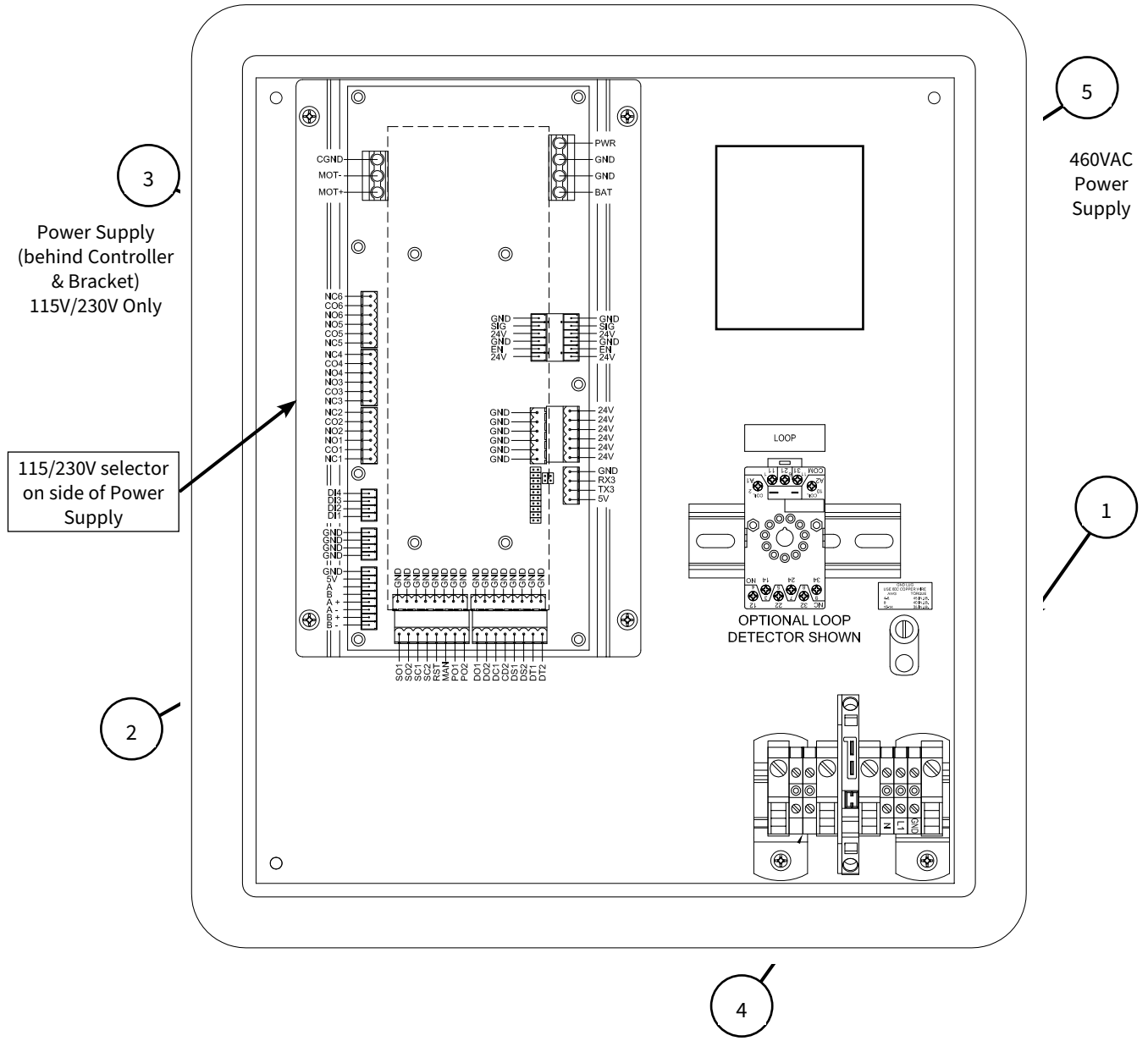
## Loop Detector Options

DESCRIPTION	PART #	ITEM #
LOOP DETECTOR, 24 VAC	23A019	-
WIRE, 14 GA., BLACK, 7 STRAND #XHHW	22A085	-
EMBEDDING SEALER	23A160	-
LOOP DETECTOR INSTALLATION GUIDE	17C174	-
INSTALL GUIDE, OPT DEVICES, DC CONTROLLER	17A0298	-

When ordering parts, specify Job Number, Door Number and Manufacture Date

# Control Panel

DESCRIPTION	PART #	ITEM #
ENCLOSURE, 16 X 14, F/G	23A250	1
CONTROLLER, DC	23A0494	2
POWER SUPPLY, DC, 450W, 115/230-24VDC	23B0130	3
FUSE, BLADE TYPE, FAST ACTING, ATO, 20A	22A286-20	4
POWER SUPPLY, DC, 460VAC / 24VDC	23B0131	5



REPLACEMENT PARTS



**OPEN UP TO WHAT'S POSSIBLE**



**asidoors.com**