



**Fabric Roll-Up  
MODEL 515**

**PART'S MANUAL**

## Instructions for Ordering

This parts manual is intended to assist in the correct identification of the more commonly replaced parts; covering, generally, all models and styles offered within the marathon pharm. Line. The manual will also help identify obsolete parts, part design changes and current production parts. For more specific parts information, please contact an authorized representative or consult the factory's customer service or engineering departments. Asi doors reserves the right to discontinue any part and make design changes without notice.

### General Instructions for Ordering Door Parts

Accurate information is always necessary to serve you correctly and promptly. Several steps should be followed to determine exactly the parts that are needed.

Refer to the information tag on your door and record the:

1. Door model number
2. Job number
3. Door number
4. Manufacturing date.

Use part numbers referenced in this manual.

If the item is not found in the manual, the product code on the back of the item is helpful.

If your door has no information label, the approximate purchase date is helpful.

Call  
**1-800-558-7068**  
or visit  
**asidoors.com/parts**  
to order parts

Manual Part #: 17B066

## Mechanical Service Parts List

Item #	Part #	Description	Qty
1	24A0105NV10	Drive drum assembly, with shafts, steel	1
1	24A0105NV20	Drive drum assembly, with shafts, stainless	1
2	24A0107NN10	Bearing, drum, steel	2
2	24A0107NN20	Bearing, drum, stainless	2
3	23A0404	Motor, gear reducer, encoder 1 hp (pre-2015)	AR
3	23A0405	Motor, gear reducer, encoder 2 hp (pre-2015)	AR
3	23A0448	Motor, gear reducer, 1 HP (2015 & later)	AR
3	23A0449	Motor, gear reducer, 2 HP (2015 & later)	AR
4	23A0406	Cable, motor (per ft) (Not Shown)	1
5	23A0400	Encoder (inside motor cover - Pre-2015)	AR
5	23A0442	Encoder (reducer mount - 2015 & later)	AR
6	23A0401	Cable, encoder (per ft) (pre-2015)	AR
6	23A0443	Cable, encoder, threaded x 5 meter (Not Shown)(2015 & later)	AR
6	23A0444	Cable, encoder, threaded x 7 meter (Not Shown) (2015 & later)	AR
6	23A0445	Cable, encoder, threaded x 10 meter (Not Shown) (2015 & later)	AR
6	23A0446	Cable, encoder, threaded x 20 meter (Not Shown) (2015 & later)	AR
6	23A0447	Cable, encoder, threaded x 25 meter (Not Shown) (2015 & later)	AR
7	23A002	Anti-roll switch with bracket - stainless	1
8	23A0403	Cable, anti-roll switch (per ft) (Not Shown)	1
9	24A0122LV	Inner Guide Assembly, LH	1
10	24A0122RV	Inner Guide Assembly, RH	1
11	24A0104NN	Re-introduction Assembly, Model 515	2
12	13B1735LV10	Cover, Face Frame, LH, 515 Roll-Up, HIC <= 120", Galvanized	1
12	13B1735LV20	Cover, Face Frame, LH, 515 Roll-Up, HIC <= 120", Stainless	1
12	13B1735LV31	Cover, Face Frame, LH, 515 Roll-Up, HIC <= 120", Smooth White	1
13	13B1737LV10	Cover, Face Frame, Upper LH, 515 Roll-Up, HIC > 120", Galvanized	1
13	13B1737LV20	Cover, Face Frame, Upper LH, 515 Roll-Up, HIC > 120", Stainless	1
13	13B1737LV31	Cover, Face Frame, Upper LH, 515 Roll-Up, HIC > 120", Smooth White	1
14	13B1736LN10	Cover, Face Frame, Lower LH, 515 Roll-Up, HIC > 120", Galvanized	1
14	13B1736LN20	Cover, Face Frame, Lower LH, 515 Roll-Up, HIC > 120", Stainless	1
14	13B1736LN31	Cover, Face Frame, Lower LH, 515 Roll-Up, HIC > 120", Smooth White	1
15	13B1735RV10	Cover, Face Frame, RH, 515 Roll-Up, HIC <= 120", Galvanized	1
15	13B1735RV20	Cover, Face Frame, RH, 515 Roll-Up, HIC <= 120", Stainless	1
15	13B1735RV31	Cover, Face Frame, RH, 515 Roll-Up, HIC <= 120", Smooth White	1
16	13B1737RV10	Cover, Face Frame, Upper RH, 515 Roll-Up, HIC > 120", Galvanized	1
16	13B1737RV20	Cover, Face Frame, Upper RH, 515 Roll-Up, HIC > 120", Stainless	1
16	13B1737RV31	Cover, Face Frame, Upper RH, 515 Roll-Up, HIC > 120", Smooth White	1
17	13B1736RN10	Cover, Face Frame, Lower RH, 515 Roll-Up, HIC > 120", Galvanized	1
17	13B1736RN20	Cover, Face Frame, Lower RH, 515 Roll-Up, HIC > 120", Stainless	1
17	13B1736RN31	Cover, Face Frame, Lower RH, 515 Roll-Up, HIC > 120", Smooth White	1

**When ordering parts, specify  
Job Number, Door Number  
and Manufacture Date**

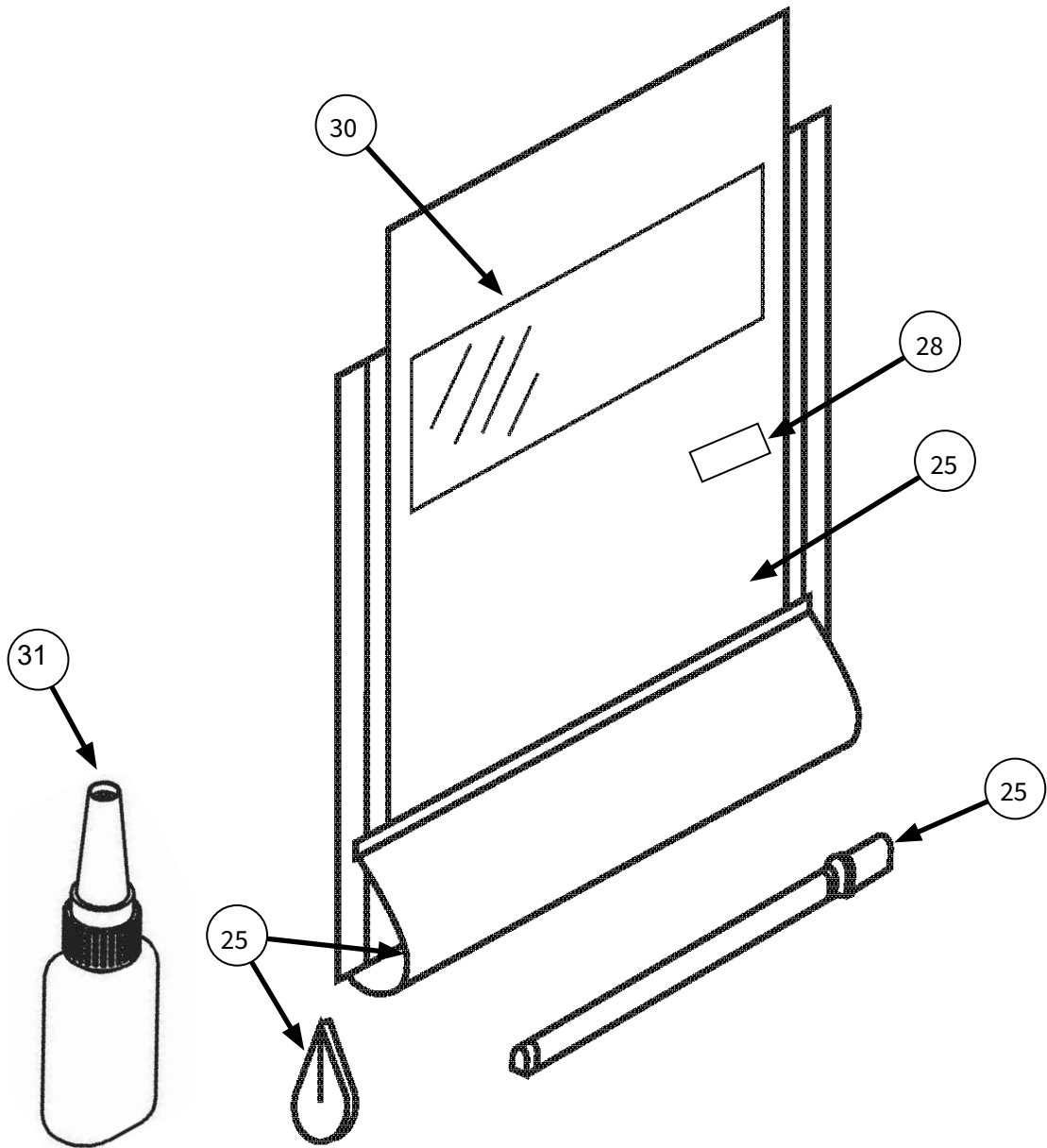
## Mechanical Service Parts List Continued

Item #	Part #	Description	Qty
18	24B0383NV10	Spreader Assembly, 515, WIC <= 120", Galvanized	1
18	24B0383NV20	Spreader Assembly, 515, WIC <= 120", Stainless	1
18	24B0383NV31	Spreader Assembly, 515, WIC <= 106", Smooth White	1
19	13B1711NV10	Spreader, Lower, 515, WIC <= 120", Galvanized	1
19	13B1711NV20	Spreader, Lower, 515, WIC <= 120", Stainless	1
20	13B1723NV10	Spreader Cover, 515, WIC <= 120", Galvanized	1
20	13B1723NV20	Spreader Cover, 515, WIC <= 120", Stainless	1
20	13B1723NV31	Spreader Cover, 515, WIC <= 106", Smooth White	1
21	24B0394NV10	Spreader Assembly, 515, WIC > 120", Galvanized	1
21	24B0394NV20	Spreader Assembly, 515, WIC > 120", Stainless	1
21	24B0394NV31	Spreader Assembly, 515, WIC > 106", Smooth White	1
22	13B1545NV10	Spreader, Lower, 515, WIC > 120", Galvanized	2
22	13B1545NV20	Spreader, Lower, 515, WIC > 120", Stainless	2
23	13B1543NV10	Spreader Cover, Center, 515, WIC > 120", Galvanized	1
23	13B1543NV20	Spreader Cover, Center, 515, WIC > 120", Stainless	1
23	13B1543NV31	Spreader Cover, Center, 515, WIC > 106", Smooth White	1
24	13B1544NV10	Spreader Cover, Outer, 515, WIC > 120", Galvanized	2
24	13B1544NV20	Spreader Cover, Outer, 515, WIC > 120", Stainless	2
24	13B1544NV31	Spreader Cover, Outer, 515, WIC > 106", Smooth White	2
25	24B0379LV10	Shroud Assembly, 1 Pc., 515, LH Drive, WIC <= 120", Galvanized	1
25	24B0379LV20	Shroud Assembly, 1 Pc., 515, LH Drive, WIC <= 120", Stainless	1
25	24B0379LV31	Shroud Assembly, 1 Pc., 515, LH Drive, WIC <= 106", Smooth White	1
25	24B0379RV10	Shroud Assembly, 1 Pc., 515, RH Drive, WIC <= 120", Galvanized	1
25	24B0379RV20	Shroud Assembly, 1 Pc., 515, RH Drive, WIC <= 120", Stainless	1
25	24B0379RV31	Shroud Assembly, 1 Pc., 515, RH Drive, WIC <= 106", Smooth White	1
26	24B0384LV10	Shroud Assembly, 2 Pc., 515, LH Drive, WIC > 120", Galvanized	1
26	24B0384LV20	Shroud Assembly, 2 Pc., 515, LH Drive, WIC > 120", Stainless	1
26	24B0384LV31	Shroud Assembly, 2 Pc., 515, LH Drive, WIC > 106", Smooth White	1
26	24B0384RV10	Shroud Assembly, 2 Pc., 515, RH Drive, WIC > 120", Galvanized	1
26	24B0384RV20	Shroud Assembly, 2 Pc., 515, RH Drive, WIC > 120", Stainless	1
26	24B0384RV31	Shroud Assembly, 2 Pc., 515, RH Drive, WIC > 106", Smooth White	1
27	13B1720NN10	Side Cover, Shroud, 515, Galvanized	1
27	13B1720NN20	Side Cover, Shroud, 515, Stainless	1
27	13B1720NN31	Side Cover, Shroud, 515, Smooth White	1
28	13B1738NN10	Shroud Retainer, Galvanized	A/R
29	24A0117NV	Asm, Curtain, 515 Roll-Up Door	1
30	16B0052NV	Window, Roll-Up Door, PVC, 28" H Per Sq Ft	1
30	16B0053NN	Window, Roll-Up Door, PVC, 24" x 24"	1
31	24A0114LV	Curtain edge repair, 515, LH (requires returning curtain to factory-shipping extra)	-
32	24A0114RV	Curtain edge repair, 515, RH (requires returning curtain to factory-shipping extra)	-
33	05A0030NN	Spare patch material - (Note color needed - White standard)	-
34	10A0041NN	Loctite adhesive for spare patch material	-
35	50A0174NN	6MM_Allen Wrench - (For manual operation of door)	-
36	50A0175NN	Teeth, Replacement, Panel Edge, 515	1

Consult factory for any part not listed, and for any questions on replacement parts.

# Service Parts - Door Curtain

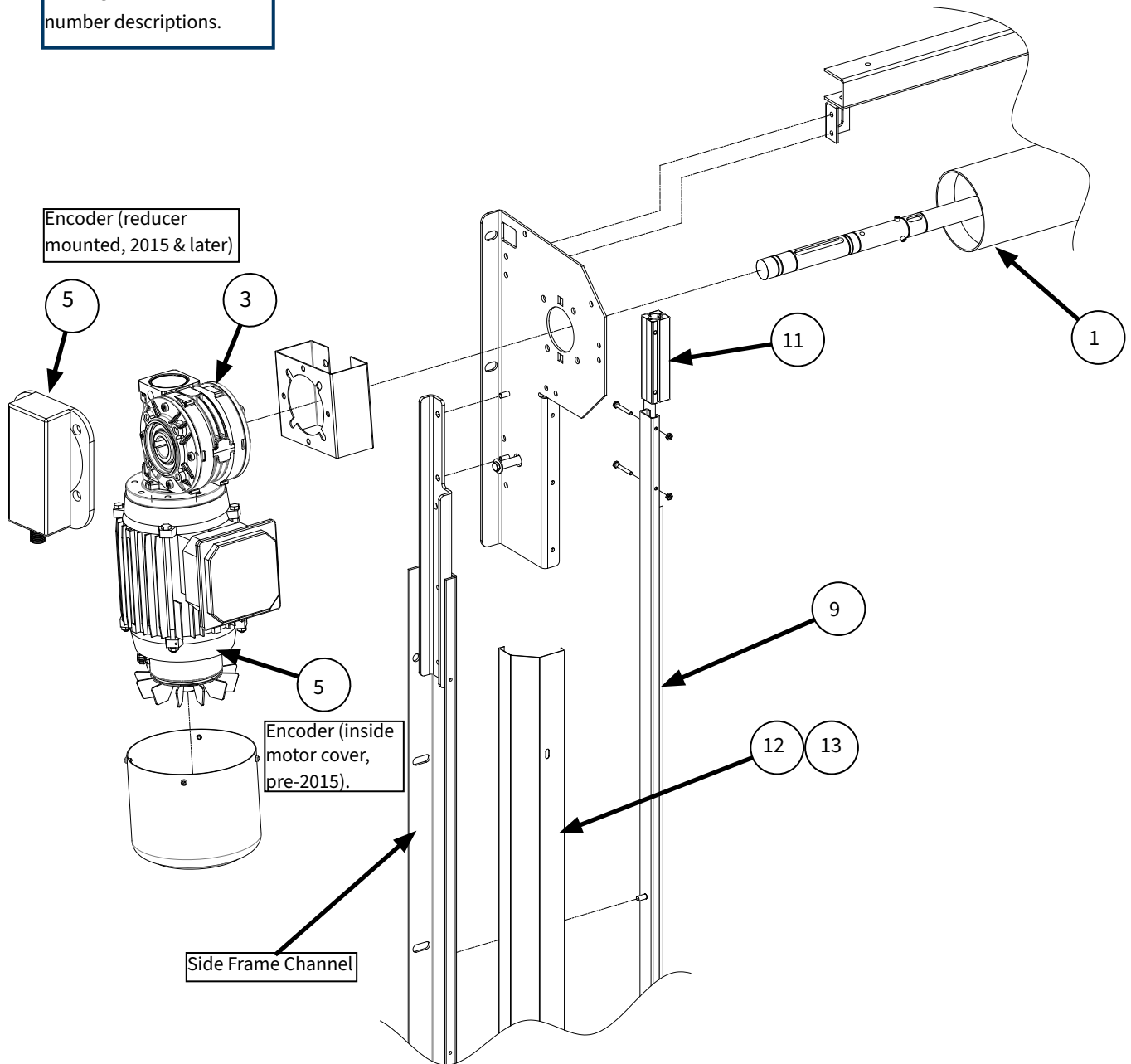
See page 40 & 41 for part number descriptions.



**When ordering parts, specify  
Job Number, Door Number and  
Manufacture Date**

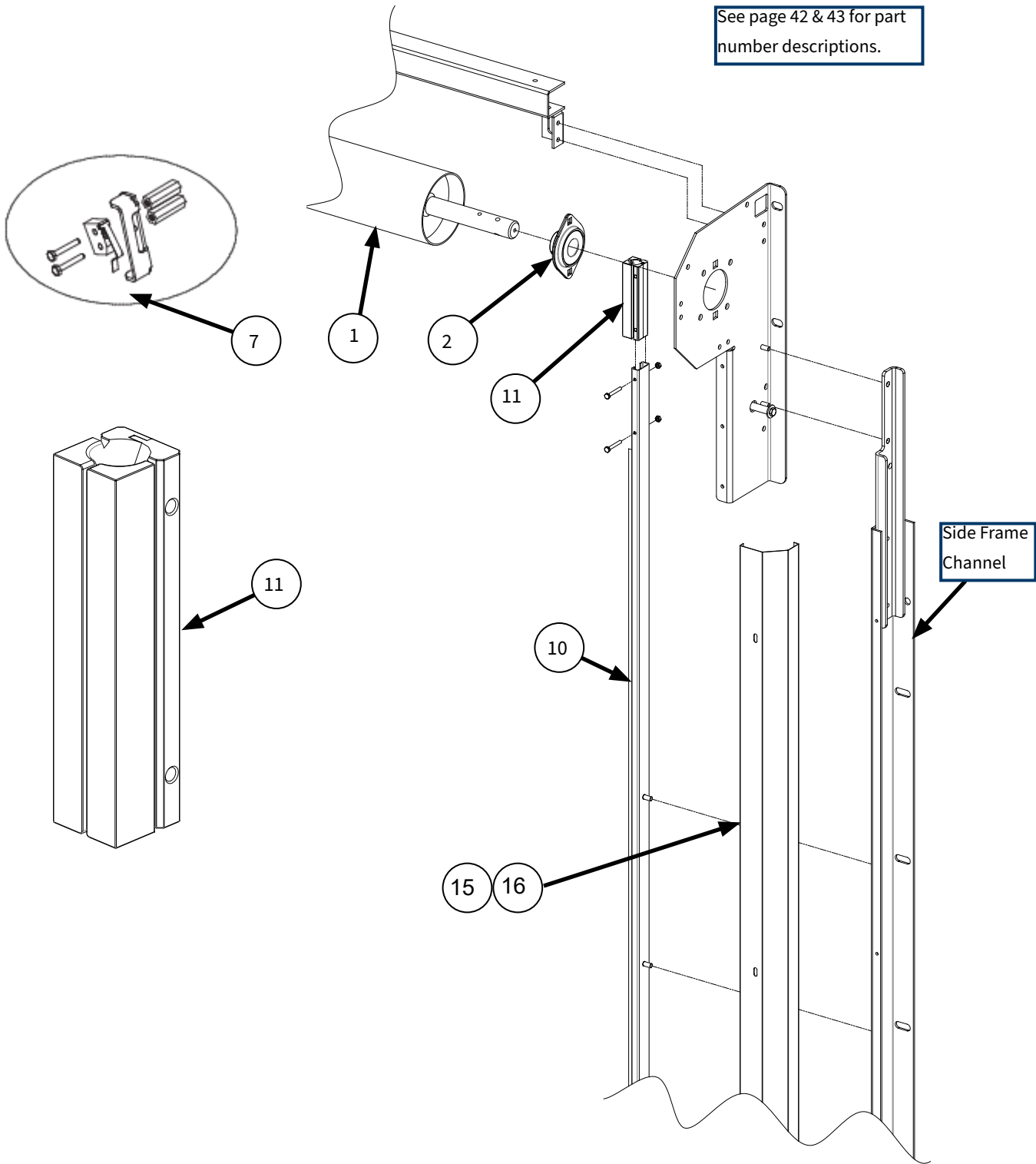
# Service Parts - Motor Side

See Page 40 & 41 for part number descriptions.



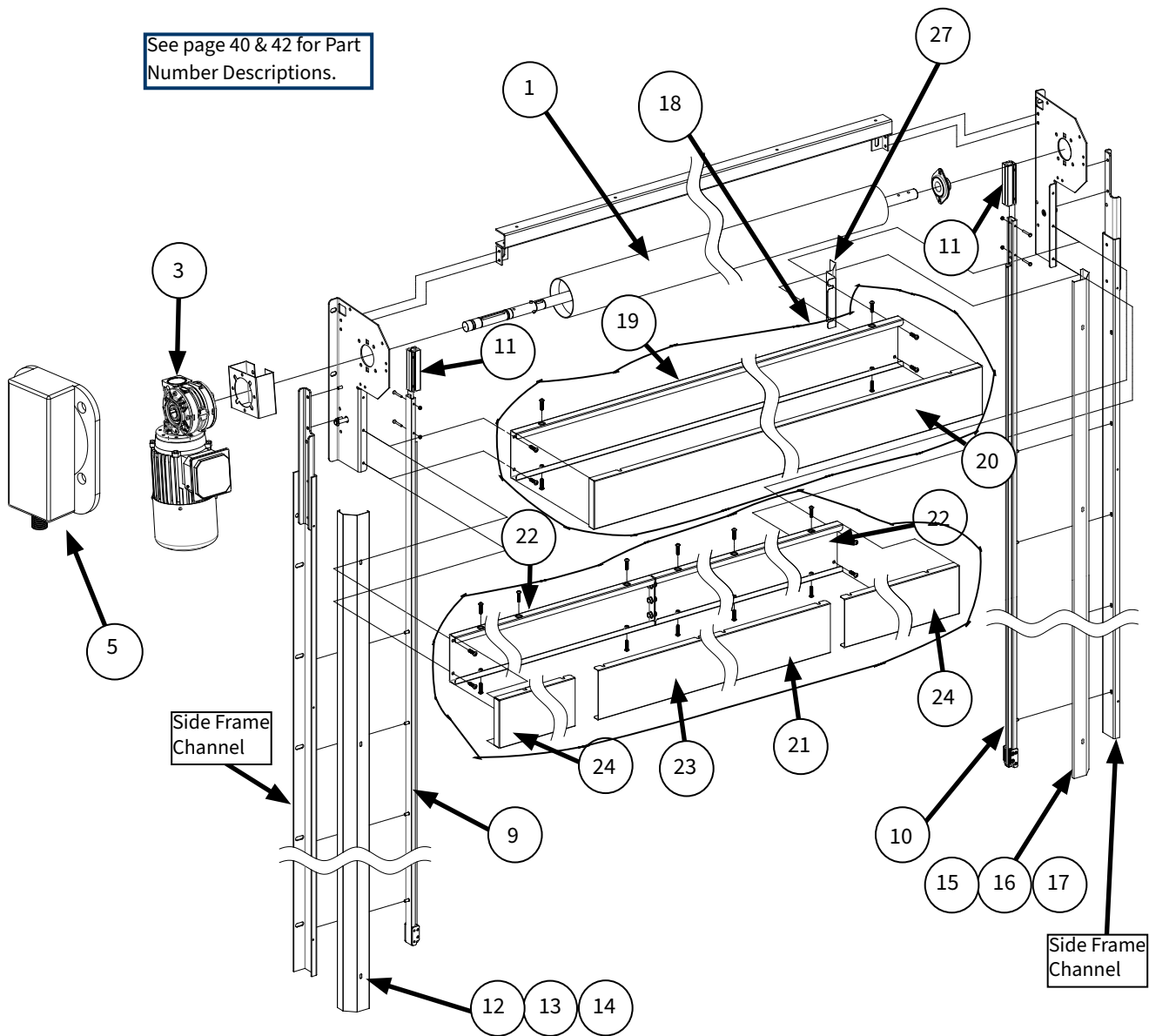
**When ordering parts, specify  
Job Number, Door Number and  
Manufacture Date**

# Service Parts - Idler Side





# Service Parts - Side Frames and Drive Assembly



## NOTE

**NOTE** item 27 side cover is mounted behind item 19, lower spreader base.

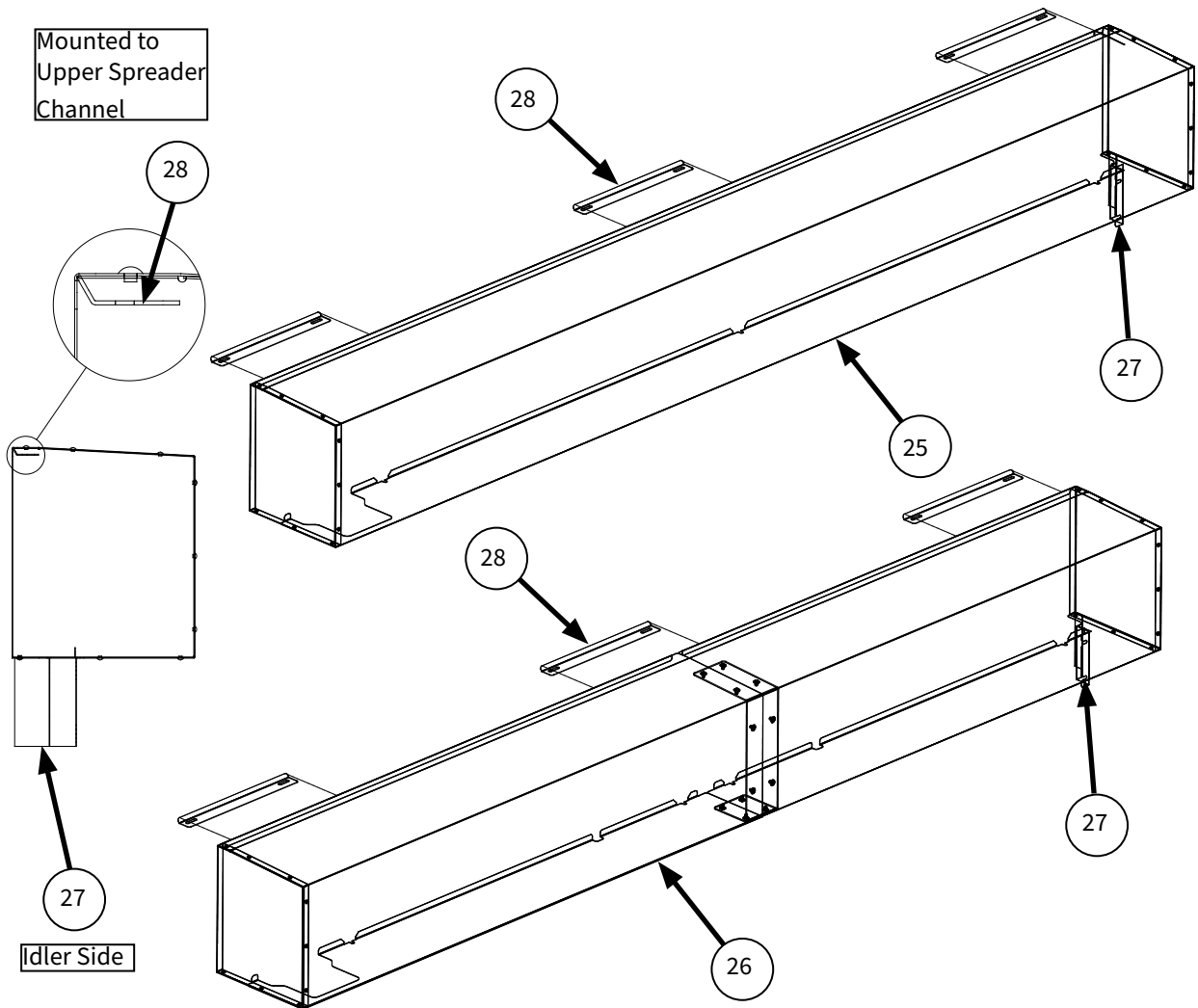
**When ordering parts, specify  
Job Number, Door Number and  
Manufacture Date**



# Service Parts - Shrouds

See Page 42 & 43 for part number descriptions.

Mounted to Upper Spreader Channel



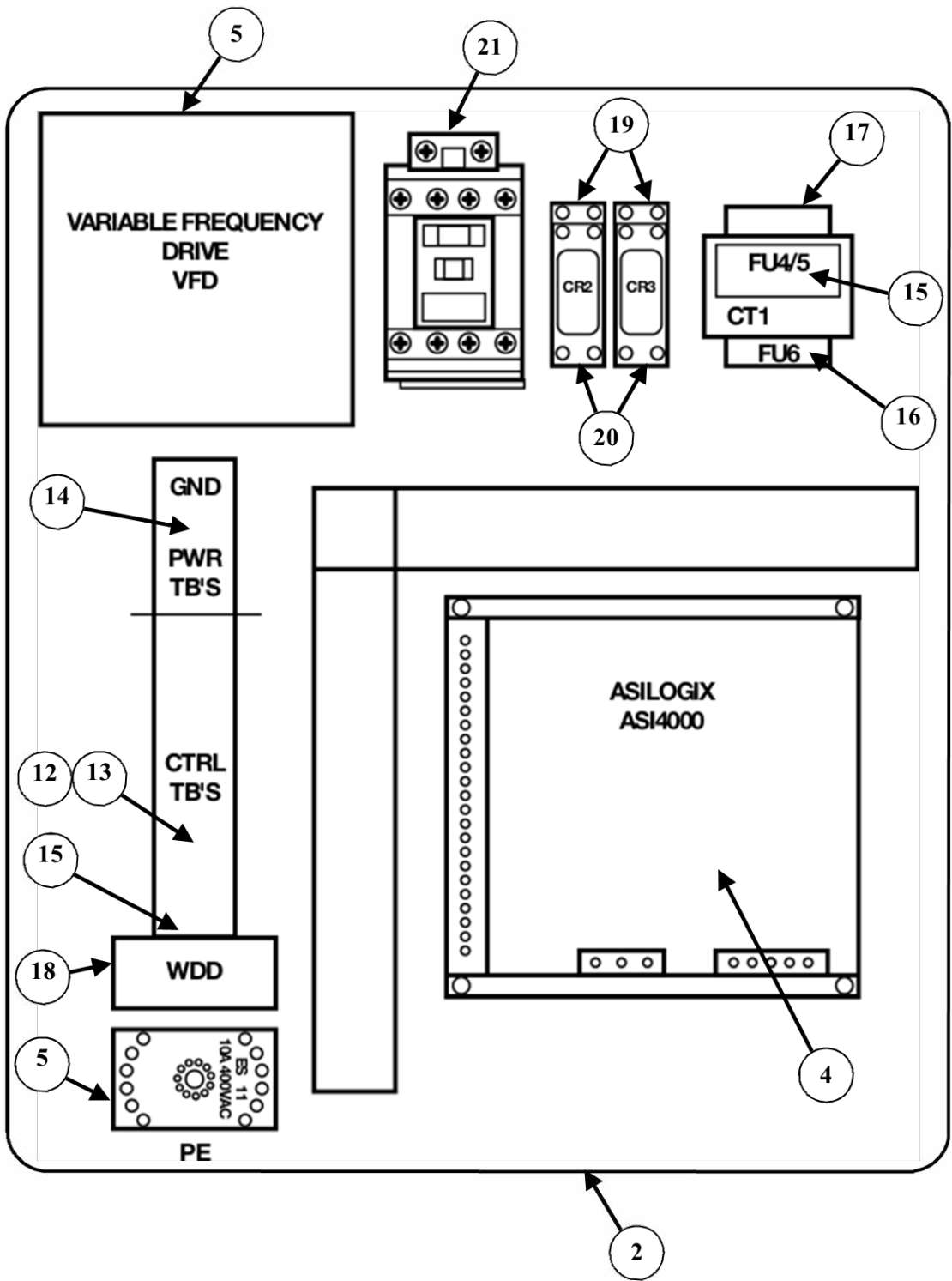
When ordering parts, specify  
Job Number, Door Number and  
Manufacture Date

# Electrical Service Parts List

Item #	Part #	Description	Qty
1	Consult Factory	Enclosure, control box, composite	1
2	Consult Factory	Sub panel, control box, composite	1
3	Consult Factory	Control box complete, 1 HP	1
3	Consult Factory	Control box complete, 2 HP	1
4	23A0421NN	ASILogix II controller board	1
5	23A0416NN	VFD Drive ATV11 1hp motor 110VAC	1
5	23A0417NN	VFD drive ATV31 1hp motor 230VAC	1
5	23A0418NN	VFD drive ATV31 2hp motor 230VAC	1
5	23A0419NN	VFD drive ATV31 1hp motor 460VAC	1
5	23A0420NN	VFD drive ATV31 2hp motor 460VAC	1
6	23A0429NN	Push button, standard	1
7	23A0430NN	Nameplate, push button, standard (one dozen)	1
8	23A0431NN	Emergency stop push button	1
9	23A0432NN	Nameplate, emergency stop, (one dozen nameplates)	1
10	23A0433NN	Selector switch, airlock (optional)	1
11	23A0434NN	Nameplate, airlock, ON/OFF (optional)	1
12	23A0439NN	Terminal block, 35A, red (one dozen)	1
13	23A0438NN	Terminal block, 35A, black (one dozen)	1
14	23A0437NN	Terminal block, ground (one dozen)	1
15	23A0422NN	Fuse 0.5 Amp 600V class CC - (one dozen)	1
16	23A0423NN	Fuse 2.0 Amp 250V class M - (one dozen)	1
17	Consult Factory	Transformer, step-down, 208/230/460 50VA	1
17	Consult Factory	Transformer, step-down, 208/230/460 100VA (doors w/optional relays)	1
17	Consult Factory	Transformer, step-down, 110V 100VA	1
18	23A0426NN	Wireless door detector receiver (DIN rail mount-no socket)	1
19	23A0427NN	Relay 24VAC - DPDT (optional, for special controls)	1
20	23A0428NN	Socket, 24VAC- DPDT (optional, for special controls)	1
21	23A0435NN	Contact, 2NO, 2NC (for opt. battery backup)	1
22	23A0409NN	Photoeye set (Includes transmitter, receiver, amplifier)	1

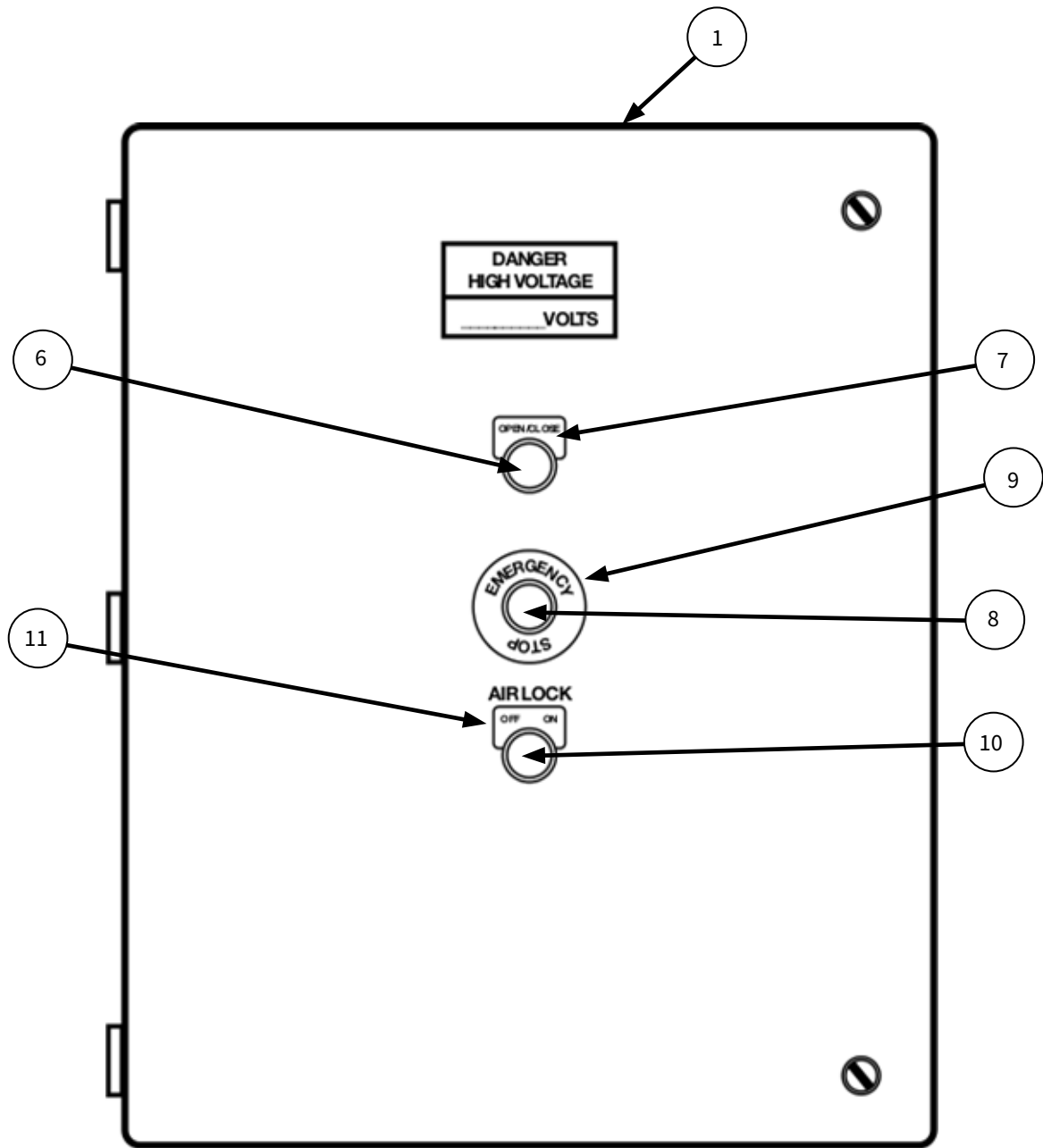
**When ordering parts, specify  
Job Number, Door Number and  
Manufacture Date**

See page 47 for part number descriptions.



When ordering parts, specify  
Job Number, Door Number and  
Manufacture Date

See page 47 for part number descriptions.



When ordering parts, specify  
Job Number, Door Number and  
Manufacture Date



## ADDENDUM:

### 515 Shroud Installation Guide

INSTALLATION

This bulletin is an addition to the standard owner's manual for the 515 Fabric Roll-Up Doors. All warranties, safety practices and warning descriptions pertaining to this door can be found in on page 5, and apply to procedures and instructions contained in this bulletin.

# Shroud Installation Guide

1. If the lower spreader assembly is not currently attached to the header assembly this should be attached prior to installing the header on the building wall.
2. To do so follow these steps:
  - a. Remove lower spreader front cover.
  - b. Locate small shroud side cover, part #13B1720.
  - c. Using the provided hardware (typically attached to inside lower spread assembly) attach the lower cover bracket to the header bearing plate.
  - d. On the idler side prior to securing the spreader mount the shroud side cover.
  - e. Re-attach the lower spreader front cover. The lower screws can be tighten completely but the upper screws should be loose since they will also be used to secure the shroud assembly.
3. The shroud assembly may be a two piece unit if so attach the shroud assembly section with the splice plate first.
4. Secure the upper ½" lip of the shroud assembly to the cross member mounting clips.
5. Pivot and slide the shroud in place and secure to the lower spreaders upper screws. Tighten these screws completely when everything is in place.
6. Repeat this for the second section of the shroud if applicable.
7. Screw the shroud sections to the center splice plate, if applicable.
8. On wider units it may be necessary to screw from the top of the shroud into the cross beam. Typically this is done on 18" centers with self tapping screws found in loose parts.



**OPEN UP TO WHAT'S POSSIBLE**



**asidoors.com**