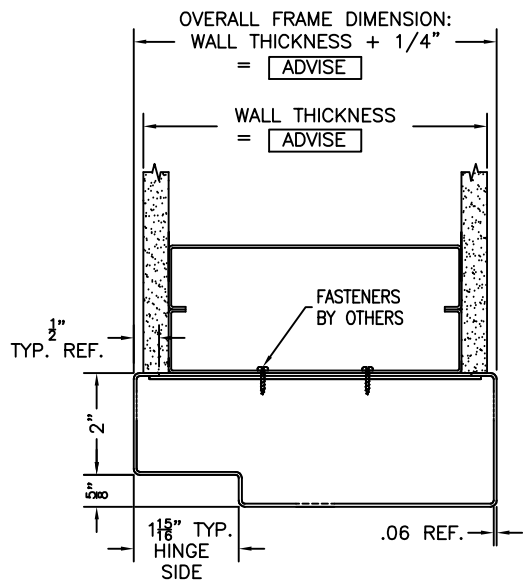
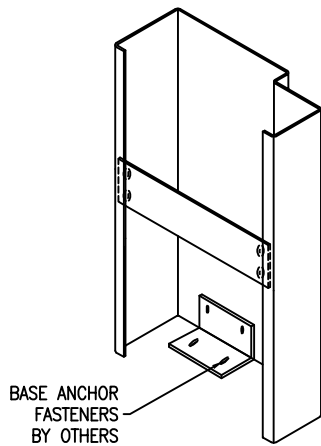


FRAME/WALL/ANCHOR DETAIL

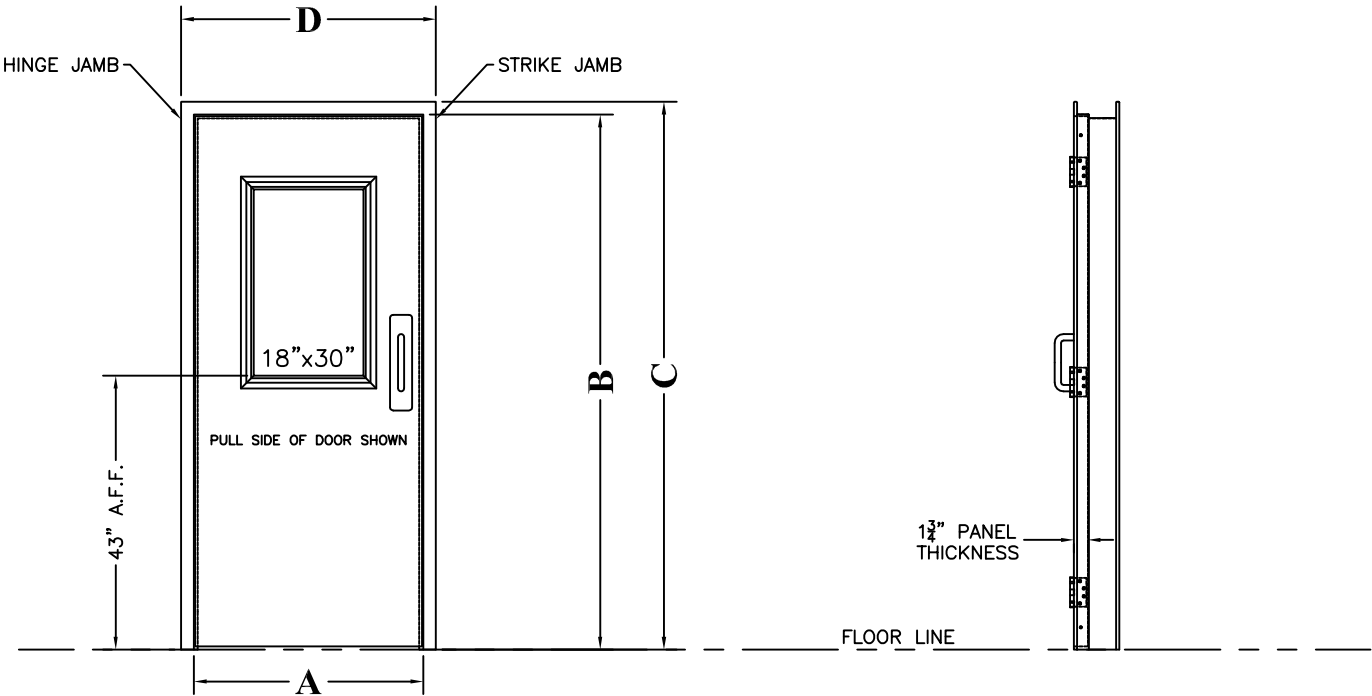
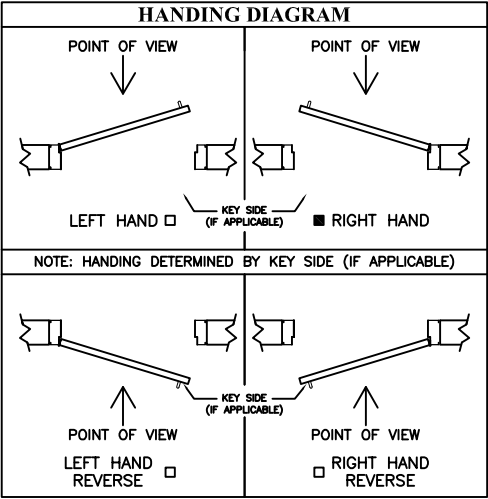
ADVISE



JAMB PROFILE, SLIDE-IN S/S FRAME



FRAME/ANCHOR DETAIL



DOOR DIMENSIONS		
DOOR OPENING WIDTH	A	3'-0"
DOOR OPENING HEIGHT	B	7'-0"
FRAME HEIGHT (B + 2")	C	7'-2"
FRAME WIDTH (A + 4")	D	3'-4"

FEATURES

PANEL TYPE: ■ 16GA. 304 #4 STAINLESS STEEL	
FRAME MATERIAL: ■ 16GA. 304 #4 STAINLESS STEEL	FRAME TYPE: WELDED ■ FLUSH W/ WALL, SINGLE RABBET
45° HOSPITAL STOP: ■ NONE	WALL CONSTRUCTION: ■ NEW STEEL STUD & DRYWALL
ANCHOR STYLE: ■ WELDED BACKBEND STRAP (BSA)	PANEL CAPPING: ■ NONE
WINDOW TYPE: 304 #4 S/S FRAME ■ SINGLE PANE W/ SLOPED FRAME	GLASS TYPE: ■ CLEAR TEMPERED GLASS
KICKPLATE - PULL SIDE: ■ NONE	KICK PLATE - PUSH SIDE: ■ NONE

STANDARD & LOOSE PARTS ITEMS

* PROVIDE

SPECIAL NOTES

TAG DOOR(S) AS: *****ADVISE*****

*****ADVISE*****

- * DOOR TAG:
- * SWING: RH (SHOWN) OR RHR OR LH OR LHR (USE HANDING DIAGRAM)
- * WALL THICKNESS:
- * WALL CONSTRUCTION:
- * FRAME STYLE: WELDED (SHOWN) OR KNOCKDOWN
- * ANCHOR STYLE:
- * JAMB PROFILE: SLIDE IN/FLUSH (SHOWN) OR A WRAPPING WALL

APPROVAL DRAWING



5848 North 95th Court
Milwaukee, WI 53225
1-800-558-7068
www.asidoors.com

APPROVALS

FABRICATION CAN PROCEED ACCORDING TO THE SPECIFICATION SHOWN EXCEPT AS NOTED.

BY _____ DATE _____

ASI JOB NUMBER:
CUSTOMER ORDER NUMBER:
SOLD TO:
END USER:

QUANTITY OF DOORS:
DOOR MODEL NO: 220SS
DOOR ASSEMBLY NO: SLSW
ELECTRICAL DRAWING NO:

TITLE
SINGLE SWING – MANUAL DOOR

DRAWN BY KS	DATE	SHEET 1 OF	DRAWING NO.	REV.
----------------	------	---------------	-------------	------