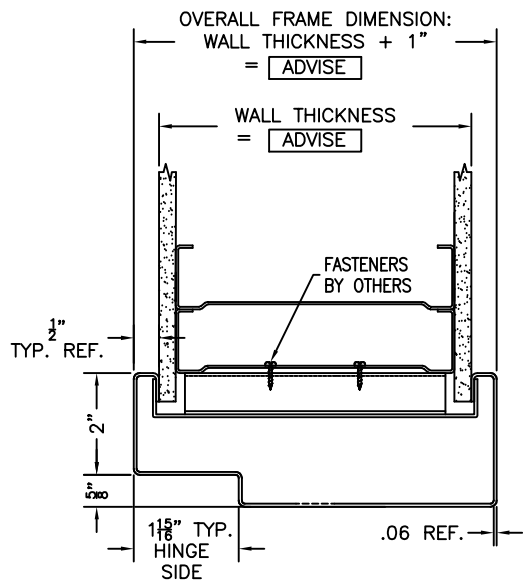


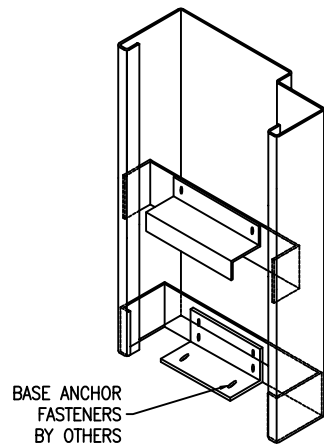
FRAME/WALL/ANCHOR DETAIL

ADVISE



JAMB PROFILE, WRAPPING S/S FRAME

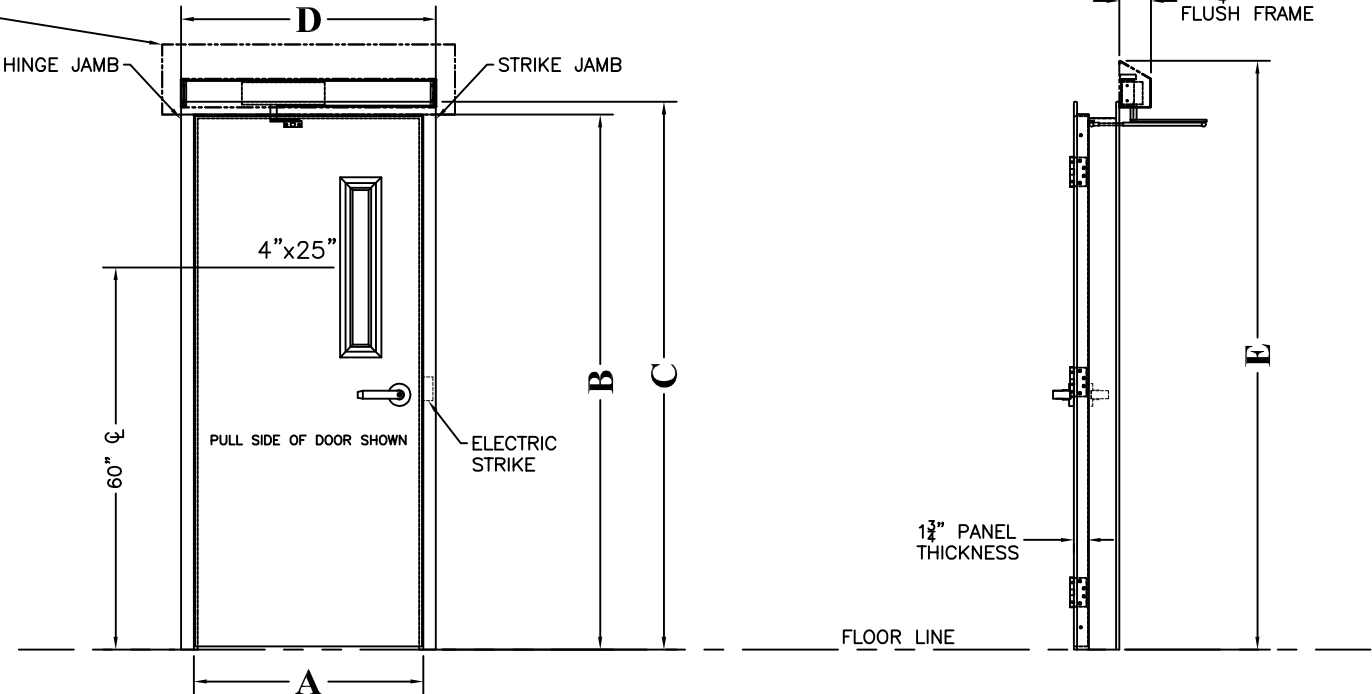
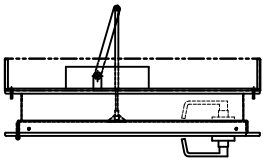
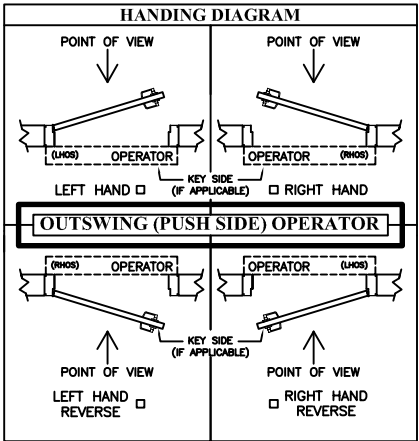
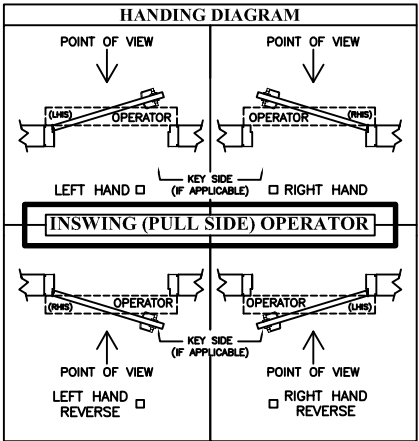
NOTE: WALL MUST BE REINFORCED. OPERATOR IS MOUNTED DIRECTLY TO WALL. 7GA PLATE, 8" HIGH STARTING AT TOP OF ROUGH OPENING EXTENDING TO (1) STUD PAST EACH SIDE OF FRAME. (MIN. REQUIREMENT, BY CUSTOMER)



FRAME/ANCHOR DETAIL

NOTE: IF INSWING OPERATOR NEEDED SHROUD HEIGHT = B + 9 1/2"

ADVISE



DOOR DIMENSIONS

DOOR OPENING WIDTH	A	3'-0"
DOOR OPENING HEIGHT	B	7'-0"
FRAME HEIGHT (B + 2")	C	7'-2"
FRAME WIDTH (A + 4")	D	3'-4"
SHROUD HEIGHT (B + 8 1/8")	E	7'-8 1/8"

FEATURES

PANEL TYPE: U.L. FIRE RATED	FRAME TYPE: WELDED
16GA. 304 #4 STAINLESS STEEL	WRAPPING WALL, SINGLE RABBET
FRAME MATERIAL: U.L. FIRE RATED	WALL CONSTRUCTION:
16GA. 304 #4 STAINLESS STEEL	NEW STEEL STUD & DRYWALL - FIRE RATED
45' HOSPITAL STOP:	PANEL CAPPING:
NONE	NONE
ANCHOR STYLE: U.L. FIRE RATED	GLASS TYPE: U.L. FIRE RATED
NO MARK W/BASE (NMSSA-DR)	FIRELITE PLUS
WINDOW TYPE: 304 #4 S/S FRAME	KICK PLATE - PULL SIDE: U.L. FIRE RATED
SINGLE PANE W/ SLOPED FRAME	KICK PLATE - PUSH SIDE: U.L. FIRE RATED
KICKPLATE - PULL SIDE: U.L. FIRE RATED	NONE
NONE	

POWER FEATURES

POWER OPERATOR:	OPERATOR SHROUD:
T-TYPE - OUTSWING - 115 VAC, 1Ø	30', 304 #4 S/S, OUTSWING, FLUSH FRAME
ACTIVATION:	
(X125) () Touchless Switch, MS11, Single Gang, Loose (23A0488)	

STANDARD & LOOSE PARTS ITEMS

* PROVIDE

SPECIAL NOTES

TAG DOOR(S) AS: *****ADVISE*****

*** FEATURES & HARDWARE SUBJECT TO U.L. APPROVAL BEFORE MANUFACTURING MAY PROCEED ***

*****ADVISE*****

- * DOOR TAG:
- * SWING: RH (SHOWN) OR RHR OR LH OR LHR (USE HANDING DIAGRAM)
- * POWER HANDING:
- * WALL THICKNESS:
- * WALL CONSTRUCTION:
- * FRAME STYLE: WELDED (SHOWN) OR KNOCKDOWN
- * ANCHOR STYLE:
- * JAMB PROFILE: SLIDE IN/FLUSH (SHOWN) OR A WRAPPING WALL

APPROVAL DRAWING



5848 North 95th Court
Milwaukee, WI 53225
1-800-558-7068
www.asidoors.com

APPROVALS

FABRICATION CAN PROCEED ACCORDING TO THE SPECIFICATION SHOWN EXCEPT AS NOTED.

BY _____ DATE _____

ASI JOB NUMBER:
CUSTOMER ORDER NUMBER:
SOLD TO:
END USER:

QUANTITY OF DOORS:
DOOR MODEL NO: 225SSFR
DOOR ASSEMBLY NO: SSWF
ELECTRICAL DRAWING NO: 18D292

TITLE SINGLE SWING - POWERED DOOR 90 MINUTE FIRE RATED PANEL				
DRAWN BY KS	DATE	SHEET 1 OF	DRAWING NO.	REV.