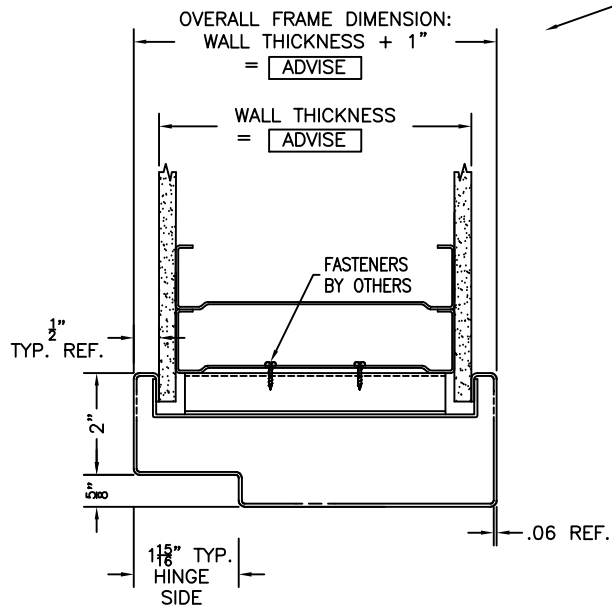
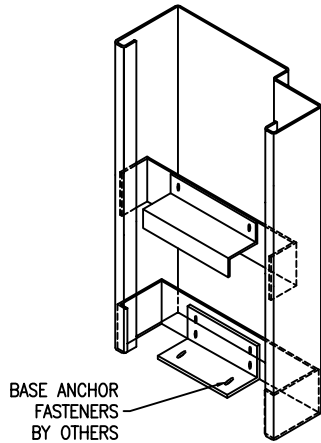
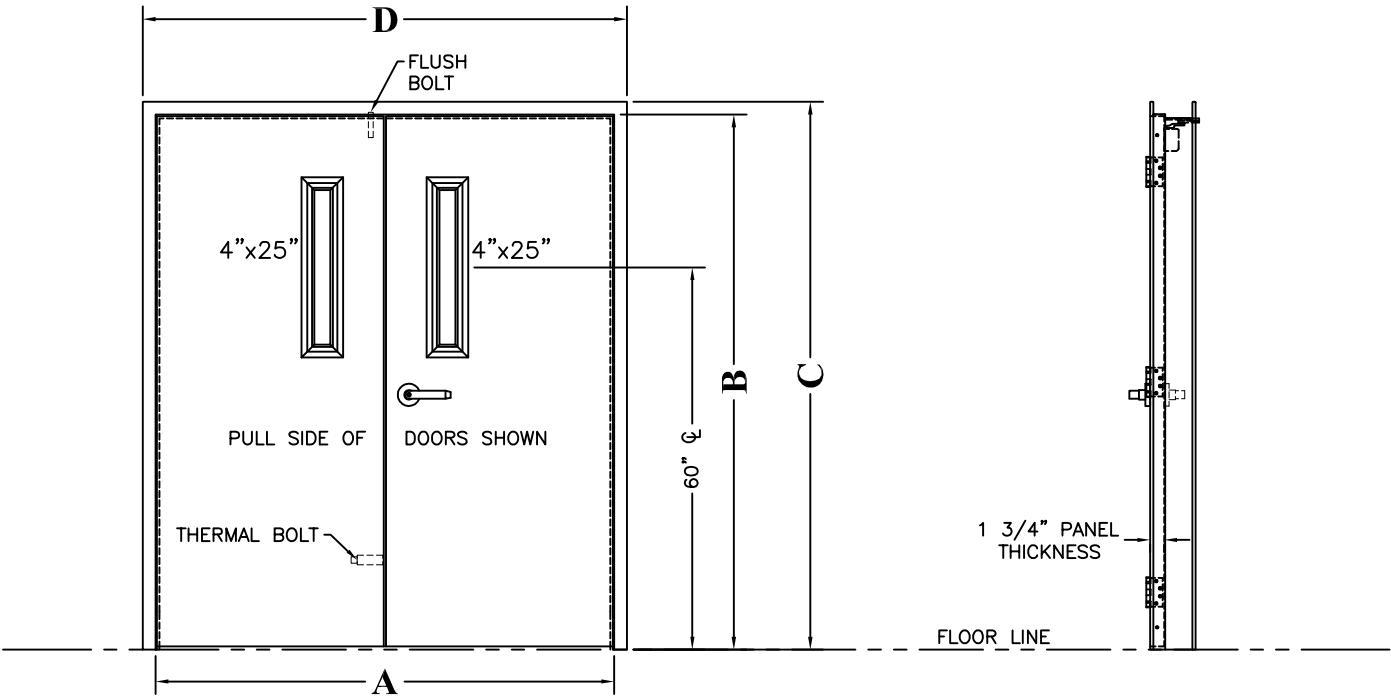
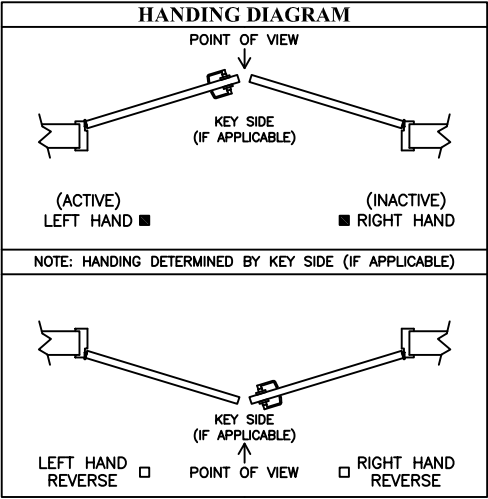
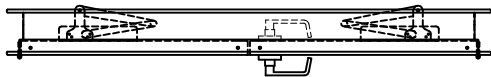


FRAME/WALL/ANCHOR DETAIL

ADVISE



JAMB PROFILE, WRAPPING S/S FRAME



FRAME/ANCHOR DETAIL

FEATURES

PANEL TYPE: U.L. FIRE RATED ■ 16GA. 304 #4 STAINLESS STEEL	
FRAME MATERIAL: U.L. FIRE RATED ■ 16GA. 304 #4 STAINLESS STEEL	FRAME TYPE: WELDED ■ WRAPPING WALL, SINGLE RABBET
45° HOSPITAL STOP: ■ NONE	WALL CONSTRUCTION: ■ NEW STEEL STUD & DRYWALL – FIRE RATED
ANCHOR STYLE: U.L. FIRE RATED ■ NO MARK W/BASE (NMSSA-DR)	PANEL CAPPING: ■ NONE
WINDOW TYPE: 304 #4 S/S FRAME ■ SINGLE PANE W/ SLOPED FRAME	GLASS TYPE: U.L. FIRE RATED ■ FIRELITE PLUS
KICKPLATE – PULL SIDE: U.L. FIRE RATED ■ NONE	KICK PLATE – PUSH SIDE: U.L. FIRE RATED ■ NONE

STANDARD & LOOSE PARTS ITEMS

\* PROVIDE

SPECIAL NOTES

TAG DOOR(S) AS: **\*\*\*ADVISE\*\*\***

\*\*\* FEATURES & HARDWARE SUBJECT TO U.L. APPROVAL BEFORE MANUFACTURING MAY PROCEED \*\*\*

\*\*\*\*\*ADVISE\*\*\*\*\*

- \* DOOR TAG:
- \* SWING: RH/LH (SHOWN) OR RHR/LHR (USE HANDING DIAGRAM)
- \* ACTIVE LEAF: RH OR LH (SHOWN) OR BOTH OR RHR OR LHR OR BOTH
- \* WALL THICKNESS:
- \* WALL CONSTRUCTION:
- \* FRAME STYLE: WELDED (SHOWN) OR KNOCKDOWN
- \* ANCHOR STYLE:
- \* JAMB PROFILE: SLIDE IN/FLUSH (SHOWN) OR A WRAPPING WALL

APPROVAL DRAWING



5848 North 95th Court  
Milwaukee, WI 53225  
1-800-558-7068  
www.asidoors.com

APPROVALS

FABRICATION CAN PROCEED ACCORDING TO THE SPECIFICATION SHOWN EXCEPT AS NOTED.

BY \_\_\_\_\_ DATE \_\_\_\_\_

ASI JOB NUMBER:  
CUSTOMER ORDER NUMBER:  
SOLD TO:  
END USER:

QUANTITY OF DOORS:  
DOOR MODEL NO: 230SSFR  
DOOR ASSEMBLY NO: PSWF  
ELECTRICAL DRAWING NO:

TITLE PAIRED SWING – MANUAL DOOR 90 MINUTE FIRE RATED PANEL				
DRAWN BY KS	DATE	SHEET 1 OF	DRAWING NO.	REV.