

ADVISE

FEATURES

VOLTAGE:
☐ 230 3ø 60HZ ☐ 460 3ø 60 HZ

VISION SLATS: (QTY. 4)
☒ POLYCARBONATE - FULL WIDTH

BARREL & OPERATOR SHROUD:
☒ YES

REVERSING EDGE:
☒ STD WIRELESS REVERSING EDGE (23B155)

PRE-ANNOUNCE TO CLOSE:
☒ NO

EXTENDED CABLE PACKAGE:
☒ NO

REVERSING DEVICE:
☒ STD DUAL PHOTO EYES

ACTIVATION DEVICES

- (X000) () Loop Detector (only)
- (X000) () Loop Detector, W/ Wire & Sealant
- (X027) () Motion Sensor ASI/F (23A284)
- (X080) () Motion Sensor Program Remote ASI/B, Loose (23A285)
- (X181) () Radio Control, 1-Channel Receiver (23A0510)
- (X182) () Radio Control, 1-Channel Transmitter W/Clip (23A0511)
- (X184) () Radio Control, 2-Channel Transmitter W/Clip (23A0512)
- (X100) () Pull Cord, Unheated (24C507F1)
- (X045) () Single Button Station, Unheated (24B029F1)
- (X047) () 3-Button Station, Open/Close/E-Stop (24A001)
- (X048) () 3-Button Station, Open/Close/E-Stop W/Key (23A245)

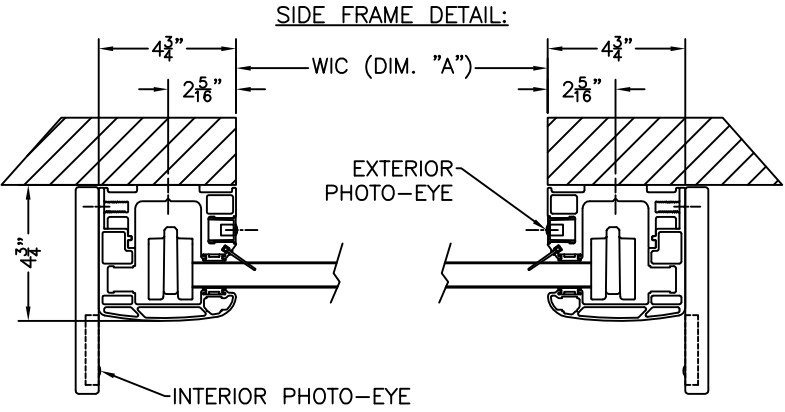
SPECIAL NOTES

TAG DOOR(S) AS: *****ADVISE*****

NOTE: FLOOR LEVELNESS & FLATNESS TO BE WITHIN 3/8" OVER WIDTH IN CLEAR FOR PROPER SEAL

MOTOR DATA 3.25 HP (2.5 KW)		
VOLT/PHASE	FLA	
460/3	7.5 AMPS	
230/3	12.5 AMPS	

DOOR DIMENSIONS			
FINISHED OPENING WIDTH	A	12'-0"	
FINISHED OPENING HEIGHT	B	12'-0"	
B + 28"	C	14'-4"	
A + 21"	D	13'-9"	
A + 22 1/4"	E	13'-10 1/4"	
B + 28 1/2"	F	14'-4 1/2"	



***** **ADVISE** *****

* DOOR TAG:
* OPERATOR LOCATION: RIGHT HAND (SHOWN), LEFT IS OPPOSITE
* VOLTAGE: 230 OR 460 VOLTS, 3 PHASE

APPROVAL DRAWING



5848 North 95th Court
Milwaukee, WI 53225
1-800-558-7068
www.asidoors.com

APPROVALS

FABRICATION CAN PROCEED ACCORDING TO THE SPECIFICATION SHOWN EXCEPT AS NOTED.

BY _____ DATE _____

ASI JOB NUMBER: _____

CUSTOMER ORDER NUMBER: _____

SOLD TO: _____

END USER: _____

QUANTITY OF DOORS: _____

DOOR MODEL NO: 209-D

DOOR ASSEMBLY NO: 91B0018

ELECTRICAL DRAWING NO: _____

TITLE
APEX DURA ALUMINUM ROLLUP DOOR,
RIGHT HAND DRIVE

DRAWN BY	DATE	SHEET 1 OF	DRAWING NO.	REV.
----------	------	---------------	-------------	------