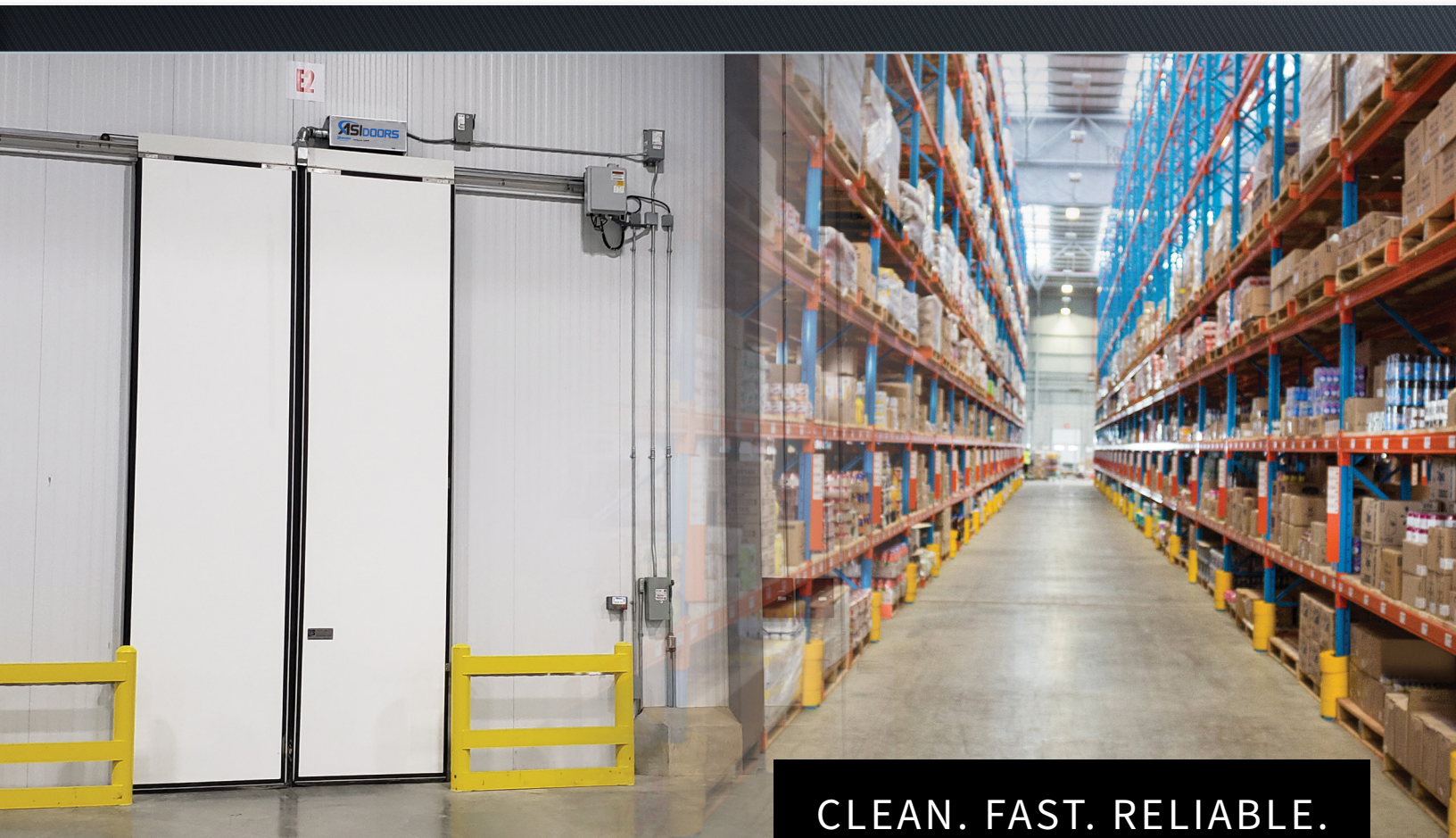




High Performance Doors



CLEAN. FAST. RELIABLE.

**COLD STORAGE DOORS**

# DESIGNED TO MEET THE CHALLENGES OF REFRIGERATED ENVIRONMENTS

The primary challenge for dry, refrigerated, and frozen food distributors is control – temperature control, traffic control, and cost control. With these concerns, ASI Doors has a door to meet your challenges.



Food safety is the number one priority for food and beverage facilities. The ability to move product efficiently through a facility limits the exposure to possible contaminants and spoilage.

High-speed doors allow quick access to all areas of the facility. The speed of operation helps minimize air exchange between two areas. When closed, the tight perimeter seals prevent dust, dirt, and insects from entering storage and processing areas. Combining this with corrosion resistant hardware and controls, ASI Doors will meet the strictest sanitary requirements.

We provide door solutions that reduce energy and maintenance costs, increase productivity, improve material handling, maximize quality control and enhance worker safety.

## WHY ASI DOORS FOR COLD STORAGE?

- Reduced Energy Usage
- Lower Maintenance Costs
- Improved Productivity
- Maximized Quality Control
- Enhanced Safety

## COMMON COLD STORAGE APPLICATIONS

- Refrigerated Warehousing
- Food Processing
- Grocery Distribution
- Dairy
- Seafood
- Bakery
- Pharmaceutical
- Meat and Poultry

*Don't see your application?*

*We Can Help!*

*Contact us: [sales@asidoors.com](mailto:sales@asidoors.com)*



OPENING  
SPEEDS  
UP TO 100"  
PER SECOND

# SLIDING DOORS



MODEL XP 2200 ISO-FLEX



MODEL XP 2700 ISO-FLEX

## ISO-FLEX MODELS

Durability and cost savings are engineered into every aspect of ASI Doors' newest, patented, sliding cold storage door. With its damage resistant panel construction and high-speed operation, the ISO-Flex, is designed to reduce downtime and repair costs, while increasing energy savings and productivity. The ISO-Flex is the "next generation" of high-performance cold storage doors.

- 4" thick, R-17, thermoplastic panel construction
- Industry exclusive, corrosion resistant aluminum header and rail assembly
- Belt driven system provides smooth and quiet operation
- IP65 washdown rated motor and encoder
- Panel mounted sealing system



[View Our ISO-Flex Series Door Video](#)

## FEATURES



### Digital Display

Self-diagnostic digital display control interface.



### Standard Wall Track

Improves operation and reduces downtime.



MODEL XP 2000



MODEL XP 2500

## XP MODELS

Combining high speed operation and energy efficiency with the most versatile and cost-effective features, the XP cooler and freezer doors are designed to meet the needs of various cold storage applications. The XP series doors' quick operating speeds reduce air exchange between rooms which help maintain various temperatures and provide a low-maintenance, lower cost option.

- 4" thick, R-30, painted white 26ga. galvanized steel panel construction
- Industry exclusive, corrosion resistant aluminum header and rail assembly
- Belt driven system provides smooth and quiet operation
- IP65 washdown rated motor and encoder
- Four sided heat in panels for freezer applications

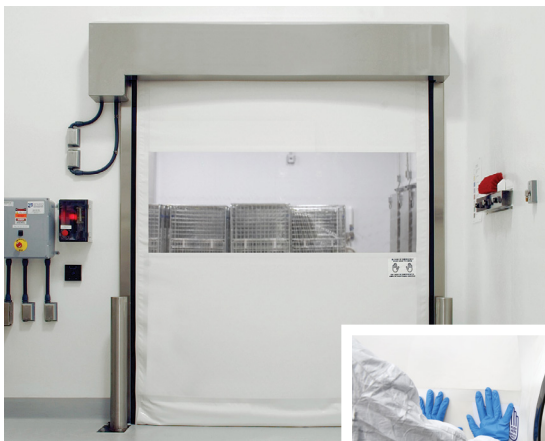


### Heated Threshold Blower (Optional)

Reduces frost and ice buildup on seals and threshold.

# FABRIC ROLL-UP DOORS

High-performance fabric roll-up doors are ideal for applications with tight space constraints in high-cycle traffic areas. With speeds of up to 100" per second, they help minimize air exchange and increase productivity within your facility. With multiple safety features, like the soft bottom edges and auto reset feature, ASI Doors fabric roll-up doors have you covered.



Manual Release (Optional)

## MODEL 415

- Multi-filament PVC coated curtain material
- Breakaway curtain with automatic reset from either direction
- 28" high, full width, clear PVC vision panel
- Opening speeds up to 50" per second
- 304 #4 stainless steel, low profile side guides and one-piece shroud and motor cover
- For interior applications with moderate traffic in clean environments
- Washdown rated



## MODEL 515

- Multi-filament PVC coated curtain material, FDA compliant
- Breakaway curtain with automatic reset from either direction
- Low profile side guides with heavy duty track system
- Soft bottom edge – no bottom bar required
- Washdown rated wireless safety reversing edge
- For interior applications with moderate traffic
- Opening speeds up to 50" per second

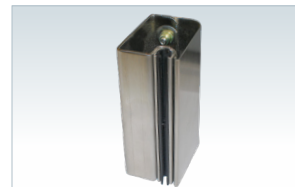
## FEATURES



Soft Bottom Edge



Blower Assembly  
(Optional)



Low Profile Side Guides





### MODEL 615

- Multi-filament PVC coated curtain material
- Breakaway curtain with automatic reset from either direction
- Structural galvanized steel low profile side guides
- For interior/exterior applications with heavy traffic
- Soft bottom edge – no bottom bar required
- Washdown rated wireless safety reversing edge
- Opening speeds up to 100" per second
- **OPTIONAL** heated or non-heated blower system



### MODEL 615F

- Soft bottom edge – no bottom bar required
- Thermal breaks with heat tape incorporated into side guides
- Standard full horizontal heated lintel seal
- For interior cooler and freezer openings
- Opening speeds up to 100" per second
- **OPTIONAL** insulated PVC coated material
- **OPTIONAL** heated or non-heated blower system



**Breakaway Curtain  
with Auto Reset**

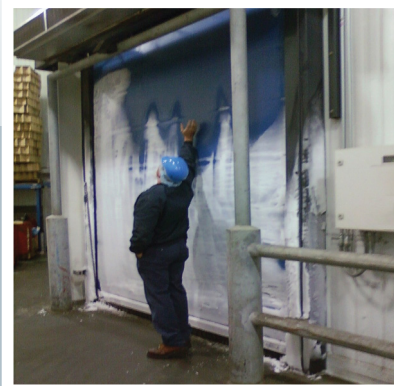


**Safety Photo Eye**



### AVOID RISKY FROST & ICE BUILDUP

Doors with poor insulation can create dangerous working conditions due to slippery ice buildup.



# AIR DOORS



**MAXIMIZE** ENERGY EFFICIENCY.  
**MINIMIZE** REFRIGERATION LOSS.

Air Door technology has revolutionized the cold storage industry. If you're looking to maximize your energy efficiency and minimize refrigeration loss in high traffic areas, ASI Doors has the solution. Combine air doors with other ASI Doors and you have an opening that reduces door damage, costly downtime, and requires less maintenance.



## MODEL 715

- Integrate with manual/power sliding insulated cooler/freezer, or high speed fabric roll-up doors
- Automatic activation devices for secondary doors
- Galvanized steel construction
- **OPTIONAL** Insulated vestibules
- **OPTIONAL** PVC strips
- **OPTIONAL** Stainless steel construction

## FEATURES



Optimization Controls



High-Speed Integrated Door (Optional)



Bollards, Through-Guarding & Fencing (Optional)



# INFITTING DOORS

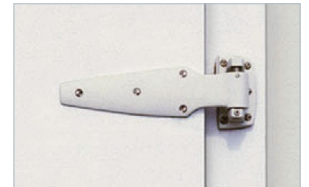


## MODEL 413

Infitting doors are a must for cold storage warehouses. The 413 is a durable, metal clad or stainless steel door for personnel traffic. With our polyurethane insulated core, our panels won't wick up moisture and will retain their high R-value. Combined with our polymer face frames, you will have a door that will last.

- Internal hardware backing – non-corrosive
- Grease-resistant, full perimeter gasket
- Complete “no wood” construction
- 4" thick (R-33) & 6" thick (R-50)
- **OPTIONAL** Freezer panels with heated sweep gaskets

## FEATURES



Cam Lift Hinges



Heavy Duty Latches

## WHICH DOOR TYPE IS BEST FOR YOU?

With over 50 years in the industry, we have the experience to evaluate your application and provide the right solution. Our network of distributors and service providers will ensure you get the life out of the investment you make.

**Let us help you find the right solution for your cold storage needs.**



Visit [asidoors.com](http://asidoors.com)  
to learn more.





**OPEN UP TO WHAT'S POSSIBLE**



## **ABOUT US**

ASI Doors manufactures high performance door systems designed to meet the challenges within today's highly demanding refrigerated, life science, industrial, commercial and security markets. Having the most comprehensive product offering in the industry, finding a solution is just one step away.

Whether separating or controlling environments, increasing productivity or enhancing security, solutions are at the core of every door that we design and build, and have been since 1965.

**asidoors.com**